



Western Michigan University
ScholarWorks at WMU

Legacy Scout Tickets from Pure Oil Company

8-20-2021

MGRRE_PureOilScoutTickets_Smith, G. B._1_unk

MGRRE

Western Michigan University

Follow this and additional works at: <https://scholarworks.wmich.edu/pure>



Part of the Geology Commons

WMU ScholarWorks Citation

MGRRE, "MGRRE_PureOilScoutTickets_Smith, G. B._1_unk" (2021). *Legacy Scout Tickets from Pure Oil Company*. 4589.

<https://scholarworks.wmich.edu/pure/4589>

This Document is brought to you for free and open access via ScholarWorks at WMU. It has been accepted for inclusion in Legacy Scout Tickets from Pure Oil Company by an authorized administrator of ScholarWorks at WMU. See the National Digital Catalogue - Science Base Catalogue for more collections submitted by MGRRE.



MGRRE_PureOilScoutTickets_Smith, G. B._1_unk

API unk

Permit Number unk

Lease Name Smith, G. B.

Well Number 1

County Lapeer

Township 10N

Range 11E

Section 10

2021 DEQ or Pure co_name Caster Bros

Pure Number 5

Latitude 43.304158

Longitude -83.1690945

Feb. 26-1934

THE PURE OIL COMPANY

DATE February 26, 1934 COMPLETION & LOCATION REPORT No. 5
 STATE Michigan COUNTY Lapeer DIST. Burlington SEC. 10 TOWN 10 N RANGE 11 E
 WELL No. 1 (SERIAL No. 5) FARM G. B. Smith ACRES _____
 PREC. G. B. Smith

NAME OF STREAM OR WATERS _____ QUADRANGLE SW-NW-NE
 OPERATOR Drilled by Caster Bros. MAP Burlington Township, Lapeer County

Feet from North Line of Farm

“ “ East “ “ “
 “ “ South “ “ “
 “ “ West “ “ “

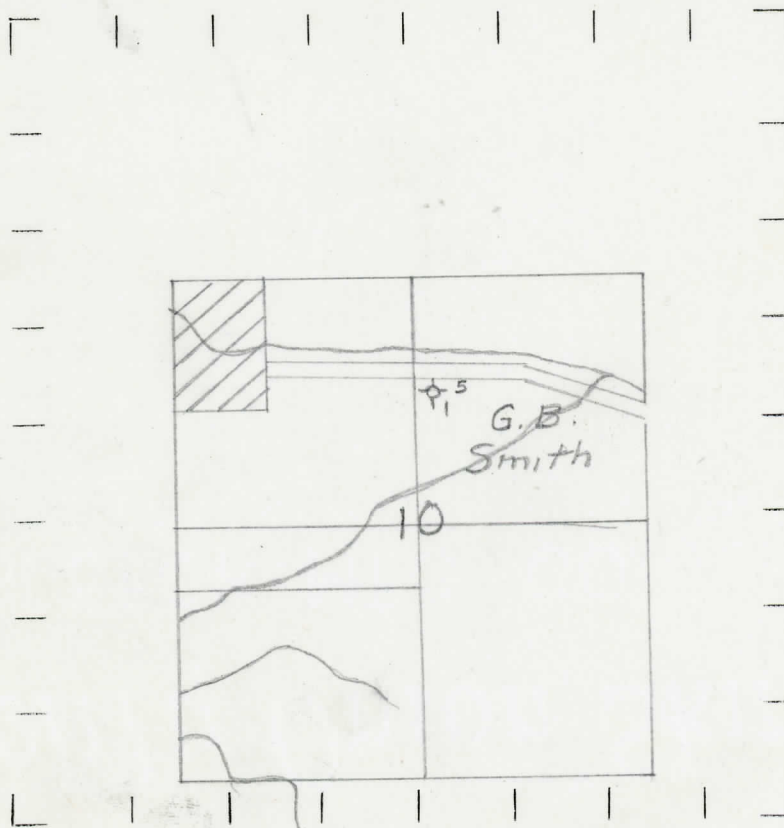
1100 1100 Feet from North Line of Section

2310 2310 “ “ East “ “ “
 “ “ South “ “ “
 “ “ West “ “ “

LEGEND

- LOCATION
- ⊕ RIG
- ⊕ DRILLING
- ⊕ GAS WELL
- OIL WELL
- ⊕ SMALL OIL WELL
- ⊕ DRY HOLE
- ⊕ DRY SHOWING OIL
- ⊕ DRY SHOWING GAS
- ⊕ ABANDONED LOCATION
- ⊕ ABANDONED GAS WELL
- ⊕ ABANDONED OIL WELL

NOTE: Below make tracing from map, (when no map is obtainable make sketch) showing farm, center of section, this location with measurements and also wells, dry holes, or other locations in the vicinity of this location. Make copy to keep for reference and send original to Columbus office.



REMARKS: Water Well Dr 76 Water Well - Drift 96'
D. 175 Total Depth 175'
T.D. 175'

SIGNED

R.L. Yeager
 Superintendent or Foreman.