



Western Michigan University
ScholarWorks at WMU

Legacy Scout Tickets from Pure Oil Company

8-20-2021

MGRRE_PureOilScoutTickets_Branick_2_21087019910000

MGRRE

Western Michigan University

Follow this and additional works at: <https://scholarworks.wmich.edu/pure>



Part of the Geology Commons

WMU ScholarWorks Citation

MGRRE, "MGRRE_PureOilScoutTickets_Branick_2_21087019910000" (2021). *Legacy Scout Tickets from Pure Oil Company*. 4596.

<https://scholarworks.wmich.edu/pure/4596>

This Document is brought to you for free and open access via ScholarWorks at WMU. It has been accepted for inclusion in Legacy Scout Tickets from Pure Oil Company by an authorized administrator of ScholarWorks at WMU. See the National Digital Catalogue - Science Base Catalogue for more collections submitted by MGRRE.



MGRRE_PureOilScoutTickets_Branick_2_21087019910000

API 21087019910000

Permit Number 1991

Lease Name Branick

Well Number 2

County Lapeer

Township 08N

Range 09E

Section 9

2021 DEQ or Pure co_name Berea Oil and Gas Company

Pure Number 17

Latitude 43.11897

Longitude -83.41472

THE PURE OIL COMPANY
COMPLETION RECORD OF WELLS DRILLED BY OTHER OPERATORS

DATE April 26, 1934

LOCATION REPORT

No. 17

STATE Michigan COUNTY Lapeer DIST. Oregon TWP. Oregon SEC. 9 TOWN 8 N RANGE 9 E

WELL No. 2 (SERIAL No. 17) FARM Frances Branick ACRES

NAME OF STREAM OR WATERS QUADRANGLE NW-NW-NW

OPERATOR Berea Oil Company MAP Oregon Township, Lapeer County

330 Feet from North Line of Farm

East " " "

South " " "

330 West " " "

330 Feet from North Line of Section

East " " "

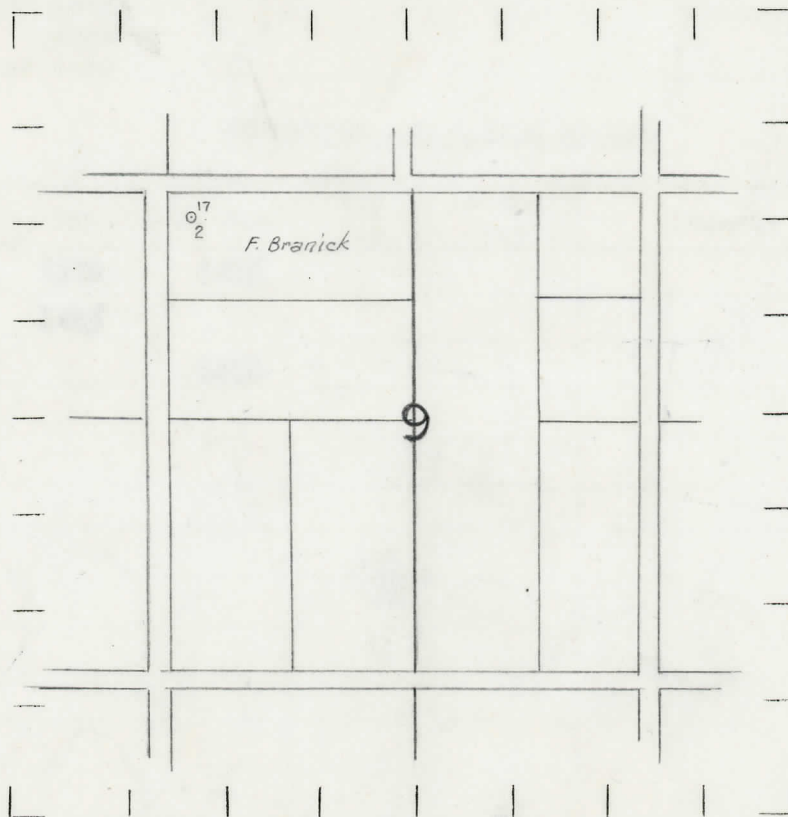
South " " "

330 West " " "

LEGEND

- LOCATION
- ⊙ RIG
- ⊕ DRILLING
- ⊛ GAS WELL
- OIL WELL
- ⊖ SMALL OIL WELL
- ⊠ DRY HOLE
- ⊞ DRY SHOWING OIL
- ⊚ DRY SHOWING GAS
- ⊙ ABANDONED LOCATION
- ⊛ ABANDONED GAS WELL
- ⊖ ABANDONED OIL WELL

NOTE: Below make tracing from map, (when no map is obtainable make sketch) showing farm, center of section, this location with measurements and also wells, dry holes, or other locations in the vicinity of this location. Make copy to keep for reference and send original to Columbus office.



REMARKS:

George Henry Flynn Oil & Gas Company, assignor to Berea Oil Company

SIGNED

O. L. Yeager
Superintendent or Foreman.

Michigan Producing Division

Date **8-8-35** No. **17**
 State **Michigan** County **Lapeer** Dist. **Oregon**
 (Serial No.) Twp. **Oregon** Sec. **9** Twp. **8 N** Rge. **9 E**
 Well No. **2** (County No.) **17** Farm **Frances Branick** Acres
 Operator **Berea Oil Company** Information secured ~~from~~ ^{by} **Scouting Dept.**
 Date well started **4-26-34** Date well completed **7-5-34** Elevation

PRODUCTION RECORD

1st 24 hours natural **Dry hole**
 2nd 24 hours natural
 Date of shot **7-5-35** No. of quarts **20** From to From to
 Date of acid No. of gallons
 1st 24 hours after acid shot
 2nd 24 hours after acid shot

FORMATION AND CASING RECORD

Formation	Top	Bottom	Top Pay	Bottom Pay	Remarks	Casing	
						Size	Set at
Sunbury	1372	1415				8 1/2	136
Berea	1415					5-3/16	1236
Total Depth		1418					

Remarks **Show oil and gas 1417-1418. Show salt water 1418.**