



Western Michigan University
ScholarWorks at WMU

Legacy Scout Tickets from Pure Oil Company

8-20-2021

MGRRE_PureOilScoutTickets_Koehler & Wilson_2_21087021650000

MGRRE

Western Michigan University

Follow this and additional works at: <https://scholarworks.wmich.edu/pure>



Part of the Geology Commons

WMU ScholarWorks Citation

MGRRE, "MGRRE_PureOilScoutTickets_Koehler & Wilson_2_21087021650000" (2021). *Legacy Scout Tickets from Pure Oil Company*. 4605.

<https://scholarworks.wmich.edu/pure/4605>

This Document is brought to you for free and open access via ScholarWorks at WMU. It has been accepted for inclusion in Legacy Scout Tickets from Pure Oil Company by an authorized administrator of ScholarWorks at WMU. See the National Digital Catalogue - Science Base Catalogue for more collections submitted by MGRRE.



MGRRE_PureOilScoutTickets_Koehler & Wilson_2_21087021650000

API 21087021650000

Permit Number 2165

Lease Name Koehler & Wilson

Well Number 2

County Lapeer

Township 08N

Range 09E

Section 4

2021 DEQ or Pure co_name Sowell, Wm. C.

Pure Number 27

Latitude 43.12853

Longitude -83.41988

Form 24 20M 1-14-30 P100-EPCo

DATE 9-13-34
9/13/34

LOCATION REPORT

No. 27

STATE Michigan COUNTY Lapeer DIST. Oregon TWP. Oregon SEC. 4 TOWN 8N RANGE 9E

WELL No. 22 (SERIAL No. 27) FARM Koehler & Wilson ACRES

NAME OF STREAM OR WATERS QUADRANGLE SW-SE-SW
SW-SE-SW

OPERATOR Wm. C. Sowell MAP Oregon Township, Lapeer County
Wm C Sowell Oregon Twp - Lapeer Co.

Feet from North Line of Farm

----- " " East " " "

330 330 " " South " " "

330 330 " " West " " "

Feet from North Line of Section

----- " " East " " "

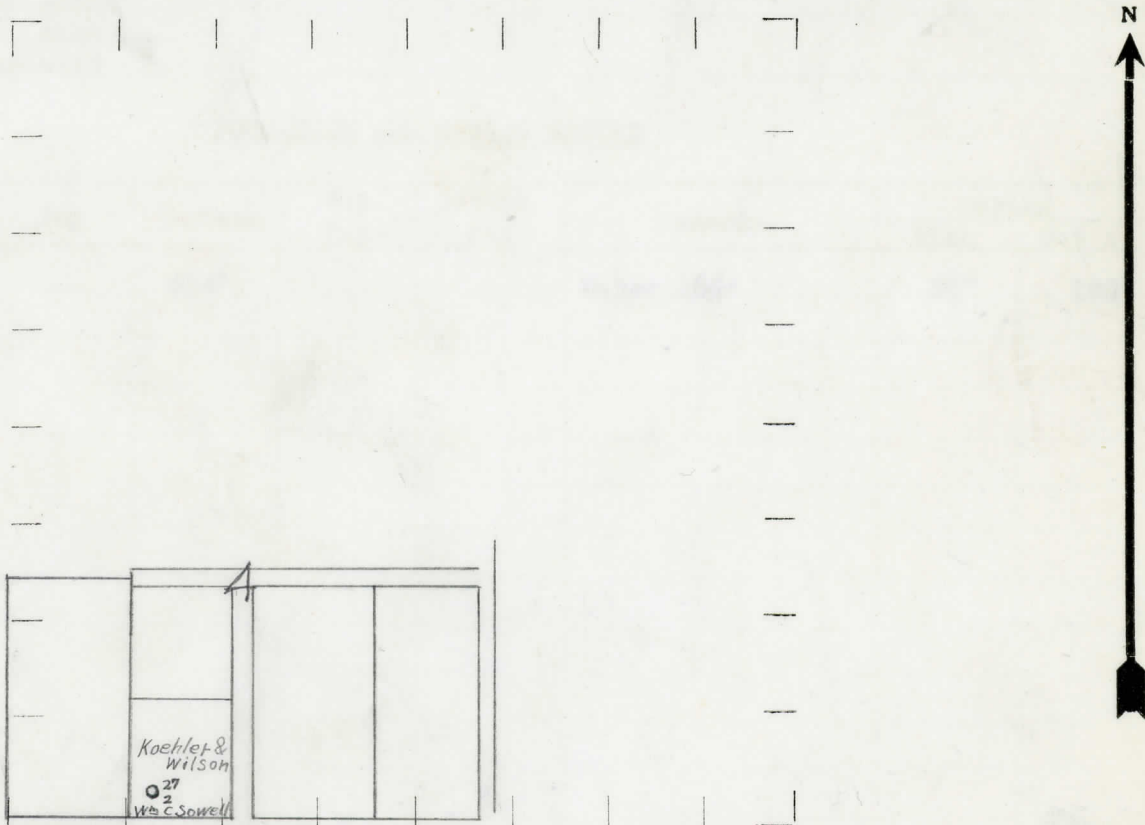
330 330 " " South " " 1/4"

330 330 " " West " " 1/4"

LEGEND

- LOCATION
- ⊙ RIG
- ⊕ DRILLING
- ⊗ GAS WELL
- OIL WELL
- ⬮ SMALL OIL WELL
- ⊠ DRY HOLE
- ⬮ DRY SHOWING OIL
- ⊗ DRY SHOWING GAS
- ⊘ ABANDONED LOCATION
- ⊗ ABANDONED GAS WELL
- ⬮ ABANDONED OIL WELL

NOTE: Below make tracing from map, (when no map is obtainable make sketch) showing farm, center of section, this location with measurements and also wells, dry holes, or other locations in the vicinity of this location. Make copy to keep for reference and send original to Columbus office.



REMARKS:

SIGNED

R. L. Yeager
Superintendent or Foreman.

Per #2165

