



Legacy Scout Tickets from Pure Oil Company

8-20-2021

**MGRRE_PureOilScoutTickets_HERKLOTZ, RUDY ET
UX_1_21087022260000**

MGRRE
Western Michigan University

Follow this and additional works at: <https://scholarworks.wmich.edu/pure>



Part of the Geology Commons

WMU ScholarWorks Citation

MGRRE, "MGRRE_PureOilScoutTickets_HERKLOTZ, RUDY ET UX_1_21087022260000" (2021). *Legacy Scout Tickets from Pure Oil Company*. 4606.
<https://scholarworks.wmich.edu/pure/4606>

This Document is brought to you for free and open access via ScholarWorks at WMU. It has been accepted for inclusion in Legacy Scout Tickets from Pure Oil Company by an authorized administrator of ScholarWorks at WMU. See the National Digital Catalogue - Science Base Catalogue for more collections submitted by MGRRE.



MGRRE_PureOilScoutTickets_HERKLOTZ, RUDY ET UX_1_21087022260000

API 21087022260000

Permit Number 2226

Lease Name HERKLOTZ, RUDY ET UX

Well Number 1

County Lapeer

Township 08N

Range 10E

Section 28

2021 DEQ or Pure co_name Newnom, Clyde

Pure Number 28

Latitude 43.07976

Longitude -83.29099

COMPLETION RECORD BY OTHER OPERATORS

DATE November 15, 1934

LOCATION REPORT

No. 28

STATE Michigan COUNTY Lapeer DIST. Mayfield TWP. Mayfield SEC. 28 TOWN 8N RANGE 10E

WELL No. 1 (SERIAL No. 28) FARM Rudy Herklotz ACRES

NAME OF STREAM OR WATERS QUADRANGLE NW-NE-SE

OPERATOR Clyde Newnom Map Mayfield Township, Lapeer County

330 330 Feet from North Line of Farm

990 990 " " East " " "

" " South " " "

" " West " " "

330 330 Feet from North Line of Section

990 990 " " East " " "

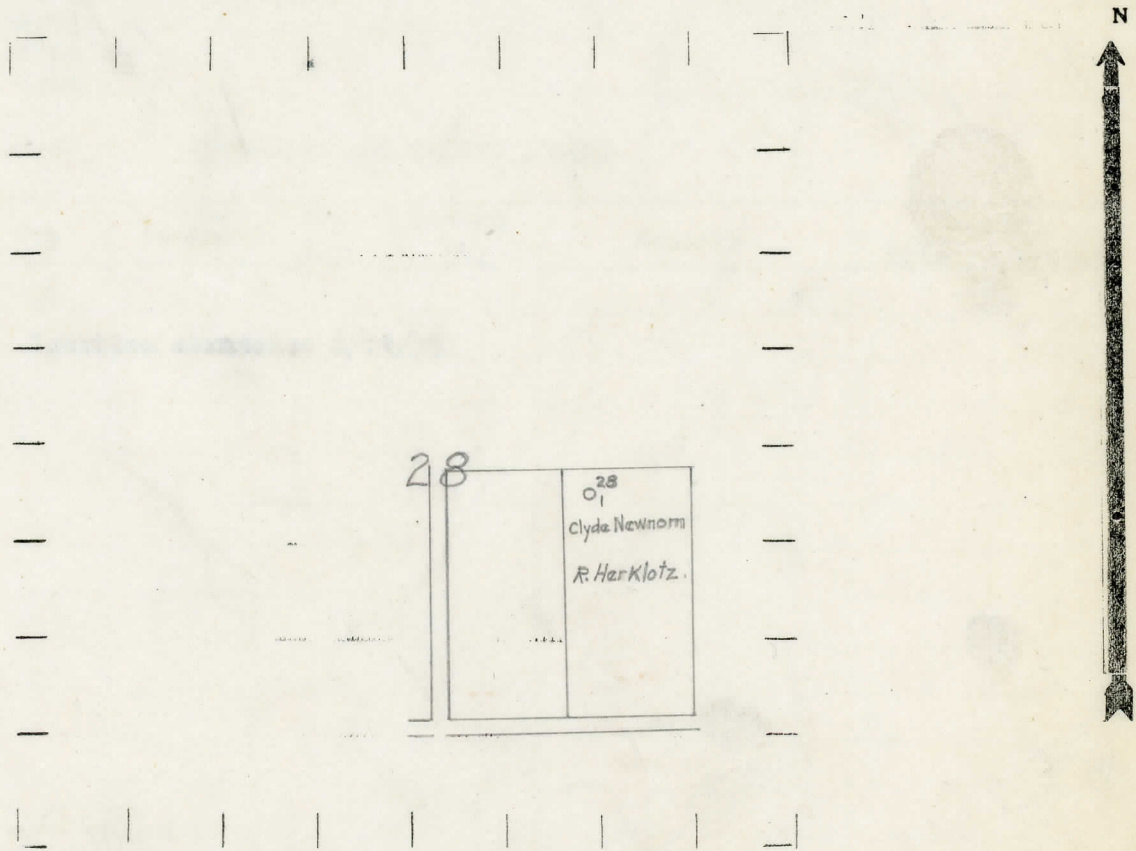
" " South " " "

" " West " " "

LEGEND

- LOCATION
- ⊕ RIG
- ⊕ DRILLING
- ☀ GAS WELL
- OIL WELL
- ⊕ SMALL OIL WELL
- ⊕ DRY HOLE
- ⊕ DRY SHOWING OIL
- ⊕ DRY SHOWING GAS
- ⊕ ABANDONED LOCATION
- ☀ ABANDONED GAS WELL
- ⊕ ABANDONED OIL WELL

NOTE: Below make tracing from map, (when no map is obtainable make sketch) showing farm, center of section, this location with measurements and also wells, dry holes, or other locations in the vicinity of this location.



REMARKS:

SIGNED

R.D. Yeager
Superintendent or Foreman.

Date 6/27/35 No. 28

State Michigan County Lapeer Dist. Mayfield Twp. 3N Rge. 10E

Well No. 1 (Serial No.) (County No.) 28 Farm Rudy Herklotz et ux Acres

Operator Clyde Newnom Information secured from Scouting Dept. by

Date well started Not started Date well completed Not completed Elevation 823.4'

PRODUCTION RECORD

1st 24 hours natural LOCATION ABANDONED

2nd 24 hours natural

Date of shot No. of quarts From to From to

Date of acid No. of gallons

1st 24 hours after acid shot

2nd 24 hours after acid shot

FORMATION AND CASING RECORD

Formation	Top	Bottom	Top Pay	Bottom Pay	Remarks	Casing	
						Size	Set at
Location abandoned 6/24/35.							

Remarks

Signed S. H. Bell