



Western Michigan University
ScholarWorks at WMU

Legacy Scout Tickets from Pure Oil Company

8-20-2021

MGRRE_PureOilScoutTickets_Thom_1_21087022710000

MGRRE

Western Michigan University

Follow this and additional works at: <https://scholarworks.wmich.edu/pure>



Part of the Geology Commons

WMU ScholarWorks Citation

MGRRE, "MGRRE_PureOilScoutTickets_Thom_1_21087022710000" (2021). *Legacy Scout Tickets from Pure Oil Company*. 4607.

<https://scholarworks.wmich.edu/pure/4607>

This Document is brought to you for free and open access via ScholarWorks at WMU. It has been accepted for inclusion in Legacy Scout Tickets from Pure Oil Company by an authorized administrator of ScholarWorks at WMU. See the National Digital Catalogue - Science Base Catalogue for more collections submitted by MGRRE.



MGRRE_PureOilScoutTickets_Thom_1_21087022710000

API 21087022710000

Permit Number 2271

Lease Name Thom

Well Number 1

County Lapeer

Township 08N

Range 09E

Section 9

2021 DEQ or Pure co_name Holley, C. M.

Pure Number 29

Latitude 43.12522

Longitude -83.40983

THE PURE OIL COMPANY

DATE December 13, 1934

LOCATION REPORT

No. 29

STATE Michigan COUNTY Lapeer

DIST. Oregon TWP. Oregon SEC. 9 TOWN 8N RANGE 9E

WELL No. 1 (SERIAL No. 29) FARM Mary Thom et al ACRES

NAME OF STREAM OR WATERS QUADRANGLE SW-NE-NE
SW-NE-NE

OPERATOR C. M. Holley Map Oregon Township, Lapeer County

C. M. Holley Oregon - Lapeer.

Feet from North Line of Farm

" " East " " "

330 330 " " South " " "

330 330 " " West " " "

Feet from North Line of Section

990 990 " " East " " "

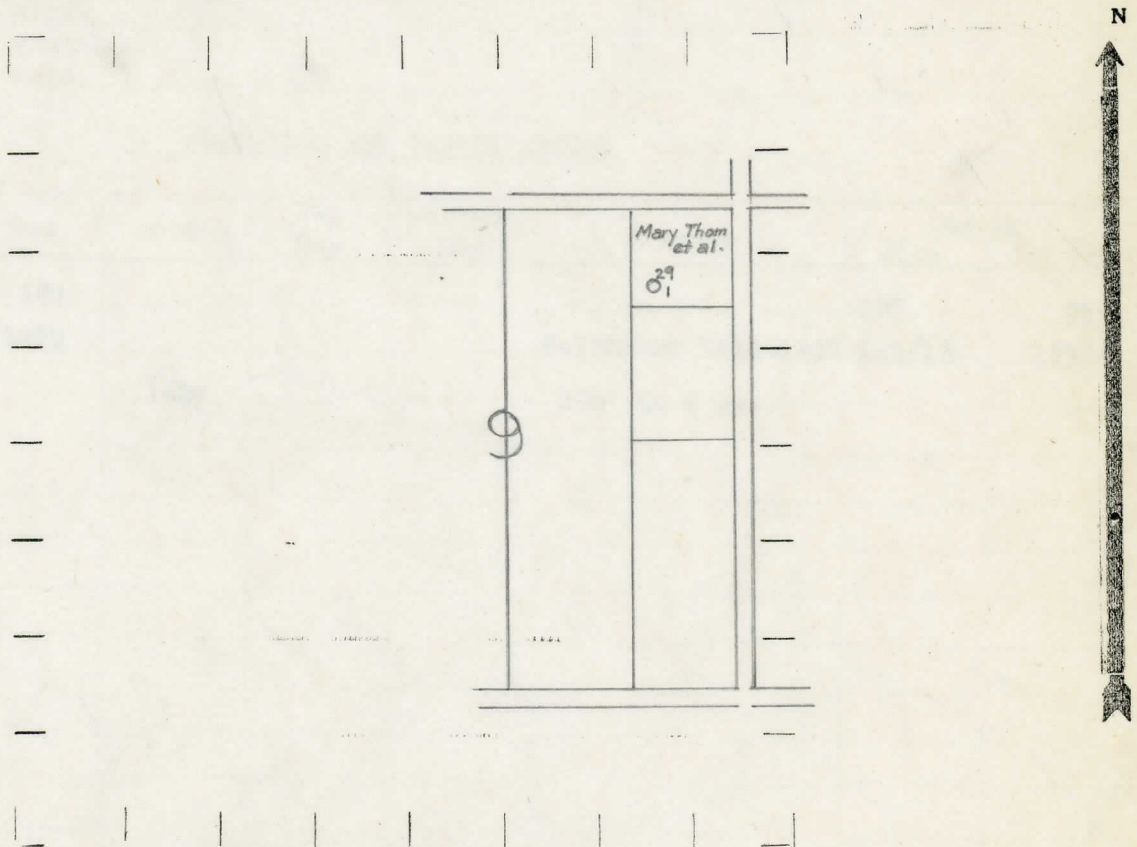
" " South " " "

" " West " " "

LEGEND

- LOCATION
- ⊕ RIG
- ⊕ DRILLING
- ☀ GAS WELL
- OIL WELL
- ⊕ SMALL OIL WELL
- ⊕ DRY HOLE
- ⊕ DRY SHOWING OIL
- ⊕ DRY SHOWING GAS
- ⊕ ABANDONED LOCATION
- ☀ ABANDONED GAS WELL
- ⊕ ABANDONED OIL WELL

NOTE: Below make tracing from map, (when no map is obtainable make sketch) showing farm, center of section, this location with measurements and also wells, dry holes, or other locations in the vicinity of this location.



REMARKS:

SIGNED

R. L. Yeager

Superintendent or Foreman.

COMPLETION RECORD OF WELLS DRILLED BY OTHER OPERATORS

Michigan Producing Division

Date April 11, 1935 No. 29
State Michigan County Lapeer Dist. Oregon Twp. Oregon Sec. 9 Twp. 8N Rge. 9E
Well No. 1 (County No.) 29 Farm Mary Thom et al Acres
Operator C. M. Holley Information secured from Scouting Department by
Date well started 12/27/34 Date well completed 2/22/35 Elevation 775.8'

PRODUCTION RECORD

1st 24 hours natural Dry Hole
2nd 24 hours natural
Date of shot No. of quarts From to From to
Date of acid No. of gallons
1st 24 hours after acid shot
2nd 24 hours after acid shot

FORMATION AND CASING RECORD

Table with 7 columns: Formation, Top, Bottom, Top Pay, Bottom Pay, Remarks, Casing (Size, Set at). Rows include Marshall (187), Berea (1419), Total Depth (1429), and Salt Water (1419-1428).

Remarks

Signed J. H. Bell