



Western Michigan University
ScholarWorks at WMU

Legacy Scout Tickets from Pure Oil Company

8-20-2021

MGRRE_PureOilScoutTickets_An kley, Victor_1_na

MGRRE

Western Michigan University

Follow this and additional works at: <https://scholarworks.wmich.edu/pure>



Part of the Geology Commons

WMU ScholarWorks Citation

MGRRE, "MGRRE_PureOilScoutTickets_An kley, Victor_1_na" (2021). *Legacy Scout Tickets from Pure Oil Company*. 4616.

<https://scholarworks.wmich.edu/pure/4616>

This Document is brought to you for free and open access via ScholarWorks at WMU. It has been accepted for inclusion in Legacy Scout Tickets from Pure Oil Company by an authorized administrator of ScholarWorks at WMU. See the National Digital Catalogue - Science Base Catalogue for more collections submitted by MGRRE.



MGRRE_PureOilScoutTickets_An kley, Victor_1_na

API na

Permit Number na

Lease Name An kley, Victor

Well Number 1

County Lapeer

Township 09N

Range 12E

Section 32

2021 DEQ or Pure co_name Hogan, Inc

Pure Number 38

Latitude 43.1597596

Longitude -83.0853112

THE PURE OIL COMPANY
COMPLETION RECORD OF WELLS DRILLED BY OTHER OPERATORS
LOCATION REPORT

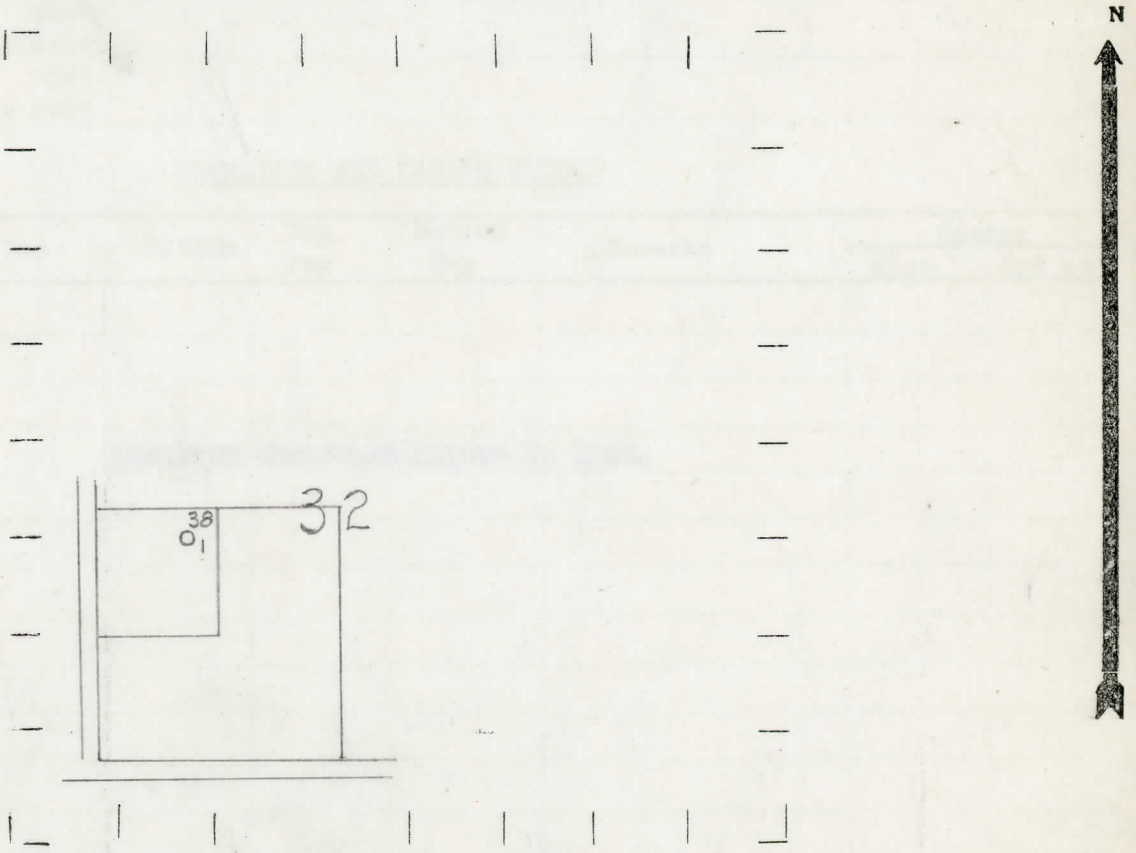
DATE May 12, 1938 No. 38
STATE Michigan COUNTY Lapeer DIST. Burnside TWP. Burnside SEC. 32 TOWN 9 N. RANGE 12 E.
WELL No. 1 (SERIAL No. 38) FARM Victor Ankley ACRES
NAME OF STREAM OR WATERS _____ QUADRANGLE NE NW SW

OPERATOR Hogan, Inc. Map Burnside Township, Lapeer County
Hogan, Inc. Burnside - Lapeer.

330 330 Feet from North Line of Farm
330 330 " " East " " "
" " South " " "
" " West " " "
330 330 Feet from North Line of Section
" " East " " "
" " South " " "
990 990 " " West " " "

- LEGEND**
- LOCATION
 - ⊕ RIG
 - ⊕ DRILLING
 - ☀ GAS WELL
 - OIL WELL
 - ⊕ SMALL OIL WELL
 - ⊖ DRY HOLE
 - ⊕ DRY SHOWING OIL
 - ⊖ DRY SHOWING GAS
 - ⊖ ABANDONED LOCATION
 - ☀ ABANDONED GAS WELL
 - ⊖ ABANDONED OIL WELL

NOTE: Below make tracing from map, (when no map is obtainable make sketch) showing farm, center of section, this location with measurements and also wells, dry holes, or other locations in the vicinity of this location.



REMARKS:

SIGNED _____
Superintendent or Foreman.

