



Western Michigan University
ScholarWorks at WMU

Legacy Scout Tickets from Pure Oil Company

8-20-2021

MGRRE_PureOilScoutTickets_Overby, Louis_1_21089101030000

MGRRE

Western Michigan University

Follow this and additional works at: <https://scholarworks.wmich.edu/pure>



Part of the Geology Commons

WMU ScholarWorks Citation

MGRRE, "MGRRE_PureOilScoutTickets_Overby, Louis_1_21089101030000" (2021). *Legacy Scout Tickets from Pure Oil Company*. 4631.

<https://scholarworks.wmich.edu/pure/4631>

This Document is brought to you for free and open access via ScholarWorks at WMU. It has been accepted for inclusion in Legacy Scout Tickets from Pure Oil Company by an authorized administrator of ScholarWorks at WMU. See the National Digital Catalogue - Science Base Catalogue for more collections submitted by MGRRE.



MGRRE_PureOilScoutTickets_Overby, Louis_1_21089101030000

API 21089101030000

Permit Number 10103

Lease Name Overby, Louis

Well Number 1

County Leelanau

Township 29N

Range 12W

Section 5

2021 DEQ or Pure co_name Copeland, Fred M. and Barton, P. M.

Pure Number 3

Latitude 44.94402

Longitude -85.77694

THE PURE OIL COMPANY

LOCATION REPORT

Date May 19, 1943

A.F.E. No. _____

Division Mich. Producing District _____

Lease Louis Overby
Louis Overby

Acres _____ Lease No. _____ Elevation _____ Well No. 1 (Serial No. 3)

Quadrangle SE-SE-NE Sec. 5 Twp. 29 N Rge. 12 W Centerville
SE SE NE 5 29 N 12 W Centerville

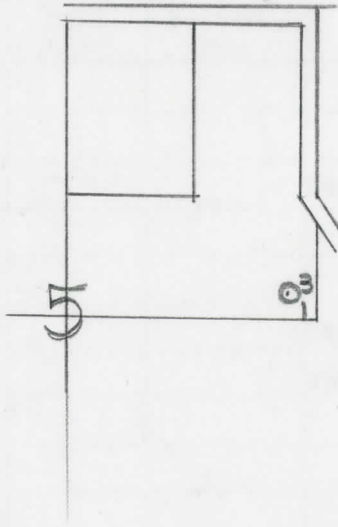
Survey _____ County Leelanau State Michigan

Operator Fred M. Copeland & P. M. Barton Map Centerville Twp. Leelanau Co
Fred M. Copeland & P. M. Barton Centerville Township, Leelanau County

Feet from North Line of Lease			
<u>330</u>	<u>330</u>	" "	East " "
<u>330</u>	<u>330</u>	" "	South " "
		" "	West " "
Feet from North Line of Section			
<u>330</u>	<u>330</u>	" "	East " <u>1/4</u>
<u>330</u>	<u>330</u>	" "	South " "
		" "	West " "

v v

- LEGEND
- Location
 - ☀ Gas Well
 - Oil Well
 - ☀ Gas - Distillate Well
 - or ○ Dry Hole
 - Dry Showing Oil
 - ☀ Dry Showing Gas
 - ⊗ Abandoned Location
 - ☀ or ☀ Abandoned Gas Well
 - or ● Abandoned Oil Well
 - ⊗ or ⊗ Input Well



Scale _____

Remarks: _____

Submitted by TRN _____
Civil Engineer

Approved by _____
Division Manager

Approved by _____
Vice-President - General Manager

COMPLETION RECORD OF WELLS DRILLED BY OTHER OPERATORS

Michigan Producing Division

Date December 22, 1943 No. 3
 State Mich. County Leelanau ~~Dist.~~ Twp. Centerville Sec. 5 Twp. 29 N Rge. 12 W
 Well No. 1 (Serial No.) 3 Farm Louis Overby Acres _____
 Operator F. M. Copeland-P. M. Barton Information secured ~~from~~ Scouting Department
 Date well started 6-27-43 Date well completed 12-17-43 Elevation 1003.6

PRODUCTION RECORD

1st 24 hours natural Dry Hole
 2nd 24 hours natural _____
 Date of shot _____ No. of quarts _____ From _____ to _____ From _____ to _____
 Date of acid _____ No. of gallons _____
 1st 24 hours after acid shot _____
 2nd 24 hours after acid shot _____

FORMATION AND CASING RECORD

Formation	Top	Bottom	Top Pay	Bottom Pay	Remarks	Casing	
						Size	Set at
Drift		590				12 1/2"	565
Traverse Lime	610					10"	940
Dundee	1330				See remarks below.	5"	1875
Detroit River	1425						
Sylvania	2160 ?						
Salt	2878	Log			Cored: 4000-4014 - rec. rock salt and Anhydrate.		
Niagaran	4095						
Total Depth		4307					

Remarks Drill stem test at 1416 - packer at 1406 - open 20 minutes - recovered mud.
Formation tops reported as sample tops by Ohio Oil Company and Sohio Producing Company. The
5-3/16" casing set during cleaning out process with cable tools.

Signed D. G. Shackelford