



Western Michigan University
ScholarWorks at WMU

Legacy Scout Tickets from Pure Oil Company

8-20-2021

**MGRRE_PureOilScoutTickets_McCarbery, R.
J._1_21091027590000**

MGRRE
Western Michigan University

Follow this and additional works at: <https://scholarworks.wmich.edu/pure>



Part of the Geology Commons

WMU ScholarWorks Citation

MGRRE, "MGRRE_PureOilScoutTickets_McCarbery, R. J._1_21091027590000" (2021). *Legacy Scout Tickets from Pure Oil Company*. 4641.
<https://scholarworks.wmich.edu/pure/4641>

This Document is brought to you for free and open access via ScholarWorks at WMU. It has been accepted for inclusion in Legacy Scout Tickets from Pure Oil Company by an authorized administrator of ScholarWorks at WMU. See the National Digital Catalogue - Science Base Catalogue for more collections submitted by MGRRE.



MGRRE_PureOilScoutTickets_McCarbery, R. J._1_21091027590000

API 21091027590000

Permit Number 2759

Lease Name McCarbery, R. J.

Well Number 1

County Lenawee

Township 05S

Range 05E

Section 36

2021 DEQ or Pure co_name Socony Mobil Oil Company, Incorporated

Pure Number 15

Latitude 42.00869

Longitude -83.78772

DATE 9-19-35

LOCATION REPORT

No. 1515

STATE Michigan COUNTY Lenawee DIST. Macon SEC. 36 TOWN 5-S. RANGE 5-E.
TWP. Macon PREC. R.J. McCarbery R. J. McCarbery ACRES

WELL No. 1 (SERIAL No. 15) FARM NW-NE-NW

NAME OF STREAM OR WATERS QUADRANGLE NW-NE-NW

OPERATOR Socony-Vacuum Oil Co. Map Macon Twp., Lenawee County
Socony-Vacuum Oil Co. Macon - Lenawee Co.

330 330 Feet from North Line of Farm
990 990 " " East " " "

" " South " " "
" " West " " "

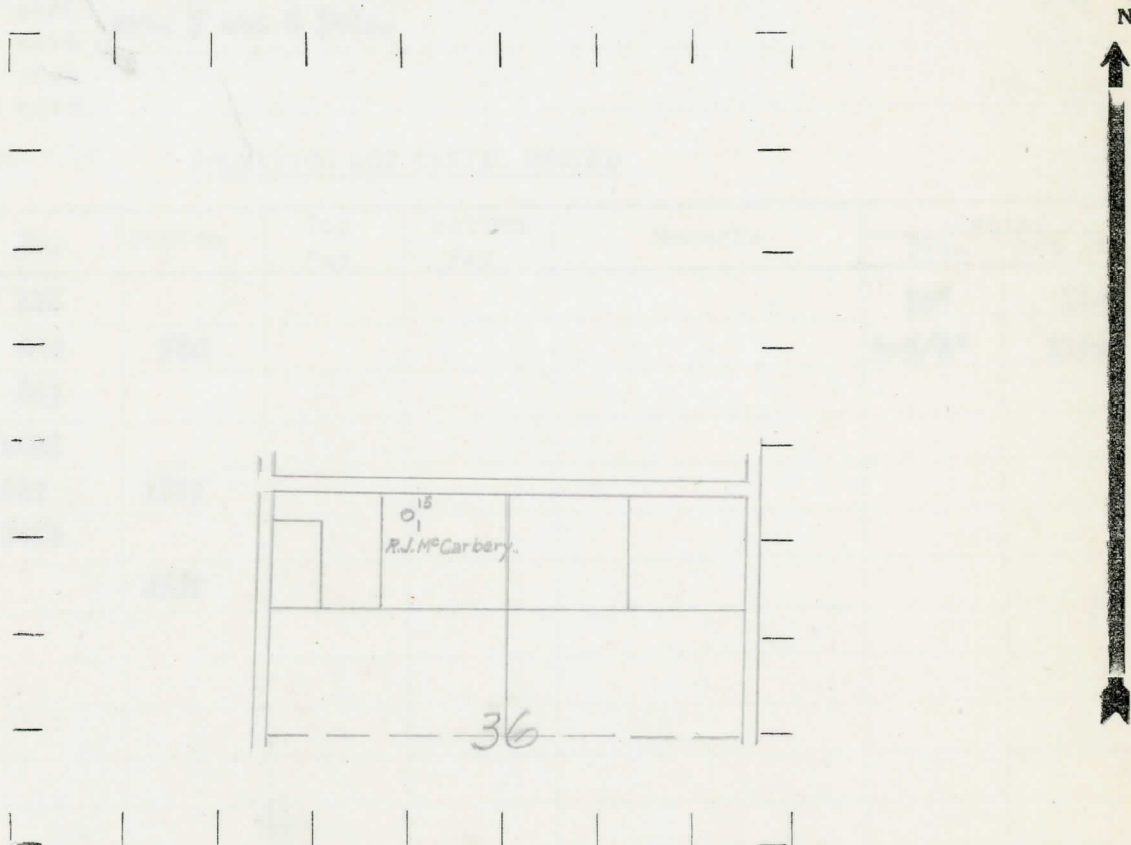
330 330 Feet from North Line of Section
990 990 " " East " " "

" " South " " "
" " West " " "

LEGEND

- LOCATION
- ⊕ RIG
- ⊕ DRILLING
- ☀ GAS WELL
- OIL WELL
- ⊙ SMALL OIL WELL
- ⊙ DRY HOLE
- DRY SHOWING OIL
- ☀ DRY SHOWING GAS
- ⊙ ABANDONED LOCATION
- ☀ ABANDONED GAS WELL
- ⊙ ABANDONED OIL WELL

NOTE: Below make tracing from map, (when no map is obtainable make sketch) showing farm, center of section, this location with measurements and also wells, dry holes, or other locations in the vicinity of this location.



REMARKS:

SIGNED

R. L. Yerga

Superintendent or Foreman.

COMPLETION RECORD OF WELLS DRILLED BY OTHER OPERATORS

Michigan Producing Division

Date July 16, 1936 No. 15
 State Michigan County Lenawee Dist. _____
 (Serial No.) _____ Twp. Macon Sec. 36 Twp. 5 S Rge. 5 E
 Well No. 1 (County No.) 15 Farm R. L. McCarbery Acres _____
 Operator Socony-Vacuum Oil Co. Information secured ~~xxxx~~ by Scouting Dept.
 Date well started 9-18-35 Date well completed 1-19-36 Elevation 694'

PRODUCTION RECORD

1st 24 hours natural Filled up 300'
 2nd 24 hours natural _____
 Date of shot 1-25-36 & 6-25-36 No. of quarts 460 From 2477½ to 2486 From 2486 to 2505
 and 2544 to 2552
 Date of acid 6-3-36 No. of gallons 1000
 1st 24 hours after acid shot Est. 5 and 6 Bbls.
 shot _____
 2nd 24 hours after acid _____

FORMATION AND CASING RECORD

Formation	Top	Bottom	Top Pay	Bottom Pay	Remarks	Casing	
						Size	Set At
Dundee	118					10"	110
Sylvania	444	580				6-5/8"	2192
Salina	863						
Niagran	1488						
Clinton	1687	1815					
Trenton	2450						
Total Depth		2552					

Remarks Show oil and gas 118-122-show oil 375-382-show gas 1051-1058-show gas and water 1130-1137 - show oil 1145-1152. Show oil 2456-2462-show oil 2462-2470-show oil 2491-2500-show oil 2546-2552. Plugged and abandoned.

Signed J.A. Bell