



Western Michigan University
ScholarWorks at WMU

Legacy Scout Tickets from Pure Oil Company

8-20-2021

MGRRE_PureOilScoutTickets_Earl, Kittie_1_unk

MGRRE

Western Michigan University

Follow this and additional works at: <https://scholarworks.wmich.edu/pure>



Part of the Geology Commons

WMU ScholarWorks Citation

MGRRE, "MGRRE_PureOilScoutTickets_Earl, Kittie_1_unk" (2021). *Legacy Scout Tickets from Pure Oil Company*. 4688.

<https://scholarworks.wmich.edu/pure/4688>

This Document is brought to you for free and open access via ScholarWorks at WMU. It has been accepted for inclusion in Legacy Scout Tickets from Pure Oil Company by an authorized administrator of ScholarWorks at WMU. See the National Digital Catalogue - Science Base Catalogue for more collections submitted by MGRRE.



MGRRE_PureOilScoutTickets_Earl, Kittie_1_unk

API unk

Permit Number unk

Lease Name Earl, Kittie

Well Number 1

County Livingston

Township 02N

Range 03E

Section 17

2021 DEQ or Pure co_name F. Chapman

Pure Number 52

Latitude 42.5606455

Longitude -84.1179716

THE PURE OIL COMPANY

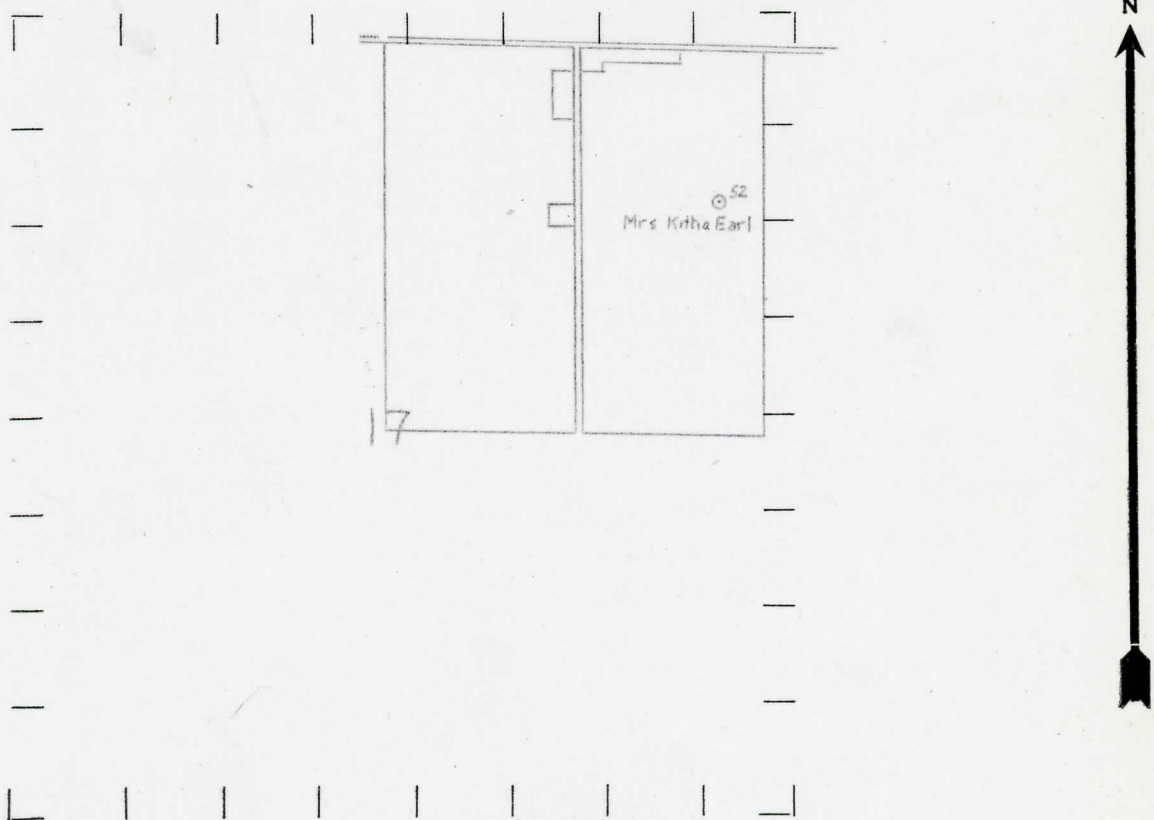
DATE February 5, 1934 COMPLETION & LOCATION REPORT No. 52

STATE Michigan COUNTY Livingston DIST. Iosco TWP. Iosco SEC. 17 TOWN 2 N RANGE 3 E
 WELL No. 1 (SERIAL No. 52) FARM Mrs. Kittie Earl (Water Well) ACRES
 NAME OF STREAM OR WATERS QUADRANGLE SE-NE-NE
 OPERATOR Drilled by F. Chapman MAP Iosco Township, Livingston County

Feet from North Line of Farm
 " " East " " "
 " " South " " "
 " " West " " "
1050 Feet from North Line of Section
300 " " East " " "
 " " South " " "
 " " West " " "

- LEGEND**
- LOCATION
 - ⊕ RIG
 - ⊕ DRILLING
 - ⊙ GAS WELL
 - OIL WELL
 - ◆ SMALL OIL WELL
 - ⊙ DRY HOLE
 - ◆ DRY SHOWING OIL
 - ⊙ DRY SHOWING GAS
 - ⊙ ABANDONED LOCATION
 - ⊙ ABANDONED GAS WELL
 - ⊙ ABANDONED OIL WELL

NOTE: Below make tracing from map, (when no map is obtainable make sketch) showing farm, center of section, this location with measurements and also wells, dry holes, or other locations in the vicinity of this location. Make copy to keep for reference and send original to Columbus office.



REMARKS: Of Geological Importance Drift - 72'
Upper Marshall - 72'

SIGNED _____
 Superintendent or Foreman.