



Western Michigan University
ScholarWorks at WMU

Legacy Scout Tickets from Pure Oil Company

8-20-2021

MGRRE_PureOilScoutTickets_Standard Oil Service Station (Water Well)_1_unk

MGRRE

Western Michigan University

Follow this and additional works at: <https://scholarworks.wmich.edu/pure>



Part of the Geology Commons

WMU ScholarWorks Citation

MGRRE, "MGRRE_PureOilScoutTickets_Standard Oil Service Station (Water Well)_1_unk" (2021). *Legacy Scout Tickets from Pure Oil Company*. 4690.
<https://scholarworks.wmich.edu/pure/4690>

This Document is brought to you for free and open access via ScholarWorks at WMU. It has been accepted for inclusion in Legacy Scout Tickets from Pure Oil Company by an authorized administrator of ScholarWorks at WMU. See the National Digital Catalogue - Science Base Catalogue for more collections submitted by MGRRE.



MGRRE_PureOilScoutTickets_Standard Oil Service Station (Water Well)_1_unk

API unk

Permit Number unk

Lease Name Standard Oil Service Station (Water Well)

Well Number 1

County Livingston

Township 02N

Range 06E

Section 31

2021 DEQ or Pure co_name Std. Oil Serv. Station (Drilled by Chapman)

Pure Number 54

Latitude 42.5221812

Longitude -83.7806431

THE PURE OIL COMPANY

DATE February 14, 1934 COMPLETION & LOCATION REPORT

No. 54

STATE Michigan COUNTY Livingston DIST. Brighton TWP. Brighton SEC. 31 TOWN 2 N RANGE 6 E

WELL No. 1 (SERIAL No. 54) FARM Standard Oil Service Station (Water Well) ACRES

NAME OF STREAM OR WATERS _____ QUADRANGLE NE-SW-NE

OPERATOR Std.Oil Ser. Sta. (Drilled by Chapman) MAP NE-SW-NE City of Brighton

_____ Feet from North Line of Farm

_____ " " East " " "

_____ " " South " " "

_____ " " West " " "

1700 Feet from North Line of Section

1700 " " East " " "

_____ " " South " " "

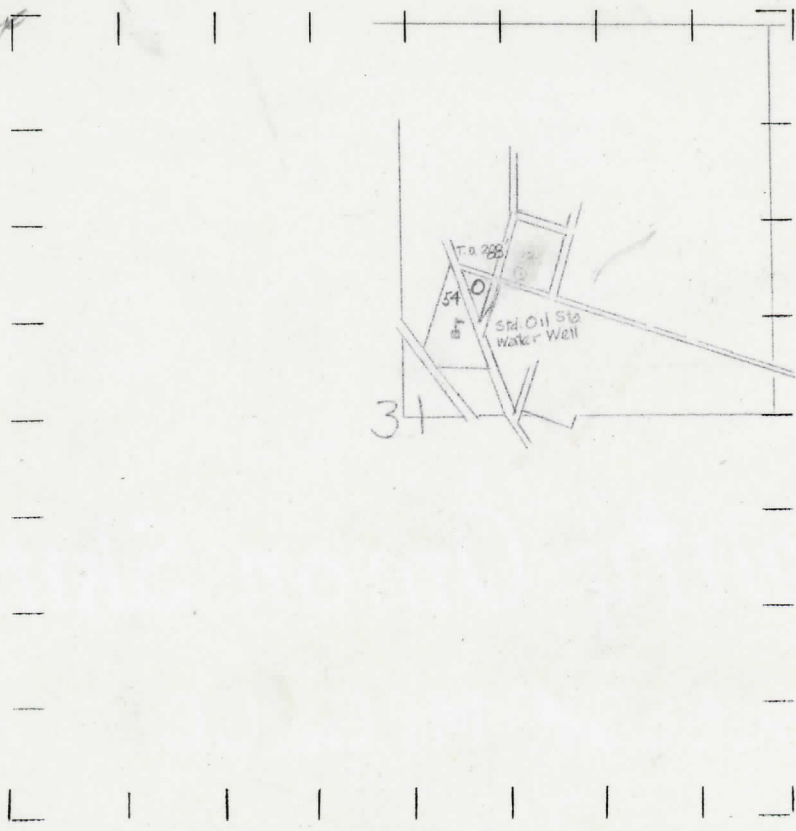
_____ " " West " " "

LEGEND

- LOCATION
- ① RIG
- ⊕ DRILLING
- ⊗ GAS WELL
- OIL WELL
- ⬮ SMALL OIL WELL
- ⊕ DRY HOLE
- ⬮ DRY SHOWING OIL
- ⊗ DRY SHOWING GAS
- ⊖ ABANDONED LOCATION
- ⊗ ABANDONED GAS WELL
- ⬮ ABANDONED OIL WELL

NOTE: Below make tracing from map, (when no map is obtainable make sketch) showing farm, center of section, this location with measurements and also wells, dry holes, or other locations in the vicinity of this location. Make copy to keep for reference and send original to Columbus office.

Elev. 930 approx



REMARKS:

_____ Berea - 174'

_____ Data by Geological Department Total Depth - 288'

_____ Saturation 190-200'

SIGNED

Superintendent or Foreman.