



Western Michigan University
ScholarWorks at WMU

Legacy Scout Tickets from Pure Oil Company

8-20-2021

MGRRE_PureOilScoutTickets_Haas, John_1_21093037000000

MGRRE

Western Michigan University

Follow this and additional works at: <https://scholarworks.wmich.edu/pure>



Part of the Geology Commons

WMU ScholarWorks Citation

MGRRE, "MGRRE_PureOilScoutTickets_Haas, John_1_21093037000000" (2021). *Legacy Scout Tickets from Pure Oil Company*. 4693.

<https://scholarworks.wmich.edu/pure/4693>

This Document is brought to you for free and open access via ScholarWorks at WMU. It has been accepted for inclusion in Legacy Scout Tickets from Pure Oil Company by an authorized administrator of ScholarWorks at WMU. See the National Digital Catalogue - Science Base Catalogue for more collections submitted by MGRRE.



MGRRE_PureOilScoutTickets_Haas, John_1_21093037000000

API 21093037000000

Permit Number 3700

Lease Name Haas, John

Well Number 1

County Livingston

Township 04N

Range 03E

Section 6

2021 DEQ or Pure co_name Turner, E. J.

Pure Number 57

Latitude 42.77038

Longitude -84.14687

The Pure Oil Company
THE PURE OIL COMPANY

DATE November 27, 1936

LOCATION REPORT

No. 57

STATE Michigan COUNTY Livingston DIST. Conway SEC. 6 TOWN. 4 N. 4 N. RANGE 3 E. 3 E.
WELL No. 1 (SERIAL No. 57) FARM John Haas ACREES _____

NAME OF STREAM OR WATERS _____ QUADRANGLE NE 1/4

OPERATOR E. J. Turner Map Conway Township, Livingston County
E. J. Turner. Conway - Livingston Co.

_____ Feet from North Line of Farm

_____ " " East " " "

66 660 " " South " " "

33 330 " " West " " "

_____ Feet from North Line of Section

_____ " " East " " "

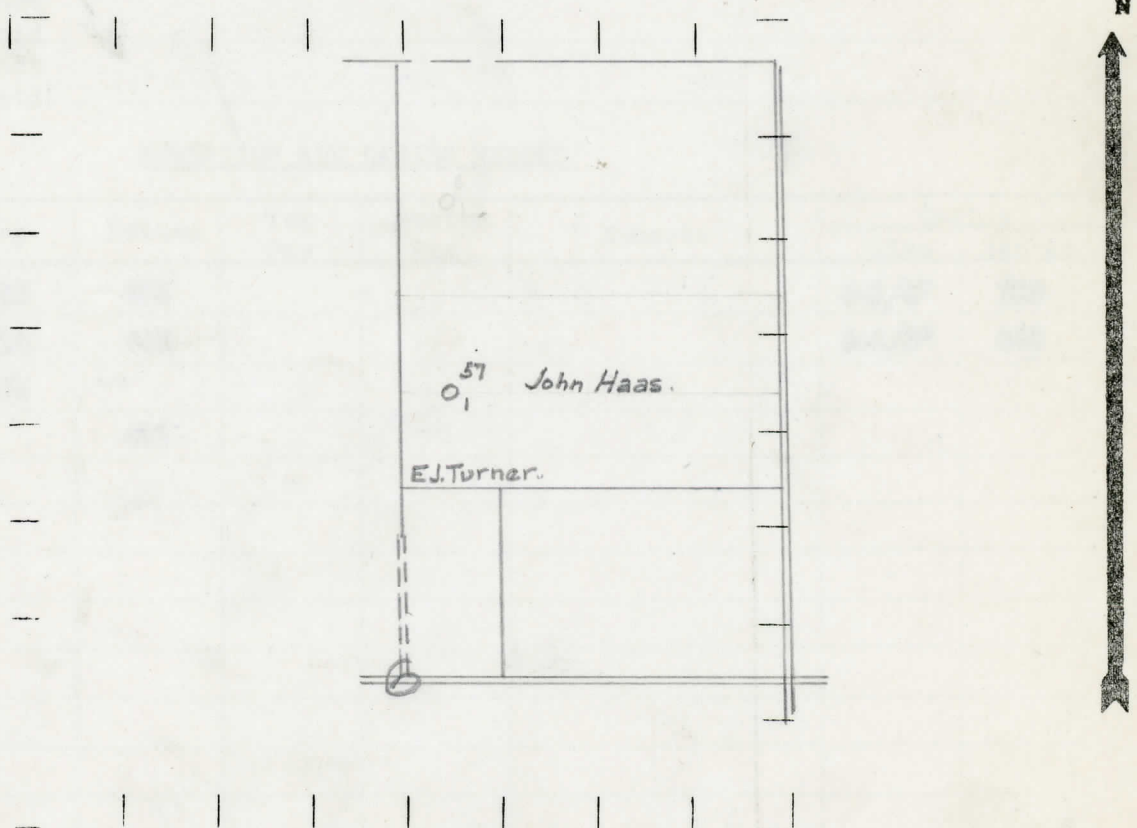
198 1980 " " South " 1/4 "

33 330 " " West " 1/4 "

LEGEND

- LOCATION
- ⊕ RIG
- ⊕ DRILLING
- ☀ GAS WELL
- OIL WELL
- ⊕ SMALL OIL WELL
- ⊕ DRY HOLE
- ⊕ DRY SHOWING OIL
- ⊕ DRY SHOWING GAS
- ⊕ ABANDONED LOCATION
- ☀ ABANDONED GAS WELL
- ⊕ ABANDONED OIL WELL

NOTE: Below make tracing from map, (when no map is obtainable make sketch) showing farm, center of section, this location with measurements and also wells, dry holes, or other locations in the vicinity of this location.



REMARKS: _____

SIGNED R. L. Yeager
Superintendent of Foreman. *ps*

