



Western Michigan University
ScholarWorks at WMU

Legacy Scout Tickets from Pure Oil Company

8-20-2021

MGRRE_PureOilScoutTickets_International Migratory Bird Preserve_1_21093087830000

MGRRE

Western Michigan University

Follow this and additional works at: <https://scholarworks.wmich.edu/pure>



Part of the Geology Commons

WMU ScholarWorks Citation

MGRRE, "MGRRE_PureOilScoutTickets_International Migratory Bird Preserve_1_21093087830000" (2021).
Legacy Scout Tickets from Pure Oil Company. 4695.
<https://scholarworks.wmich.edu/pure/4695>

This Document is brought to you for free and open access via ScholarWorks at WMU. It has been accepted for inclusion in Legacy Scout Tickets from Pure Oil Company by an authorized administrator of ScholarWorks at WMU. See the National Digital Catalogue - Science Base Catalogue for more collections submitted by MGRRE.



**MGRRE_PureOilScoutTickets_International Migratory Bird
Preserve_1_21093087830000**

API 21093087830000

Permit Number 8783

Lease Name International Migratory Bird Preserve

Well Number 1

County Livingston

Township 03N

Range 06E

Section 24

2021 DEQ or Pure co_name Voorhees Drilling Company

Pure Number 59

Latitude 42.64883

Longitude -83.68565

THE PURE OIL COMPANY

LOCATION REPORT

No. 59

DATE July 23, 1941

STATE Michigan COUNTY Livingston DIST Hartland TWP Hartland SEC 24 TOWN 33/N RANGE 6 E

WELL No. 1 (SERIAL No. 59) FARM International Migratory Bird Preserve ACRES

NAME OF STREAM OR WATERS QUADRANGLE NE NW NE

OPERATOR Voorhees Drilling Company Map Hartland Township, Livingston County

300 300 Feet from North Line of Farm

1520 1520 " " East " " "

" " South " " "

" " West " " "

300 300 Feet from North Line of Section

1520 1520 " " East " " "

" " South " " "

" " West " " "

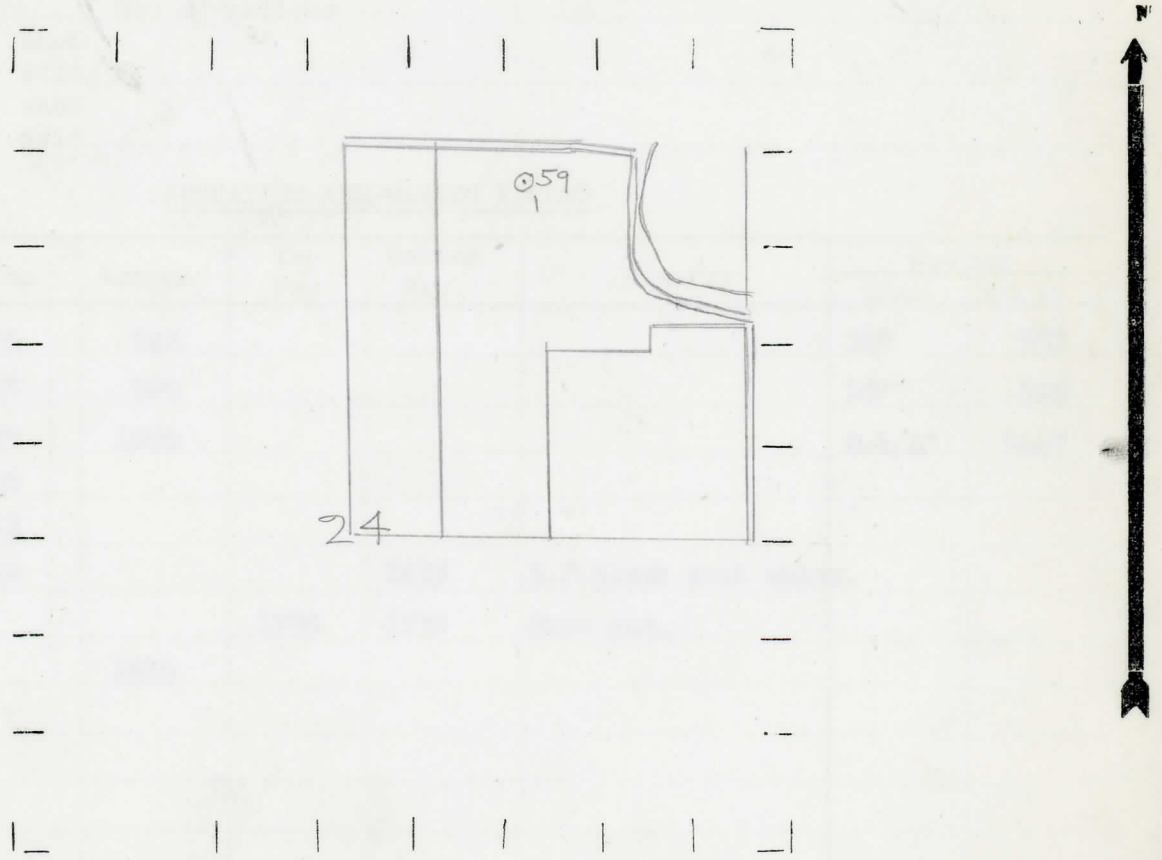
Rig

Hartland - Livingston

LEGEND

- LOCATION, RIG, DRILLING, GAS WELL, OIL WELL, SMALL OIL WELL, DRY HOLE, DRY SHOWING OIL, DRY SHOWING GAS, ABANDONED LOCATION, ABANDONED GAS WELL, ABANDONED OIL WELL

NOTE: Below make tracing from map. (when no map is obtainable make sketch) showing farm, center of section, this location with measurements and also wells, dry holes, or other locations in the vicinity of this location.



REMARKS:

SIGNED

W

Superintendent or Foreman

Date September 10, 1941 No. 59
 State Mich. County Livingston Dist. Duro
 Twp. Hartland Sec. 24 Twp. 3 N Rge. 6 E
 Well No. 1 (Serial No.)
 (County No.) 59 Farm International Migratory Acres
Bird Preserve By
 Operator Voorhees Drilling Company Information secured from Scouting Department
 Date well started 7-26-41 Date well completed 8-31-41 Elevation 1056.8

PRODUCTION RECORD

1st 24 hours natural Dry Hole
 2nd 24 hours natural
 Date of shot No. of quarts From to From to
 Date of acid No. of gallons
 1st 24 hours after acid shot
 2nd 24 hours after acid shot

FORMATION AND CASING RECORD

Formation	Top	Bottom	Top Pay	Bottom Pay	Remarks	Casing	
						Size	Set at
Sunbury	725	742				14"	335
Berea	742	760				10"	785
Antrim	938	1090				8-1/4"	1447
Traverse Line	1130						
Dundee	1433						
Monroe	1610			1635	H.F. black salt water.		
			1735	1750	Show gas.		
Total Depth		1815					

Remarks

Signed D. C. Shackelford