



Western Michigan University
ScholarWorks at WMU

Legacy Scout Tickets from Pure Oil Company

8-20-2021

MGRRE_PureOilScoutTickets_Memphis Village_unk_unk

MGRRE

Western Michigan University

Follow this and additional works at: <https://scholarworks.wmich.edu/pure>



Part of the Geology Commons

WMU ScholarWorks Citation

MGRRE, "MGRRE_PureOilScoutTickets_Memphis Village_unk_unk" (2021). *Legacy Scout Tickets from Pure Oil Company*. 4719.

<https://scholarworks.wmich.edu/pure/4719>

This Document is brought to you for free and open access via ScholarWorks at WMU. It has been accepted for inclusion in Legacy Scout Tickets from Pure Oil Company by an authorized administrator of ScholarWorks at WMU. See the National Digital Catalogue - Science Base Catalogue for more collections submitted by MGRRE.



MGRRE_PureOilScoutTickets_Memphis Village_unk_unk

API unk

Permit Number unk

Lease Name Memphis Village

Well Number unk

County Macomb

Township 05N

Range 14E

Section 2

2021 DEQ or Pure co_name Unknown

Pure Number 4

Latitude 42.8896499

Longitude -82.7683899

THE PURE OIL COMPANY

LOCATION REPORT

No. **4**DATE **7-13-34**STATE **Michigan** COUNTY **Macomb** DIST. **Richman** TWP. **Richman** SEC. **2** TOWN **5N** RANGE **14E**WELL No. _____ (SERIAL No. **4**) FARM **Memphis Village** ACRES _____NAME OF STREAM OR WATERS _____ QUADRANGLE **NE-NW**OPERATOR _____ MAP **Richman Township, Macomb County****Richman Twp. - Macomb Co.**

Feet from North Line of Farm

" " East " " "

" " South " " "

" " West " " "

Feet from North Line of Section

" " East " " "

" " South " " "

" " West " " "

LEGEND

O LOCATION

① RIG

⊕ DRILLING

⊗ GAS WELL

● OIL WELL

⬮ SMALL OIL WELL

⬮ DRY HOLE

⬮ DRY SHOWING OIL

⬮ DRY SHOWING GAS

⬮ ABANDONED LOCATION

⬮ ABANDONED GAS WELL

⬮ ABANDONED OIL WELL

NOTE: Below make tracing from map, (when no map is obtainable make sketch) showing farm, center of section, this location with measurements and also wells, dry holes, or other locations in the vicinity of this location. Make copy to keep for reference and send original to Columbus office.

Elev. 755

(Typed Log)

Berea 540-675'

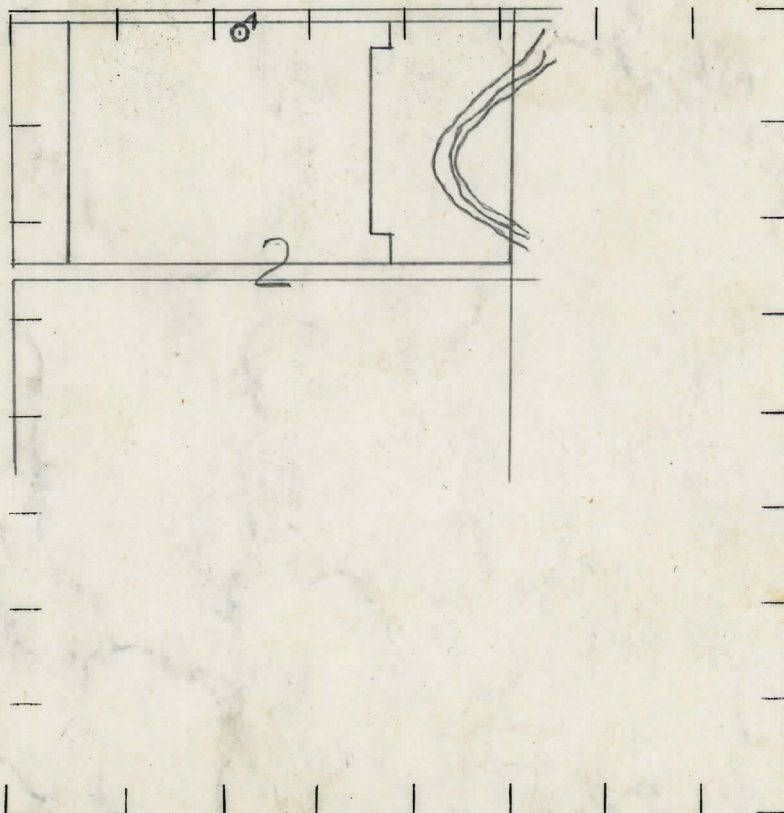
T.D. 675'

(Typed log)

Elevation 755'

Berea 540-675'

Total Depth 675'



REMARKS:

SIGNED

Superintendent or Foreman.