



Western Michigan University
ScholarWorks at WMU

Legacy Scout Tickets from Pure Oil Company

8-20-2021

MGRRE_PureOilScoutTickets_New Baltimore Well_unk_unk

MGRRE

Western Michigan University

Follow this and additional works at: <https://scholarworks.wmich.edu/pure>



Part of the Geology Commons

WMU ScholarWorks Citation

MGRRE, "MGRRE_PureOilScoutTickets_New Baltimore Well_unk_unk" (2021). *Legacy Scout Tickets from Pure Oil Company*. 4720.

<https://scholarworks.wmich.edu/pure/4720>

This Document is brought to you for free and open access via ScholarWorks at WMU. It has been accepted for inclusion in Legacy Scout Tickets from Pure Oil Company by an authorized administrator of ScholarWorks at WMU. See the National Digital Catalogue - Science Base Catalogue for more collections submitted by MGRRE.



MGRRE_PureOilScoutTickets_New Baltimore Well_unk_unk

API unk

Permit Number unk

Lease Name New Baltimore Well

Well Number unk

County Macomb

Township 03N

Range 14E

Section 13

2021 DEQ or Pure co_name Swift, C. M. (owner)

Pure Number 5

Latitude 42.6858343

Longitude -82.7376183

THE PURE OIL COMPANY

LOCATION REPORT

No. 5

DATE 7-13-34

STATE Michigan COUNTY Macomb DIST. TWP. Chesterfield SEC. 13 TOWN 3N RANGE 14E

WELL No. (SERIAL No. 5) FARM New Baltimore Well ACRES

NAME OF STREAM OR WATERS QUADRANGLE NE-SE

OPERATOR C. M. Swift (owner) MAP Chesterfield Township, Macomb County

Feet from North Line of Farm

" " East " " "

" " South " " "

" " West " " "

Feet from North Line of Section

-100- " " East " " "

2000- " " South " " "

" " West " " "

LEGEND

O LOCATION

① RIG

⊕ DRILLING

⊗ GAS WELL

● OIL WELL

⦿ SMALL OIL WELL

⦿ DRY HOLE

⦿ DRY SHOWING OIL

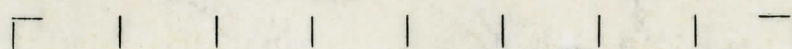
⦿ DRY SHOWING GAS

⦿ ABANDONED LOCATION

⦿ ABANDONED GAS WELL

⦿ ABANDONED OIL WELL

NOTE: Below make tracing from map, (when no map is obtainable make sketch) showing farm, center of section, this location with measurements and also wells, dry holes, or other locations in the vicinity of this location. Make copy to keep for reference and send original to Columbus office.



N



Pub. #14 - Pp. 115

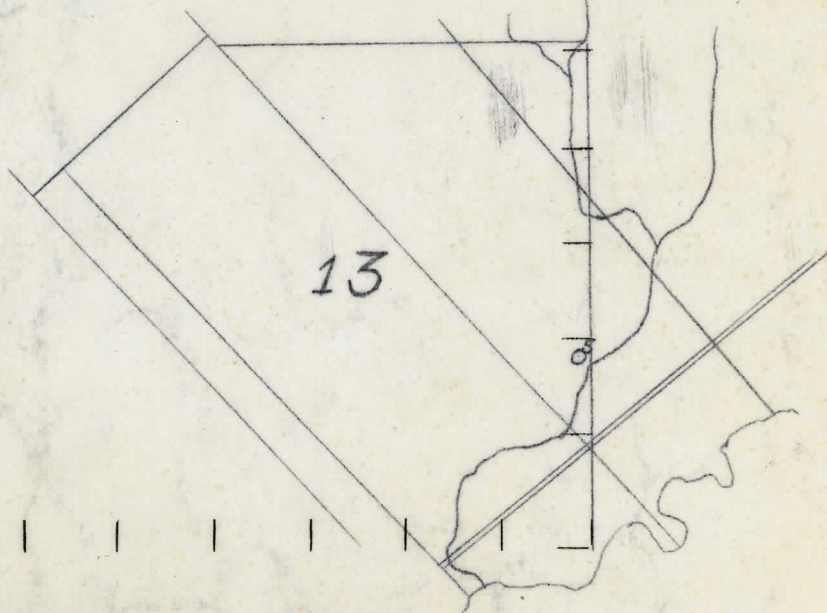
Elevation 588'

Drift 120'

Traverse 460-490(+128)

Dundee 690-820(-102)

Total Depth 1640'



REMARKS:

SIGNED

R. L. Yeager
Superintendent or Foreman.