



Legacy Scout Tickets from Pure Oil Company

8-20-2021

MGRRE_PureOilScoutTickets_Olympia well (Mt. Clemens city)_unk_unk

MGRRE

Western Michigan University

Follow this and additional works at: <https://scholarworks.wmich.edu/pure>



Part of the Geology Commons

WMU ScholarWorks Citation

MGRRE, "MGRRE_PureOilScoutTickets_Olympia well (Mt. Clemens city)_unk_unk" (2021). *Legacy Scout Tickets from Pure Oil Company*. 4721.

<https://scholarworks.wmich.edu/pure/4721>

This Document is brought to you for free and open access via ScholarWorks at WMU. It has been accepted for inclusion in Legacy Scout Tickets from Pure Oil Company by an authorized administrator of ScholarWorks at WMU. See the National Digital Catalogue - Science Base Catalogue for more collections submitted by MGRRE.



MGRRE_PureOilScoutTickets_Olympia well (Mt. Clemens city)_unk_unk

API unk

Permit Number unk

Lease Name Olympia well (Mt. Clemens city)

Well Number unk

County Macomb

Township 02N

Range 13E

Section 14

2021 DEQ or Pure co_name Unknown

Pure Number 6

Latitude 42.5929474

Longitude -82.8862344

THE PURE OIL COMPANY

LOCATION REPORT

No. 6

DATE: 7-14-34

STATE Michigan COUNTY Macomb DIST. Clinton TWP. Clinton SEC. 14 TOWN 2N RANGE 13E

WELL No. (SERIAL No. 6) FARM PREC. Olympia Well (Mt. Clemens City) ACRES

NAME OF STREAM OR WATERS QUADRANGLE NW-NE-NE NW-NE-NE

OPERATOR MAP Clinton Township, Macomb County

Feet from North Line of Farm Clinton Twp. - Macomb Co.

Feet from North Line of Section

East South West

1000 1000 Feet from North Line of Section

1940 1940 East South West

1940 1940 East South West

1940 1940 East South West

1940 1940 East South West

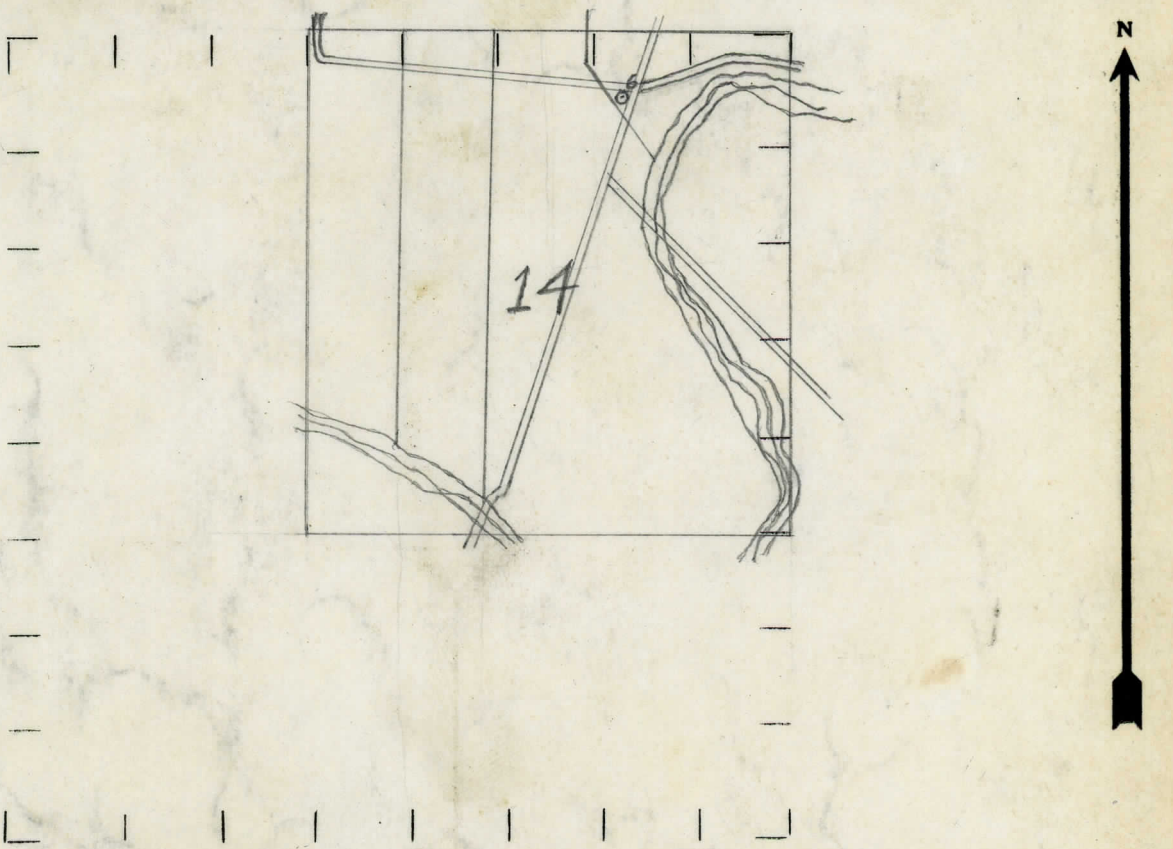
LEGEND

- O LOCATION
DRY HOLE
RIG
DRY SHOWING OIL
DRILLING
DRY SHOWING GAS
GAS WELL
ABANDONED LOCATION
OIL WELL
ABANDONED GAS WELL
SMALL OIL WELL
ABANDONED OIL WELL

NOTE: Below make tracing from map, (when no map is obtainable make sketch) showing farm, center of section, this location with measurements and also wells, dry holes, or other locations in the vicinity of this location. Make copy to keep for reference and send original to Columbus office.

Elev. 612'
Pub. 24 Pp 232
Typed Log
Traverse 254-430'
Dundee 430-900'
T.D. 1262'

Elevation 612'
Pub.#24 - Pp. 252
Traverse 254-430'
Dundee 430-900'
Total Depth 1262'



REMARKS:

SIGNED R.L. Yragsu Superintendent or Foreman.