



Western Michigan University
ScholarWorks at WMU

Legacy Scout Tickets from Pure Oil Company

8-20-2021

MGRRE_PureOilScoutTickets_Spencer Bros_unk_unk

MGRRE

Western Michigan University

Follow this and additional works at: <https://scholarworks.wmich.edu/pure>



Part of the Geology Commons

WMU ScholarWorks Citation

MGRRE, "MGRRE_PureOilScoutTickets_Spencer Bros_unk_unk" (2021). *Legacy Scout Tickets from Pure Oil Company*. 4723.

<https://scholarworks.wmich.edu/pure/4723>

This Document is brought to you for free and open access via ScholarWorks at WMU. It has been accepted for inclusion in Legacy Scout Tickets from Pure Oil Company by an authorized administrator of ScholarWorks at WMU. See the National Digital Catalogue - Science Base Catalogue for more collections submitted by MGRRE.



MGRRE_PureOilScoutTickets_Spencer Bros_unk_unk

API unk

Permit Number unk

Lease Name Spencer Bros

Well Number unk

County Macomb

Township 01N

Range 13E

Section 17

2021 DEQ or Pure co_name Roseville Village

Pure Number 8

Latitude 42.5022242

Longitude -82.937936

THE PURE OIL COMPANY

LOCATION REPORT

No. 8

DATE 7-14-34
 STATE Michigan COUNTY Macomb DIST. Erin TWP. Erin SEC. 17 TOWN 1N RANGE 13E
 WELL No. (SERIAL No. 8) FARM Spencer Bros Spencer Bros. ACRES

NAME OF STREAM OR WATERS _____ QUADRANGLE SW-SW-SE SW-SW-SE

OPERATOR Roseville Village MAP Erin Township, Macomb County
Erin Twp - Macomb Co.

Feet from North Line of Farm
 " " East " " "
 " " South " " "
 " " West " " "

Feet from North Line of Section
2300' 2300' " " East " " "
300 300 " " South " " "
 " " West " " "

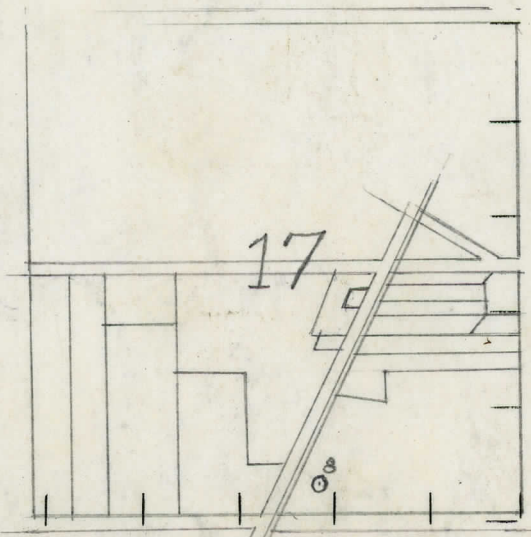
LEGEND

- LOCATION
- ① RIG
- ⊕ DRILLING
- ⊛ GAS WELL
- OIL WELL
- ⊙ SMALL OIL WELL
- ⊛ DRY HOLE
- ⊕ DRY SHOWING OIL
- ⊛ DRY SHOWING GAS
- ⊙ ABANDONED LOCATION
- ⊛ ABANDONED GAS WELL
- ⊙ ABANDONED OIL WELL

NOTE: Below make tracing from map, (when no map is obtainable make sketch) showing farm, center of section, this location with measurements and also wells, dry holes, or other locations in the vicinity of this location. Make copy to keep for reference and send original to Columbus office.

Elev. 615
 Pleistocene 0-40'
 Antrim Shale 40-85'
 Traverse
 Lime 85-115'
 Shale 115-225'
 Dun. Limestone 235-460'
 T.D. 460

Packet of Gas, fresh
 4' salt water jet rising
 50 ft. in the air
 Elevation 615'
 Pleistocene 0-40'
 Antrim Shale 40-85'
 Traverse:
 Lime 85-115'
 Shale 115-225'
 Dundee Limestone 235-460'
 Total Depth 460'
 Pocket of Gas, Fresh & Salt Water,
 jet rising 50' in air.



REMARKS: _____

SIGNED R. H. Neager
 Superintendent or Foreman.