



Western Michigan University
ScholarWorks at WMU

Legacy Scout Tickets from Pure Oil Company

8-20-2021

MGRRE_PureOilScoutTickets_Coulon, O._3_21099004550000

MGRRE

Western Michigan University

Follow this and additional works at: <https://scholarworks.wmich.edu/pure>



Part of the Geology Commons

WMU ScholarWorks Citation

MGRRE, "MGRRE_PureOilScoutTickets_Coulon, O._3_21099004550000" (2021). *Legacy Scout Tickets from Pure Oil Company*. 4728.

<https://scholarworks.wmich.edu/pure/4728>

This Document is brought to you for free and open access via ScholarWorks at WMU. It has been accepted for inclusion in Legacy Scout Tickets from Pure Oil Company by an authorized administrator of ScholarWorks at WMU. See the National Digital Catalogue - Science Base Catalogue for more collections submitted by MGRRE.



MGRRE_PureOilScoutTickets_Coulon, O._3_21099004550000

API 21099004550000

Permit Number 455

Lease Name Coulon, O.

Well Number 3

County Macomb

Township 02N

Range 13E

Section 4

2021 DEQ or Pure co_name St. Clair Oil and Gas Corporation

Pure Number 14

Latitude 42.61803

Longitude -82.93191

THE PURE OIL COMPANY
LOCATION REPORT

No. 14

DATE 3-18-29
 STATE Michigan COUNTY Macomb DIST. Clinton SEC. 4 TOWN 2N RANGE 13E
 WELL No. 3 (SERIAL No. 14) FARM Otto Coulton ACRES

NAME OF STREAM OR WATERS QUADRANGLE N 1/2 S 1/4
 OPERATOR St. Clair Oil Co. MAP Macomb - 2 1/2" = 1 Mile

Feet from North Line of Farm

" " East " " "
185' " " South " " "
350' " " West " " "

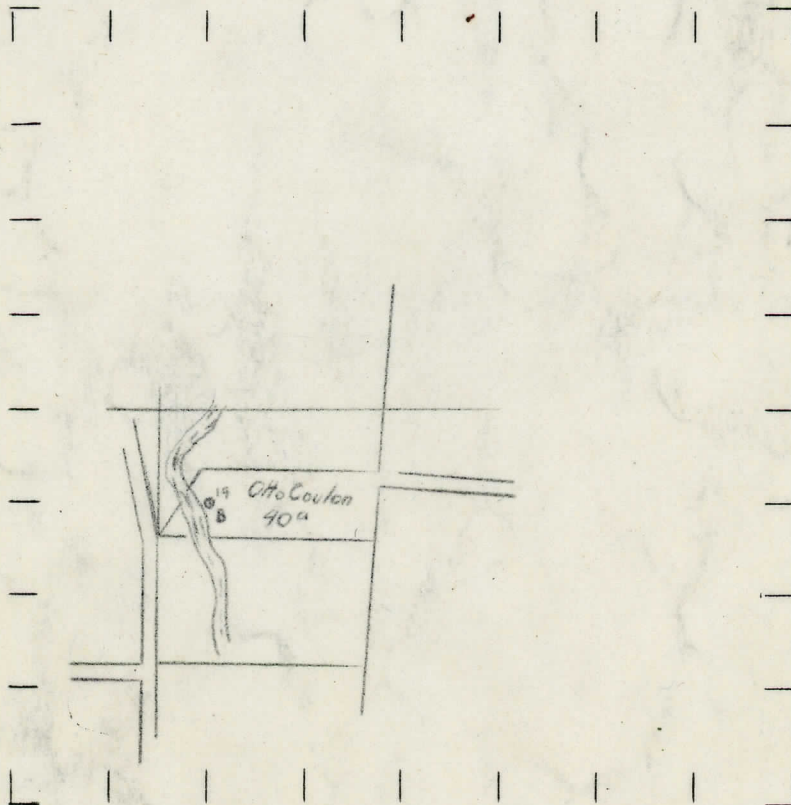
Feet from North Line of Section

" " East " " "
1505' " " South " " "
350' " " West " " "

LEGEND

- | | |
|------------------|----------------------|
| ○ LOCATION | ⊕ DRY HOLE |
| ① RIG | ⊕ DRY SHOWING OIL |
| ⊕ DRILLING | ⊕ DRY SHOWING GAS |
| ⊕ GAS WELL | ⊕ ABANDONED LOCATION |
| ● OIL WELL | ⊕ ABANDONED GAS WELL |
| ⊕ SMALL OIL WELL | ⊕ ABANDONED OIL WELL |

NOTE: Below make tracing from map, (when no map is obtainable make sketch) showing farm, center of section, this location with measurements and also wells, dry holes, or other locations in the vicinity of this location. Make copy to keep for reference and send original to Columbus office.



REMARKS:

SIGNED

Superintendent or Foreman.

