



Western Michigan University
ScholarWorks at WMU

Legacy Scout Tickets from Pure Oil Company

8-20-2021

MGRRE_PureOilScoutTickets_Blaissdell_1_21099005950000

MGRRE

Western Michigan University

Follow this and additional works at: <https://scholarworks.wmich.edu/pure>



Part of the Geology Commons

WMU ScholarWorks Citation

MGRRE, "MGRRE_PureOilScoutTickets_Blaissdell_1_21099005950000" (2021). *Legacy Scout Tickets from Pure Oil Company*. 4730.

<https://scholarworks.wmich.edu/pure/4730>

This Document is brought to you for free and open access via ScholarWorks at WMU. It has been accepted for inclusion in Legacy Scout Tickets from Pure Oil Company by an authorized administrator of ScholarWorks at WMU. See the National Digital Catalogue - Science Base Catalogue for more collections submitted by MGRRE.



MGRRE_PureOilScoutTickets_Blaisdell_1_21099005950000

API 21099005950000

Permit Number 595

Lease Name Blaisdell

Well Number 1

County Macomb

Township 02N

Range 13E

Section 5

2021 DEQ or Pure co_name St. Clair Oil and Gas Corporation

Pure Number 16

Latitude 42.62268

Longitude -82.934

THE PURE OIL COMPANY

DATE May 9th, 1929.

LOCATION REPORT

No. 16STATE Michigan COUNTY Macomb DIST. Clinton SEC. 5 TOWN 2 N RANGE 13 E
TWP. Clinton PREC. BlaisdellWELL No. 1 (SERIAL No. 16) FARM Blaisdell ACRESNAME OF STREAM OR WATERS QUADRANGLE Pt. NE 1/4 E. of RoadOPERATOR St. Clair Oil Company MAP Macomb Co., Clinton Twp.

Feet from North Line of Farm

200'" " East " of Road330'

" " South " " "

" " West " " "

Feet from North Line of Section

" " East " " "

" " South " " "

" " West " " "

LEGEND

O LOCATION

① RIG

⊕ DRILLING

⊗ GAS WELL

● OIL WELL

⊙ SMALL OIL WELL

⊙ DRY HOLE

⊙ DRY SHOWING OIL

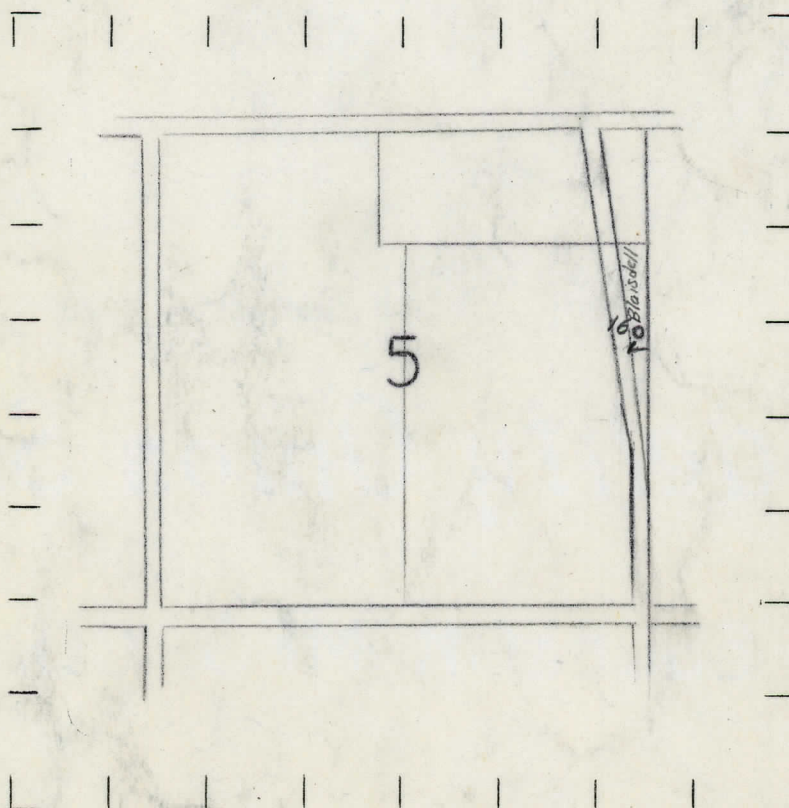
⊙ DRY SHOWING GAS

⊙ ABANDONED LOCATION

⊙ ABANDONED GAS WELL

⊙ ABANDONED OIL WELL

NOTE: Below make tracing from map, (when no map is obtainable make sketch) showing farm, center of section, this location with measurements and also wells, dry holes, or other locations in the vicinity of this location. Make copy to keep for reference and send original to Columbus office.



REMARKS:

SIGNED

Superintendent or Foreman.

No. -16-

SUPT. OR FOREMAN