



Western Michigan University  
ScholarWorks at WMU

---

Legacy Scout Tickets from Pure Oil Company

---

8-20-2021

**MGRRE\_PureOilScoutTickets\_Krantz, Gregory,  
Estate\_1\_21099012130000**

MGRRE  
*Western Michigan University*

Follow this and additional works at: <https://scholarworks.wmich.edu/pure>



Part of the Geology Commons

---

#### WMU ScholarWorks Citation

MGRRE, "MGRRE\_PureOilScoutTickets\_Krantz, Gregory, Estate\_1\_21099012130000" (2021). *Legacy Scout Tickets from Pure Oil Company*. 4731.  
<https://scholarworks.wmich.edu/pure/4731>

This Document is brought to you for free and open access via ScholarWorks at WMU. It has been accepted for inclusion in Legacy Scout Tickets from Pure Oil Company by an authorized administrator of ScholarWorks at WMU. See the National Digital Catalogue - Science Base Catalogue for more collections submitted by MGRRE.



---

MGRRE\_PureOilScoutTickets\_Krantz, Gregory, Estate\_1\_21099012130000

API 21099012130000

Permit Number 1213

Lease Name Krantz, Gregory, Estate

Well Number 1

County Macomb

Township 03N

Range 14E

Section 28

2021 DEQ or Pure co\_name Brown, H. H.

Pure Number 17

Latitude 42.6500916

Longitude -82.8117285

DATE October 17, 1931

THE PURE OIL COMPANY

## LOCATION REPORT

No. 17

STATE Michigan COUNTY Macomb DIST. Chesterfield SEC. 28 TOWN 3-N RANGE 14-E  
 WELL No. 1 (SERIAL No. 17) FARM Gregory Krantz ACRES \_\_\_\_\_  
 NAME OF STREAM OR WATERS \_\_\_\_\_ QUADRANGLE Private Claim #196  
 OPERATOR H. H. Brown MAP Chesterfield Twp., Macomb County

Feet from North Line of Farm

" " East " " "

" " South " " "

" " West " " "

Feet from North Line of Section

" " East " " "

2015

" " South " " "

800

" " West " " "

## LEGEND

O LOCATION

① RIG

⊕ DRILLING

⊗ GAS WELL

● OIL WELL

⬮ SMALL OIL WELL

⬮ DRY HOLE

⬮ DRY SHOWING OIL

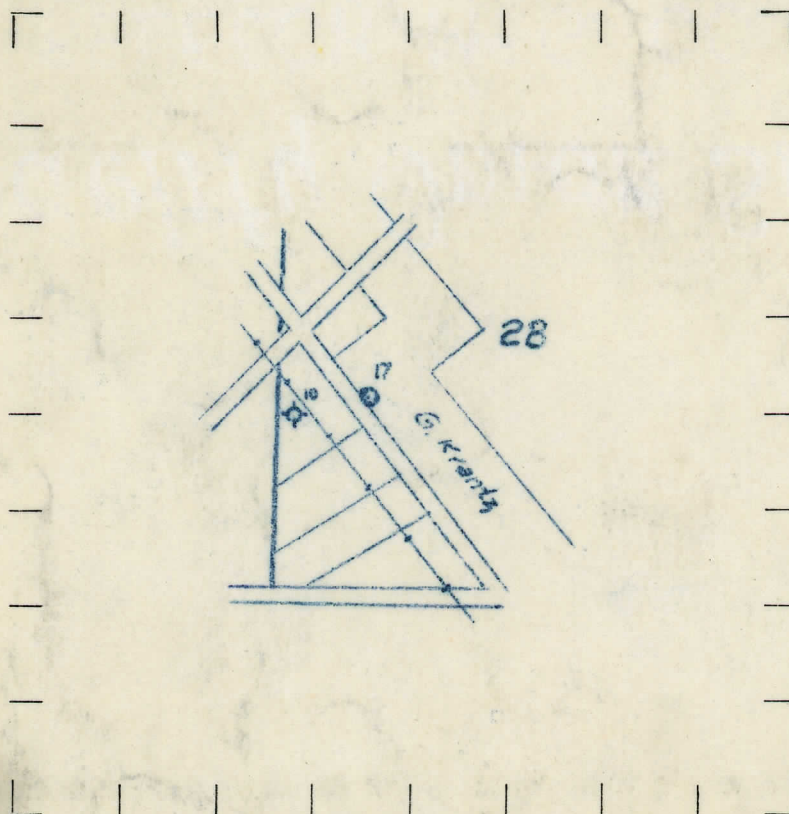
⬮ DRY SHOWING GAS

⬮ ABANDONED LOCATION

⬮ ABANDONED GAS WELL

⬮ ABANDONED OIL WELL

NOTE: Below make tracing from map, (when no map is obtainable make sketch) showing farm, center of section, this location with measurements and also wells, dry holes, or other locations in the vicinity of this location. Make copy to keep for reference and send original to Columbus office.



N

REMARKS:

SIGNED

Superintendent or Foreman.



