



Western Michigan University
ScholarWorks at WMU

Legacy Scout Tickets from Pure Oil Company

8-20-2021

MGRRE_PureOilScoutTickets_Bower, Louis E., et
al_1_21099013590000

MGRRE
Western Michigan University

Follow this and additional works at: <https://scholarworks.wmich.edu/pure>



Part of the Geology Commons

WMU ScholarWorks Citation

MGRRE, "MGRRE_PureOilScoutTickets_Bower, Louis E., et al_1_21099013590000" (2021). *Legacy Scout Tickets from Pure Oil Company*. 4734.
<https://scholarworks.wmich.edu/pure/4734>

This Document is brought to you for free and open access via ScholarWorks at WMU. It has been accepted for inclusion in Legacy Scout Tickets from Pure Oil Company by an authorized administrator of ScholarWorks at WMU. See the National Digital Catalogue - Science Base Catalogue for more collections submitted by MGRRE.



MGRRE_PureOilScoutTickets_Bower, Louis E., et al_1_21099013590000

API 21099013590000

Permit Number 1359

Lease Name Bower, Louis E., et al

Well Number 1

County Macomb

Township 03N

Range 14E

Section 29

2021 DEQ or Pure co_name Brown, H. H.

Pure Number 20

Latitude 42.6465601

Longitude -82.8168783

THE PURE OIL COMPANY

LOCATION REPORT

No. -20-

DATE 8-27-32STATE Michigan COUNTY Macomb DIST. Chesterfield TWP. Chesterfield SEC. 29 TOWN 3-N RANGE 14-EWELL No. 1 (SERIAL No. 20) FARM Louis E. Bower et al ACRES

NAME OF STREAM OR WATERS QUADRANGLE

OPERATOR H. H. Brown MAP

Feet from North Line of Farm

250 " " East " " "

225 " " South " " "

" " West " " "

Feet from North Line of Section

X 1225 " " East " " "

A 100 " " South " " "

" " West " " "

LEGEND

O LOCATION

① RIG

⊕ DRILLING

⊗ GAS WELL

● OIL WELL

⦿ SMALL OIL WELL

⦿ DRY HOLE

⦿ DRY SHOWING OIL

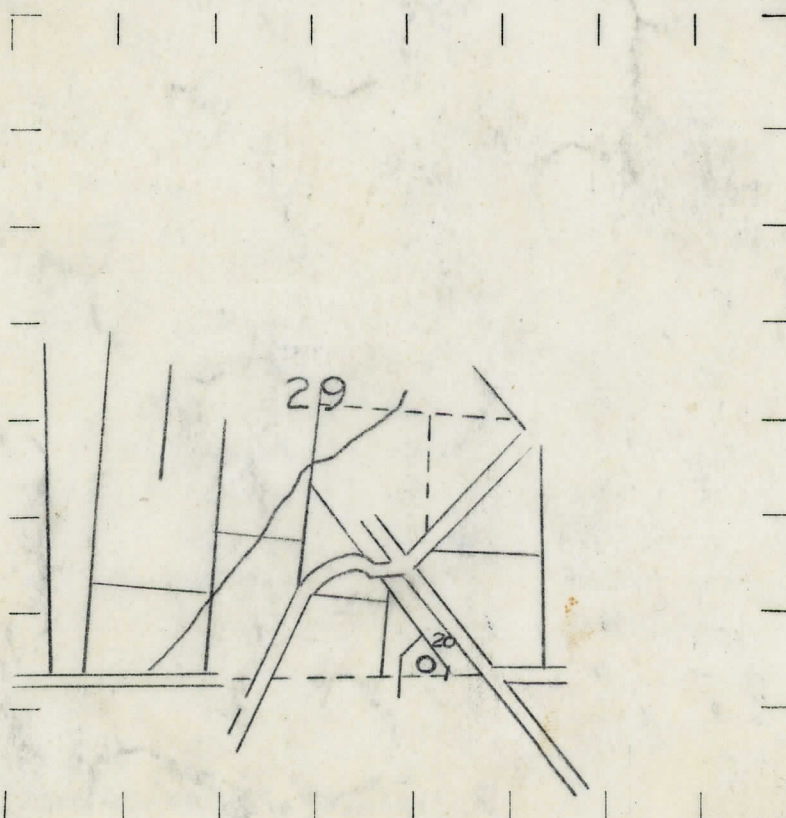
⦿ DRY SHOWING GAS

⦿ ABANDONED LOCATION

⦿ ABANDONED GAS WELL

⦿ ABANDONED OIL WELL

NOTE: Below make tracing from map, (when no map is obtainable make sketch) showing farm, center of section, this location with measurements and also wells, dry holes, or other locations in the vicinity of this location. Make copy to keep for reference and send original to Columbus office.



REMARKS:

SIGNED

Superintendent or Foreman.

THE PURE OIL COMPANY

DATE <u>11/17/33</u>		<u>Michigan Producing</u> DIVISION COMPLETION RECORD		No. <u>20</u>	
----------------------	--	--	--	---------------	--

STATE Michigan COUNTY Macomb DIST.
TWP. Chesterfield SEC. 29 TOWN 3 N RANGE 14 E

WELL No. 1 (SERIAL No. 20) FARM Louis E. Bower et al ACRES 1.00

NAME OF STREAM OR WATERS _____ QUADRANGLE _____

OPERATOR H. H. Brown MAP Chesterfield Township, Macomb County

LOCATION REPORT SENT IN (DATE) 8-27-33

WELL STARTED (DATE) 9-5-32 WELL COMPLETED (DATE) 11-15-33

ANNEXE

CASEWORK

DRY HOLE

1890

Elevation 592.3'

CROSS OUT THREE OF THE ABOVE
WELL RECORD

DATE OF SHOT _____ NUMBER OF QUARTS _____

1st 24 HOURS PRODUCTION	Dry Hole	BARRELS OR FEET

[illegible]

3rd " " " " " "

4th " " " " " "

5th " " " " " "

SAND AND CASING

[illegible]

REMARKS

Show Gas and Blk. Water 950'.

NOTE:—MAKE COPY TO KEEP FOR REFERENCE AND SEND ORIGINAL TO CHICAGO OFFICE. LIST MATERIAL CHARGEABLE TO WELL ON OTHER SIDE.

SIGNED

SUPT. OR FOREMAN

COMPLETION RECORD OF WELLS DRILLED BY OTHER OPERATORS

Michigan Producing Division

Date 8/29/35 No. 20
State Michigan County Macomb Dist. Twp. Chesterfield Sec. 29 Twp. 3N Rge. 13E
(Serial No.)
Well No. 1 (County No.) 20 Farm Louis E. Bower et al Acres
Operator H. H. Brown by Scouting Dept.
Information secured from
Date well started _____ Date well completed 8/18/35 Elevation 592.3'

PRODUCTION RECORD

1st 24 hours natural **Dry Hole**

2nd 24 hours natural

Date of shot No. of quarts From to From to

Date of acid No. of gallons

1st 24 hours after acid shot

2nd 24 hours after acid shot

FORMATION AND CASING RECORD

[illegible]

Remarks Additional information to our completion Record of 11/17/33.

Signed