



Western Michigan University
ScholarWorks at WMU

Legacy Scout Tickets from Pure Oil Company

8-20-2021

MGRRE_PureOilScoutTickets_Kandt Emil_1_21099035700000

MGRRE

Western Michigan University

Follow this and additional works at: <https://scholarworks.wmich.edu/pure>



Part of the Geology Commons

WMU ScholarWorks Citation

MGRRE, "MGRRE_PureOilScoutTickets_Kandt Emil_1_21099035700000" (2021). *Legacy Scout Tickets from Pure Oil Company*. 4737.

<https://scholarworks.wmich.edu/pure/4737>

This Document is brought to you for free and open access via ScholarWorks at WMU. It has been accepted for inclusion in Legacy Scout Tickets from Pure Oil Company by an authorized administrator of ScholarWorks at WMU. See the National Digital Catalogue - Science Base Catalogue for more collections submitted by MGRRE.



MGRRE_PureOilScoutTickets_Kandt Emil_1_21099035700000

API 21099035700000

Permit Number 3570

Lease Name Kandt Emil

Well Number 1

County Macomb

Township 03N

Range 13E

Section 33

2021 DEQ or Pure co_name Brown, H. H.

Pure Number 23

Latitude 42.62927

Longitude -82.92809

DATE October 1, 1936

LOCATION REPORT

No. 23

STATE Michigan COUNTY Macomb DIST. Macomb SEC. 33 TOWN 3 N RANGE 13 E

WELL No. 1 (SERIAL No. 23) FARM Emil Kandt ACRES

NAME OF STREAM OR WATERS QUADRANGLE C 34 SE SW

OPERATOR H. H. Brown Map Macomb Township, Macomb County

Feet from North Line of Farm

600

" " East " " "

300

" " South " " "

" " West " " "

Feet from North Line of Section

600

" " East " 1/4 "

300

" " South " " "

" " West " " "

*1360 ft.
8 1/4 = 186 77308 in Ant set 50, used
Ant 260-308*

LEGEND

○ LOCATION

⊕ RIG

⊕ DRILLING

☼ GAS WELL

● OIL WELL

⬮ SMALL OIL WELL

⊖ DRY HOLE

⬮ DRY SHOWING OIL

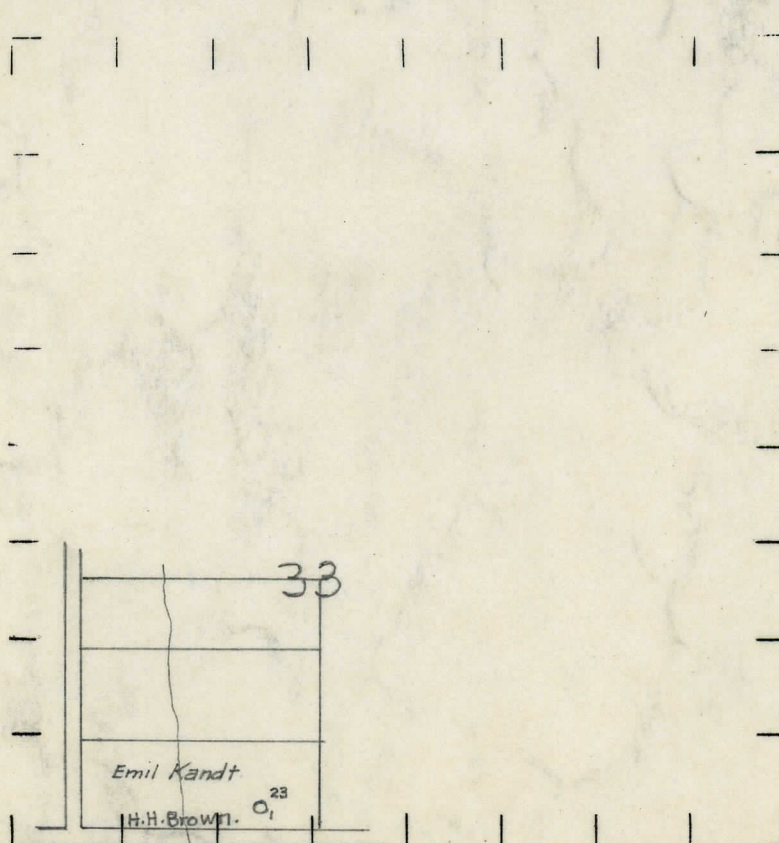
☼ DRY SHOWING GAS

⊖ ABANDONED LOCATION

☼ ABANDONED GAS WELL

⬮ ABANDONED OIL WELL

NOTE: Below make tracing from map, (when no map is obtainable make sketch) showing farm, center of section, this location with measurements and also wells, dry holes, or other locations in the vicinity of this location.



REMARKS:

SIGNED

Superintendent or Foreman.

Michigan Producing Division

No. 23

Well No. **1** (County No.) **23** Farm **Emil Kandt** Acres

Date well started 9-20-36 Date well completed 10-1-36 Elevation

2nd 24 hours natural

[illegible]

shot

1st 24 hours after acid

shot

2nd 24 hours after acid.....

[illegible]

Remarks

Signed G. W. Bell