



Western Michigan University  
ScholarWorks at WMU

---

Legacy Scout Tickets from Pure Oil Company

---

8-20-2021

**MGRRE\_PureOilScoutTickets\_Phyly, George\_1\_21099084220000**

MGRRE

*Western Michigan University*

Follow this and additional works at: <https://scholarworks.wmich.edu/pure>



Part of the Geology Commons

---

#### **WMU ScholarWorks Citation**

MGRRE, "MGRRE\_PureOilScoutTickets\_Phyly, George\_1\_21099084220000" (2021). *Legacy Scout Tickets from Pure Oil Company*. 4742.

<https://scholarworks.wmich.edu/pure/4742>

This Document is brought to you for free and open access via ScholarWorks at WMU. It has been accepted for inclusion in Legacy Scout Tickets from Pure Oil Company by an authorized administrator of ScholarWorks at WMU. See the National Digital Catalogue - Science Base Catalogue for more collections submitted by MGRRE.



---

**MGRRE\_PureOilScoutTickets\_Phyly, George\_1\_21099084220000**

API 21099084220000

Permit Number 8422

Lease Name Phyly, George

Well Number 1

County Macomb

Township 04N

Range 14E

Section 22

2021 DEQ or Pure co\_name Johnson, L. C. and Kellerman, H.

Pure Number 28

Latitude 42.75247

Longitude -82.77289

THE PURE OIL COMPANY

DATE February 12, 1941

## LOCATION REPORT

No. 28

STATE Michigan

COUNTY

Macomb

DIST

Lenox

TWP

Lenox

SEC

22

TOWN

4 N

RANGE 14 E

WELL No. 1 (SERIAL No. 228) FARM

PREC

George Pohly

ACRES

NAME OF STREAM OR WATERS

QUADRANGLE NE SE SE

OPERATOR L. C. Johnson &amp; H. Kellerman

Map

Lenox Township, Macomb County

L.C. Johnson &amp; H. Kellerman

Lenox - Macomb

Feet from North Line of Farm

990	990	"	"	East	"	"	"
660	660	"	"	South	"	"	"
		"	"	West	"	"	"

Feet from North Line of Section

330	330	"	"	East	"	1 1/4"
990	990	"	"	South	"	"
		"	"	West	"	"

## LEGEND

○ LOCATION

① RIG

⊕ DRILLING

☀ GAS WELL

● OIL WELL

● SMALL OIL WELL

⊙ DRY HOLE

● DRY SHOWING OIL

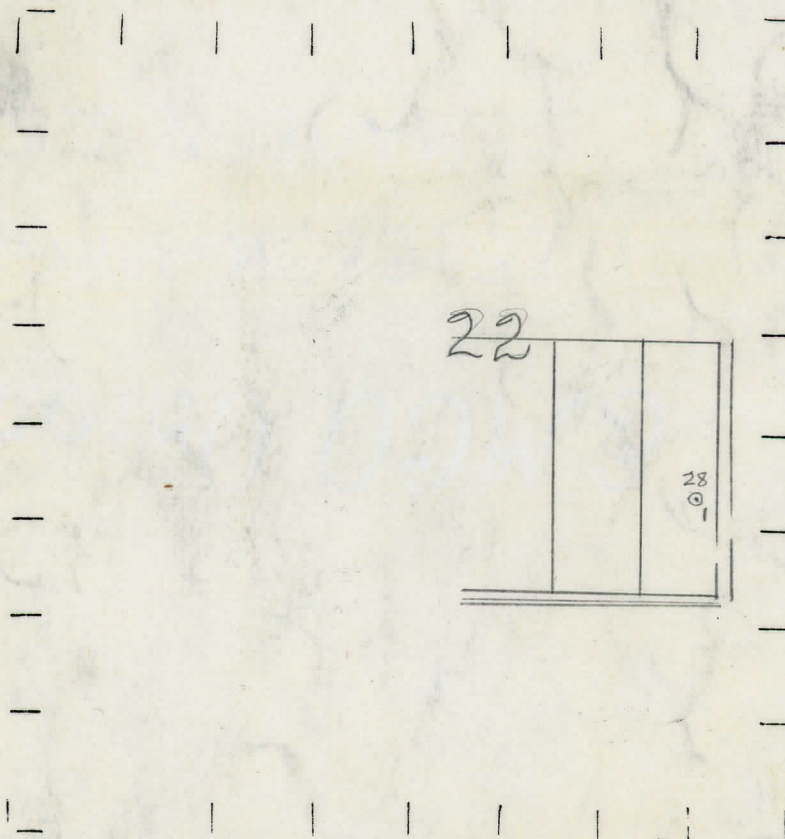
☀ DRY SHOWING GAS

⊙ ABANDONED LOCATION

☀ ABANDONED GAS WELL

● ABANDONED OIL WELL

NOTE: Below make tracing from map. (when no map is obtainable make sketch) showing farm, center of section, this location with measurements and also wells, dry holes, or other locations in the vicinity of this location.



REMARKS:

SIGNED

W

Superintendent or Foreman.

