



Western Michigan University
ScholarWorks at WMU

Legacy Scout Tickets from Pure Oil Company

8-20-2021

MGRRE_PureOilScoutTickets_Dow Marshall Brine - Meridian Group_20_None

MGRRE

Western Michigan University

Follow this and additional works at: <https://scholarworks.wmich.edu/pure>



Part of the Geology Commons

WMU ScholarWorks Citation

MGRRE, "MGRRE_PureOilScoutTickets_Dow Marshall Brine - Meridian Group_20_None" (2021). *Legacy Scout Tickets from Pure Oil Company*. 5132.
<https://scholarworks.wmich.edu/pure/5132>

This Document is brought to you for free and open access via ScholarWorks at WMU. It has been accepted for inclusion in Legacy Scout Tickets from Pure Oil Company by an authorized administrator of ScholarWorks at WMU. See the National Digital Catalogue - Science Base Catalogue for more collections submitted by MGRRE.



MGRRE_PureOilScoutTickets_Dow Marshall Brine - Meridian Group_20_None

API None

Permit Number None

Lease Name Dow Marshall Brine - Meridian Group

Well Number 20

County Midland

Township 13N

Range 01W

Section 3

2021 DEQ or Pure co_name Dow Chemical Company

Pure Number 19

Latitude 43.5460631

Longitude -84.4194798

THE PURE OIL COMPANY
LOCATION REPORT

No. 19

DATE _____

Nov. 16, 1929

STATE _____ COUNTY _____ DIST TWP _____ SEC _____ TOWN _____ RANGE _____

WELL No. Michigan (SERIAL No. _____) FARM Midland PREC. Porter 3 13N 1W ACRES _____

NAME OF STREAM OR WATERS 20 19 Dow Chemical Co. 6 Meridian Group QUADRANGLE _____

OPERATOR _____ MAP _____ Porter Twp. Midland Co.

Dow Chemical Company

Feet from North Line of Farm

“ “ East “ “ “

“ “ South “ “ “

“ “ West “ “ “

Feet from North Line of Section

“ “ East “ “ “

“ “ South “ “ “

1340'

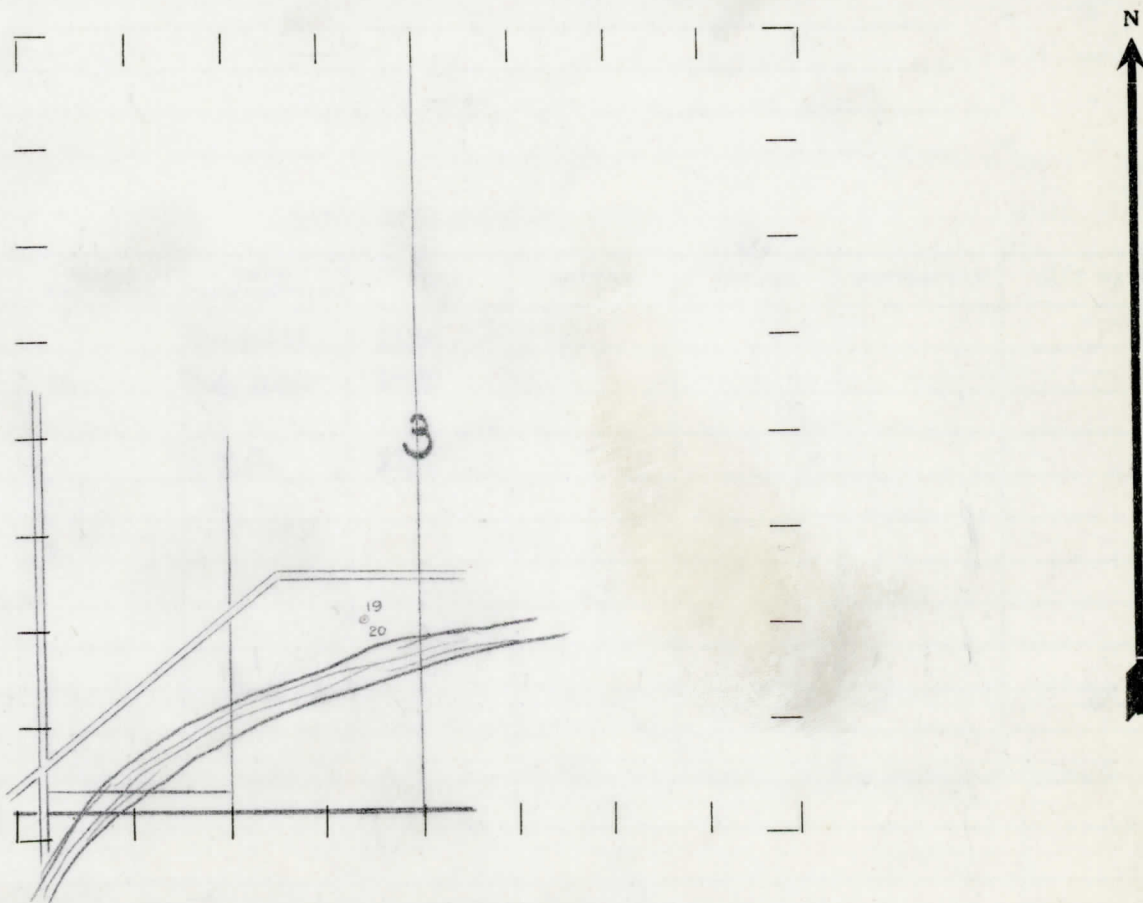
“ “ West “ “ “

2200'

LEGEND

- LOCATION
- ⊙ RIG
- ⊕ DRILLING
- ⊗ GAS WELL
- OIL WELL
- ⊖ SMALL OIL WELL
- ◇ DRY HOLE
- ◆ DRY SHOWING OIL
- ⊗ DRY SHOWING GAS
- ⊖ ABANDONED LOCATION
- ⊗ ABANDONED GAS WELL
- ⊖ ABANDONED OIL WELL

NOTE: Below make tracing from map, (when no map is obtainable make sketch) showing farm, center of section, this location with measurements and also wells, dry holes, or other locations in the vicinity of this location. Make copy to keep for reference and send original to Columbus office.



REMARKS:

Dow Chemical Company Owns 1Ac. Tract In Fee.

SIGNED _____

Superintendent or Foreman.

Michigan Producing DIVISION
COMPLETION RECORD No. 19

DATE Dec. 14th, 1929.
 STATE Michigan COUNTY Midland DIST TWP. Porter SEC. 3 TOWN 13 N RANGE 1 W
 WELL No. 20 (SERIAL No. 19) FARM Dow Chemical Co., Meridian Group ACRES _____
 NAME OF STREAM OR WATERS _____ QUADRANGLE _____

OPERATOR Dow Chemical Company MAP Porter Twp., Midland Co.

LOCATION REPORT SENT IN (DATE) 11/23/29.

WELL STARTED (DATE) Unknown WELL COMPLETED (DATE) Dec. 14th, 1929.

OIL WELL
 GAS WELL
 DRY HOLE
 ABANDONED WELL

CROSS OUT THREE OF THE ABOVE
 WELL RECORD

| DATE OF SHOT | NUMBER OF QUARTS | BARRELS OR FEET |
|-------------------------|------------------|-----------------|
| 1st 24 HOURS PRODUCTION | | |
| 2nd " " " | | |
| 3rd " " " | | |
| 4th " " " | | |
| 5th " " " | | |

SAND AND CASING

| CASING SIZE | WEIGHT | CASING Feet Inches | SAND Name and Nature | TOP | BOTTOM | TOP PAY | BOTTOM PAY | SALT WATER |
|-------------|--------|--------------------|----------------------|-------|--------|---------|------------|------------|
| | | | Marshall | 1115 | | | | |
| | | | Red rock | 1190 | | | | |
| | | | T.D. | 1190' | | | | |
| | | | | | | | | |
| | | | | | | | | |
| | | | | | | | | |
| | | | | | | | | |
| | | | | | | | | |

REMARKS Brine well.