



Western Michigan University  
ScholarWorks at WMU

---

Legacy Scout Tickets from Pure Oil Company

---

8-20-2021

## MGRRE\_PureOilScoutTickets\_Dow Marshall Brine - Jasper Group\_33\_None

MGRRE

*Western Michigan University*

Follow this and additional works at: <https://scholarworks.wmich.edu/pure>



Part of the Geology Commons

---

### WMU ScholarWorks Citation

MGRRE, "MGRRE\_PureOilScoutTickets\_Dow Marshall Brine - Jasper Group\_33\_None" (2021). *Legacy Scout Tickets from Pure Oil Company*. 5135.  
<https://scholarworks.wmich.edu/pure/5135>

This Document is brought to you for free and open access via ScholarWorks at WMU. It has been accepted for inclusion in Legacy Scout Tickets from Pure Oil Company by an authorized administrator of ScholarWorks at WMU. See the National Digital Catalogue - Science Base Catalogue for more collections submitted by MGRRE.



---

**MGRRE\_PureOilScoutTickets\_Dow Marshall Brine - Jasper Group\_33\_None**

API None

Permit Number None

Lease Name Dow Marshall Brine - Jasper Group

Well Number 33

County Midland

Township 13N

Range 01W

Section 17

2021 DEQ or Pure co\_name Dow Chemical Company

Pure Number 22

Latitude 43.5172394

Longitude -84.4591864

DATE Nov. 22nd, 1929

THE PURE OIL COMPANY  
LOCATION REPORT

No. 22

STATE Michigan COUNTY Midland DIST Porter TWP. Porter SEC. 17 TOWN 13 N RANGE 1 W

WELL No. 33 (SERIAL No. 22) FARM Down Chemical Company, Jasper Group ACRES

NAME OF STREAM OR WATERS \_\_\_\_\_ QUADRANGLE NE<sup>1</sup>/<sub>4</sub> - SW<sup>1</sup>/<sub>4</sub>

OPERATOR Dow Chemical Company MAP Porter Township, Midland County

Feet from North Line of Farm

----- " " East " " "

----- " " South " " "

----- " " West " " "

Feet from North Line of Section

----- " " East " " "

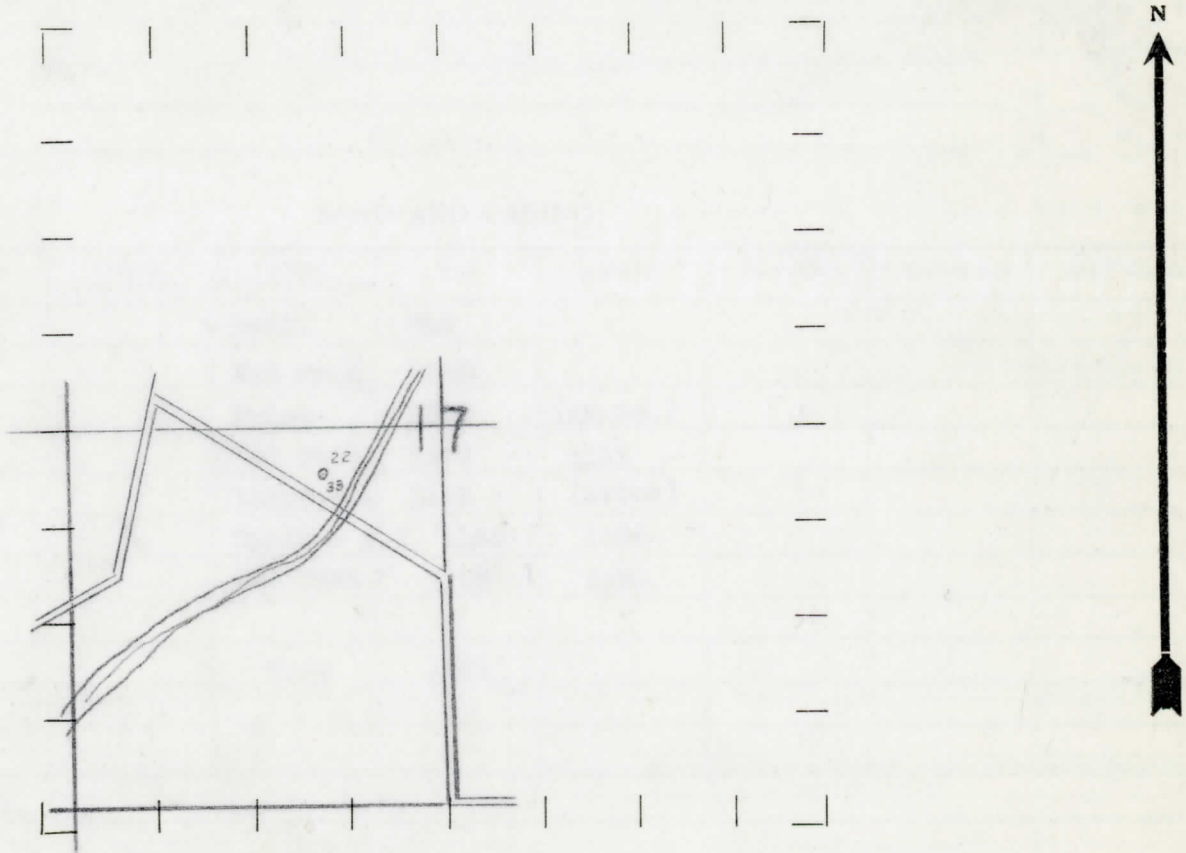
2260 ----- " " South " " "

1750 ----- " " West " " "

LEGEND

- LOCATION
- ① RIG
- ⊕ DRILLING
- ⊙ GAS WELL
- OIL WELL
- ⊖ SMALL OIL WELL
- ◇ DRY HOLE
- ◆ DRY SHOWING OIL
- ⊙ DRY SHOWING GAS
- ⊖ ABANDONED LOCATION
- ⊙ ABANDONED GAS WELL
- ⊖ ABANDONED OIL WELL

NOTE: Below make tracing from map, (when no map is obtainable make sketch) showing farm, center of section, this location with measurements and also wells, dry holes, or other locations in the vicinity of this location. Make copy to keep for reference and send original to Columbus office.



REMARKS: Dow Chemical Company owns 1 acre tract in fee.

SIGNED

Superintendent or Foreman.

Michigan Producing DIVISION  
 DATE Dec. 14th, 1929. COMPLETION RECORD No. -22-

STATE Michigan COUNTY Midland DIST. TWP. Porter SEC. 17 TOWN 13 N RANGE 1 W  
 PREC.

WELL No. 33 (SERIAL No. 22) FARM Dow Chemical Company, Jasper Group ACRES

NAME OF STREAM OR WATERS QUADRANGLE

OPERATOR Dow Chemical Company MAP Porter Township, Midland Co.

LOCATION REPORT SENT IN (DATE) November 23rd, 1929.

WELL STARTED (DATE) Unknown WELL COMPLETED (DATE) Dec. 14th, 1929.

OIL WELL     
  GAS WELL     
  DRY HOLE     
  ABANDONED WELL

CROSS OUT THREE OF THE ABOVE  
 WELL RECORD

DATE OF SHOT	NUMBER OF QUARTS	BARRELS OR FEET
1st 24 HOURS PRODUCTION		
2nd " " "		
3rd " " "		
4th " " "		
5th " " "		

SAND AND CASING

CASING SIZE	WEIGHT	CASING Feet Inches	SAND Name and Nature	TOP	BOTTOM	TOP PAY	BOTTOM PAY	SALT WATER
			Drift	286				
			Red rock	1040				
			Brine	1060	(gr. ss.)			
			Red rock	1078	1113			
			White ss.	1113	(brine)			
			Shale & mud	1164	1195			
			Red rock	1195	1221			
			T.D.	1221'				

REMARKS Brine well.