



Western Michigan University  
ScholarWorks at WMU

---

Legacy Scout Tickets from Pure Oil Company

---

8-20-2021

## MGRRE\_PureOilScoutTickets\_Dow Marshall Brine - Jasper Group\_37\_None

MGRRE

*Western Michigan University*

Follow this and additional works at: <https://scholarworks.wmich.edu/pure>



Part of the Geology Commons

---

### WMU ScholarWorks Citation

MGRRE, "MGRRE\_PureOilScoutTickets\_Dow Marshall Brine - Jasper Group\_37\_None" (2021). *Legacy Scout Tickets from Pure Oil Company*. 5139.  
<https://scholarworks.wmich.edu/pure/5139>

This Document is brought to you for free and open access via ScholarWorks at WMU. It has been accepted for inclusion in Legacy Scout Tickets from Pure Oil Company by an authorized administrator of ScholarWorks at WMU. See the National Digital Catalogue - Science Base Catalogue for more collections submitted by MGRRE.



---

**MGRRE\_PureOilScoutTickets\_Dow Marshall Brine - Jasper Group\_37\_None**

API None

Permit Number None

Lease Name Dow Marshall Brine - Jasper Group

Well Number 37

County Midland

Township 13N

Range 02W

Section 26

2021 DEQ or Pure co\_name Dow Chemical Company

Pure Number 26

Latitude 43.4879779

Longitude -84.5185446

Form 24 10M 8-1-29 P100 E.P.Co.  
DATE Nov. 22nd, 1929

LOCATION REPORT

No. 26

STATE Michigan COUNTY Midland DIST. Jasper TWP. Jasper SEC. 26 TOWN 13 N RANGE 2 W

WELL No. 37 (SERIAL No. 26) FARM Dow Chemical Company, Jasper Group ACRES

NAME OF STREAM OR WATERS \_\_\_\_\_ QUADRANGLE NE<sup>1</sup>/<sub>4</sub> - NW<sup>1</sup>/<sub>4</sub>

OPERATOR Dow Chemical Company MAP Jasper Township, Midland County

\_\_\_\_\_ Feet from North Line of Farm

\_\_\_\_\_ " " East " " "

\_\_\_\_\_ " " South " " "

\_\_\_\_\_ " " West " " "

1100 Feet from North Line of Section

\_\_\_\_\_ " " East " " "

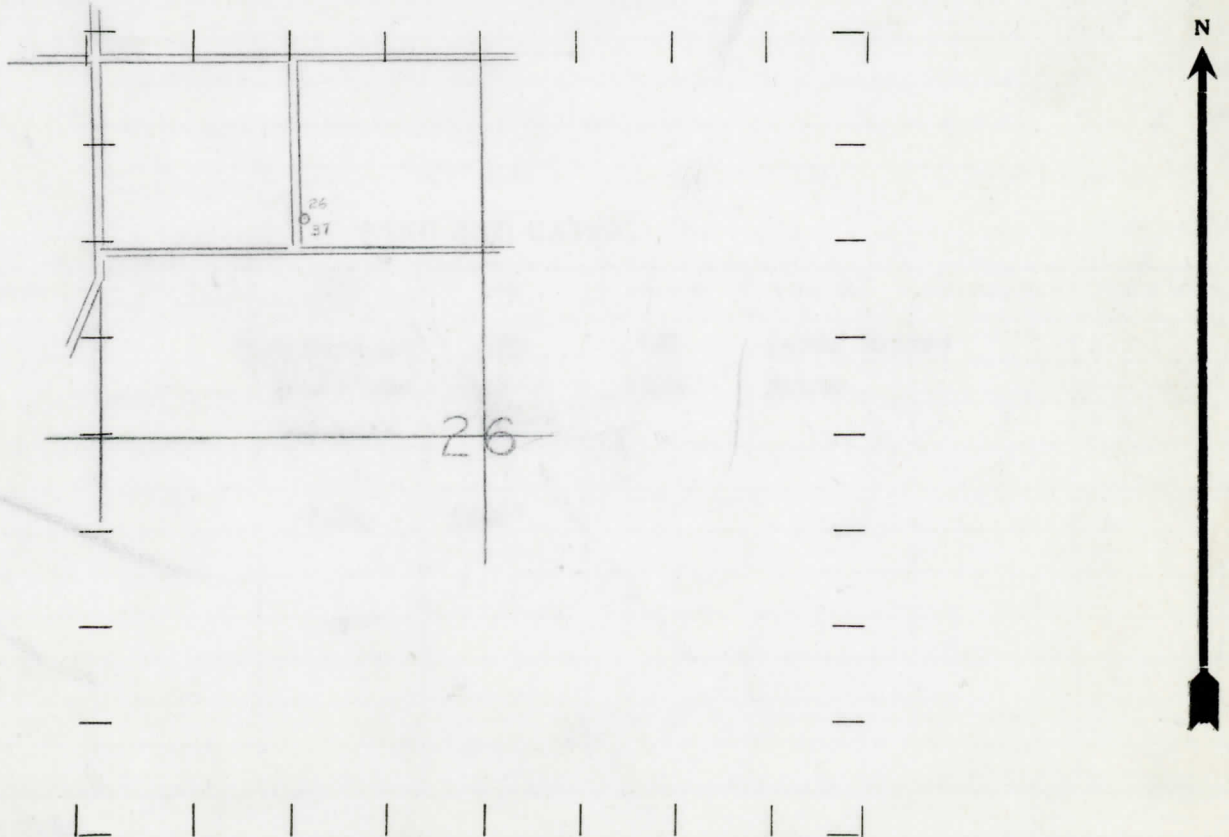
\_\_\_\_\_ " " South " " "

1370 " " West " " "

LEGEND

- LOCATION
- ⊕ RIG
- ⊕ DRILLING
- ⊗ GAS WELL
- OIL WELL
- ⬮ SMALL OIL WELL
- ⊗ DRY HOLE
- ⬮ DRY SHOWING OIL
- ⊗ DRY SHOWING GAS
- ⊗ ABANDONED LOCATION
- ⊗ ABANDONED GAS WELL
- ⬮ ABANDONED OIL WELL

NOTE: Below make tracing from map, (when no map is obtainable make sketch) showing farm, center of section, this location with measurements and also wells, dry holes, or other locations in the vicinity of this location. Make copy to keep for reference and send original to Columbus office.



REMARKS: Dow Chemical Company owns 1 acre tract in fee.

SIGNED

\_\_\_\_\_  
Superintendent or Foreman.

NAME OF STREAM OR WATERS \_\_\_\_\_  
 WELL No. 37 (SERIAL No. 26) FARM Dow Chemical Company, Jasper Group ACRES \_\_\_\_\_  
 DATE Dec. 14th, 1929. **COMPLETION RECORD** No. -26-

STATE Michigan COUNTY Midland DIST TWP. Jasper SEC. 26 TOWN 13 N RANGE 2 W

NAME OF STREAM OR WATERS \_\_\_\_\_ QUADRANGLE \_\_\_\_\_

OPERATOR Dow Chemical Company MAP Jasper Twp., Midland Co.

LOCATION REPORT SENT IN (DATE) 11/23/29.

WELL STARTED (DATE) Unknown WELL COMPLETED (DATE) Dec. 14th, 1929.

~~SHOWEL~~       ~~CASWELL~~       ~~KEY-HOLEX~~       ~~XXXXXXXXXXXX~~

CROSS OUT THREE OF THE ABOVE  
 WELL RECORD

DATE OF SHOT	NUMBER OF QUARTS	BARRELS OR FEET
1st 24 HOURS PRODUCTION		
2nd " " "		
3rd " " "		
4th " " "		
5th " " "		

SAND AND CASING

CASING SIZE	WEIGHT	CASING Feet Inches	SAND Name and Nature	TOP	BOTTOM	TOP PAY	BOTTOM PAY	SALT WATER
			T. Sandstone	870	890	(weak brine)		
			Sandstone	1225	1235	brine		
			Red rock	1330'				
			T.D.	1340'				

REMARKS Brine well.