



Western Michigan University
ScholarWorks at WMU

Legacy Scout Tickets from Pure Oil Company

8-20-2021

MGRRE_PureOilScoutTickets_Root, Laura_1_21111614719000

MGRRE

Western Michigan University

Follow this and additional works at: <https://scholarworks.wmich.edu/pure>



Part of the Geology Commons

WMU ScholarWorks Citation

MGRRE, "MGRRE_PureOilScoutTickets_Root, Laura_1_21111614719000" (2021). *Legacy Scout Tickets from Pure Oil Company*. 5142.

<https://scholarworks.wmich.edu/pure/5142>

This Document is brought to you for free and open access via ScholarWorks at WMU. It has been accepted for inclusion in Legacy Scout Tickets from Pure Oil Company by an authorized administrator of ScholarWorks at WMU. See the National Digital Catalogue - Science Base Catalogue for more collections submitted by MGRRE.



MGRRE_PureOilScoutTickets_Root, Laura_1_21111614719000

API 21111614719000

Permit Number 88

Lease Name Root, Laura

Well Number 1

County Midland

Township 14N

Range 02W

Section 18

2021 DEQ or Pure co_name Pure Oil Company

Pure Number 31

Latitude 43.59709

Longitude -84.59832

LOCATION REPORT

No. 31

DATE Aug 20th 1927

STATE Michigan COUNTY Midland DIST. Greendale TWP. SEC. 18 TOWN 14N RANGE 2W

WELL No. 1 (SERIAL No. 31) FARM Laura E Root ACRES

NAME OF STREAM OR WATERS QUADRANGLE

OPERATOR Pure Oil Co. MAP Greendale Tp. Midland Co.

300 Feet from North Line of Farm

300 " " East " " "

" " South " " "

" " West " " "

2940 Feet from North Line of Section

300 " " East " " "

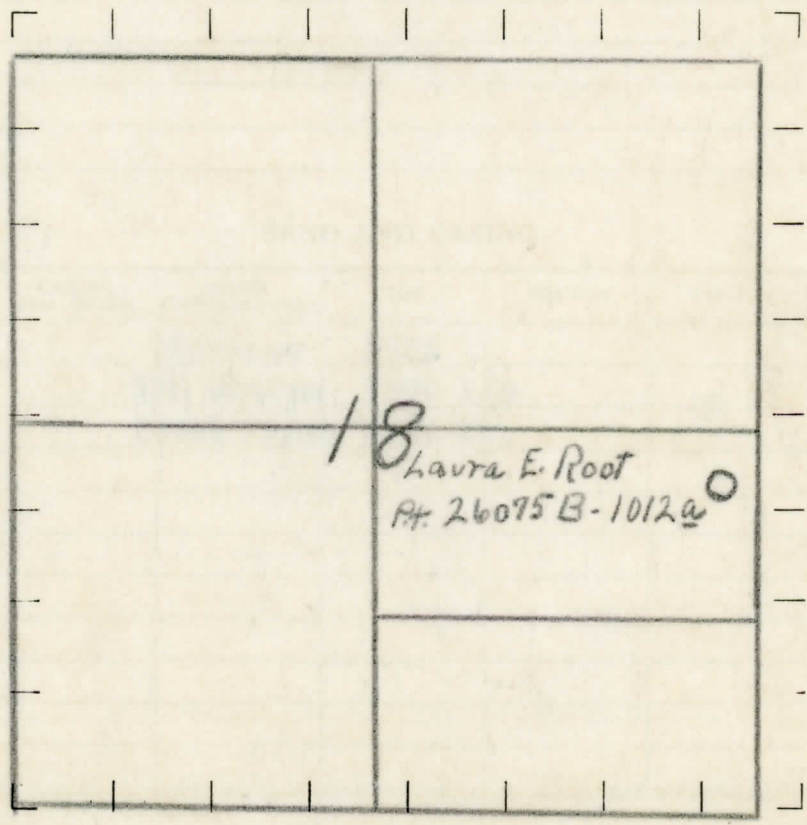
" " South " " "

" " West " " "

LEGEND

- LOCATION
- ① RIG
- ⊕ DRILLING
- ⊙ GAS WELL
- OIL WELL
- ⊙ SMALL OIL WELL
- ⊙ DRY HOLE
- ⊙ DRY SHOWING OIL
- ⊙ DRY SHOWING GAS
- ⊙ ABANDONED LOCATION
- ⊙ ABANDONED GAS WELL
- ⊙ ABANDONED OIL WELL

NOTE: Below make tracing from map, (when no map is obtainable make sketch) showing farm, center of section, this location with measurements and also wells, dry holes, or other locations in the vicinity of this location. Make copy to keep for reference and send original to Chicago office.



REMARKS:

.....

SIGNED

Superintendent or Foreman.

Saginaw Michigan Special DIVISION
COMPLETION RECORD

DATE Jan. 13th 1929, No. 31

STATE Michigan COUNTY Midland DIST. TWP. Greendale SEC. 18 TOWN 14N RANGE 2W
 PREC.

WELL No. 1 (SERIAL No. 31) FARM Laura E. Root ACRES _____

NAME OF STREAM OR WATERS _____ QUADRANGLE _____

OPERATOR Pure Oil Co. MAP Greendale Twp. Midland Co.

LOCATION REPORT SENT IN (DATE) Aug. 30th 1927

WELL STARTED (DATE) Aug. 1927 WELL COMPLETED (DATE) Jan. 13th 1929

OIL WELL	X GAS WELL	X DRY HOLE	X ABANDONED WELL
----------	-----------------------	-----------------------	-----------------------------

CROSS OUT THREE OF THE ABOVE

WELL RECORD

DATE OF SHOT	NUMBER OF QUARTS	BARRELS OR FEET
1st 24 HOURS PRODUCTION		
2nd " " "		
3rd " " "		
4th " " "		
5th " " "		

SAND AND CASING

CASING SIZE	WEIGHT	CASING Feet Inches	SAND Name and Nature	TOP	BOTTOM	TOP PAY	BOTTOM PAY	SALT WATER
			<u>Traverse</u>	<u>2903</u>				
			<u>Top Dundee</u>	<u>3500 1/2</u>				
			<u>Total depth</u>	<u>3607 ft.</u>				

REMARKS _____

