



Western Michigan University
ScholarWorks at WMU

Legacy Scout Tickets from Pure Oil Company

8-20-2021

**MGRRE_PureOilScoutTickets_Carpenter (previously
Kneeland)_1_21111004280000**

MGRRE
Western Michigan University

Follow this and additional works at: <https://scholarworks.wmich.edu/pure>



Part of the Geology Commons

WMU ScholarWorks Citation

MGRRE, "MGRRE_PureOilScoutTickets_Carpenter (previously Kneeland)_1_21111004280000" (2021).
Legacy Scout Tickets from Pure Oil Company. 5152.
<https://scholarworks.wmich.edu/pure/5152>

This Document is brought to you for free and open access via ScholarWorks at WMU. It has been accepted for inclusion in Legacy Scout Tickets from Pure Oil Company by an authorized administrator of ScholarWorks at WMU. See the National Digital Catalogue - Science Base Catalogue for more collections submitted by MGRRE.



**MGRRE_PureOilScoutTickets_Carpenter (previously
Kneeland)_1_21111004280000**

API 21111004280000

Permit Number 428

Lease Name Carpenter (previously Kneeland)

Well Number 1

County Midland

Township 14N

Range 02W

Section 7

2021 DEQ or Pure co_name Saikin, David C.

Pure Number 42

Latitude 43.61251

Longitude -84.60679

WELL REPORT - OUTSIDE OPERATIONS

SERIAL NO. 42

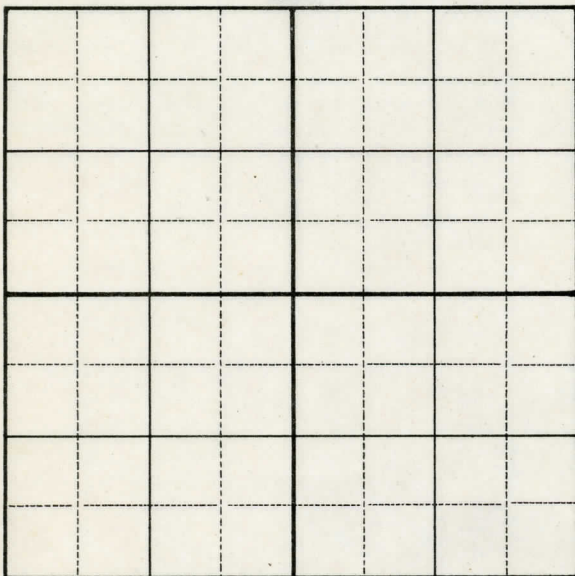
STATE Michigan PSHX CO. Midland
OPERATOR David C. Saikin
FARM Carpenter WELL NO. 1
TWP. Greendale S. 7 T. 14N R. 2W
~~SURVEY~~
LOC. SW SW SW

WILDCAT ☐ FIELD ☐ FIELD NAME _____

MAP NO. _____ CO-ORD. _____ ELEV. _____

STATUS Plugged and Abandoned 10-4-48.
Total Depth 3563'.

NORTH

DATE 11-17-48 SCOUT H. J. G.

SERIAL NO.

42

STATE Michigan ~~PSH~~ Midland CO.

OPERATOR David C. Saikin

FARM Carpenter WELL NO. 1

TWP. Greendale S. 7 T. 14N R. 2W

LOC. SW SW

WILDCAT ☐ FIELD ☐ FIELD NAME _____

MAP NO. _____ CO-ORD. _____ ELEV. _____

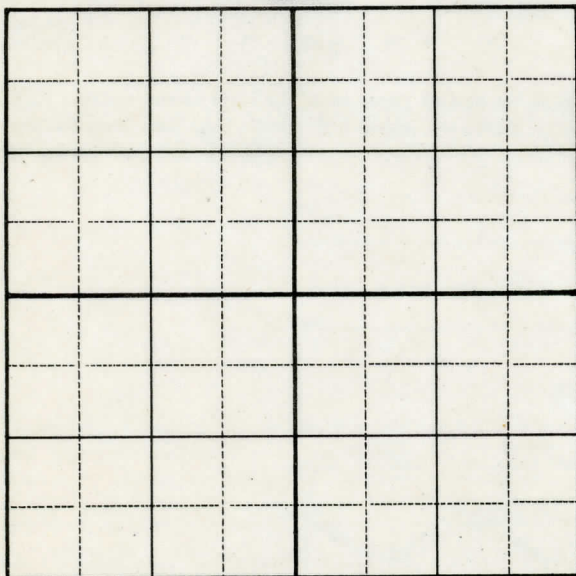
STATUS Name of operator changed from:

Sias Oil Co.

Farm name changed from:

Helen L. Kneeland

NORTH



DATE 10-20-48 SCOUT H. J. G.

THE PURE OIL COMPANY

LOCATION REPORT

No.

42

DATE Feb 25th 1929STATE Michigan COUNTY Midland DIST. Greendale SEC. 7 TOWN 14N RANGE 2WWELL No. 1 (SERIAL No. 42) FARM Helen L. Kneeland 36⁶⁸ ACRES

NAME OF STREAM OR WATERS QUADRANGLE

OPERATOR Sias Oil Co. MAP

Feet from North Line of Farm

" " East " " "

" " South " " "

" " West " " "

Feet from North Line of Section

" " East " " "

" " South " " "

" " West " " "

LEGEND

O LOCATION

① RIG

⊕ DRILLING

⊙ GAS WELL

● OIL WELL

⊙ SMALL OIL WELL

⊙ DRY HOLE

⊙ DRY SHOWING OIL

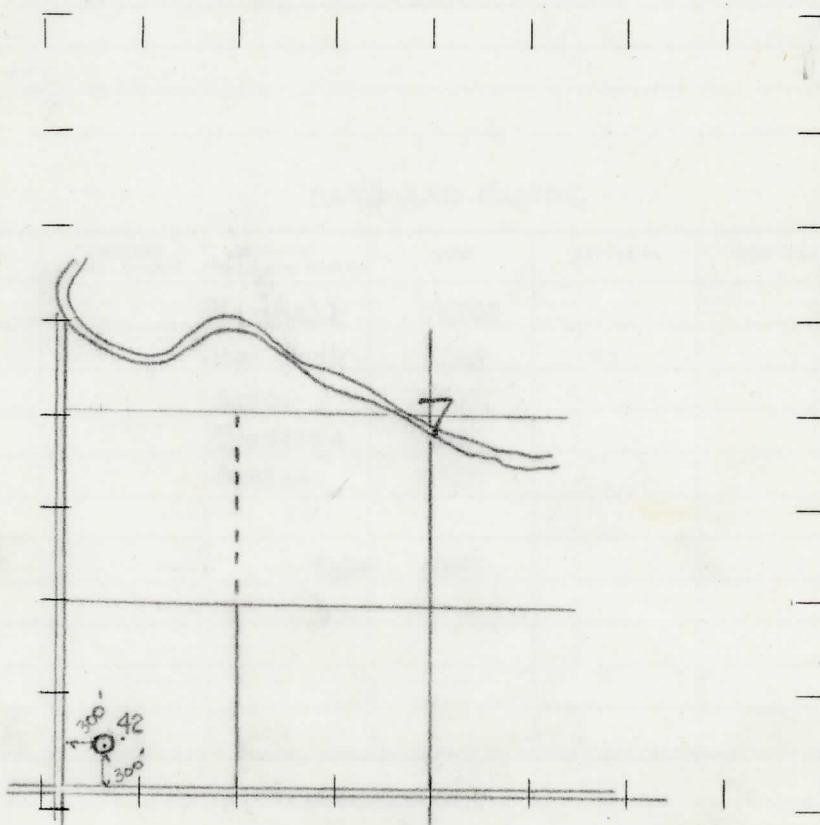
⊙ DRY SHOWING GAS

⊙ ABANDONED LOCATION

⊙ ABANDONED GAS WELL

⊙ ABANDONED OIL WELL

NOTE: Below make tracing from map, (when no map is obtainable make sketch) showing farm, center of section, this location with measurements and also wells, dry holes, or other locations in the vicinity of this location. Make copy to keep for reference and send original to Columbus office.



N

REMARKS:

This tract is part of 540⁹, covered by Lease
26799

SIGNED

Superintendent or Foreman.

SIGNED _____ SUPT. OR FOREMAN