



Western Michigan University
ScholarWorks at WMU

Legacy Scout Tickets from Pure Oil Company

8-20-2021

MGRRE_PureOilScoutTickets_Root, Laura E_2_21111005220000

MGRRE

Western Michigan University

Follow this and additional works at: <https://scholarworks.wmich.edu/pure>



Part of the Geology Commons

WMU ScholarWorks Citation

MGRRE, "MGRRE_PureOilScoutTickets_Root, Laura E_2_21111005220000" (2021). *Legacy Scout Tickets from Pure Oil Company*. 5153.

<https://scholarworks.wmich.edu/pure/5153>

This Document is brought to you for free and open access via ScholarWorks at WMU. It has been accepted for inclusion in Legacy Scout Tickets from Pure Oil Company by an authorized administrator of ScholarWorks at WMU. See the National Digital Catalogue - Science Base Catalogue for more collections submitted by MGRRE.



MGRRE_PureOilScoutTickets_Root, Laura E_2_21111005220000

API 21111005220000

Permit Number 522

Lease Name Root, Laura E

Well Number 2

County Midland

Township 14N

Range 02W

Section 18

2021 DEQ or Pure co_name Oryx Energy Company

Pure Number 43

Latitude 43.60153

Longitude -84.5972

THE PURE OIL COMPANY
LOCATION REPORT

No. **43**

DATE

STATE Michigan COUNTY Midland DIST. Greendale SEC. 18 TOWN 14 N RANGE 2 W
TWP. PREC.

WELL No. 2 (SERIAL No. 43) FARM Laura E Root ACRES

NAME OF STREAM OR WATERS QUADRANGLE NW 1/4 - SE 1/4

OPERATOR Pure Oil Co. MAP 4" = 1 Mile

.....Feet from North Line of Farm

..... " " East " " "

300 " " South " " "

300 " " West " " "

.....Feet from North Line of Section

2340 " " East " " "

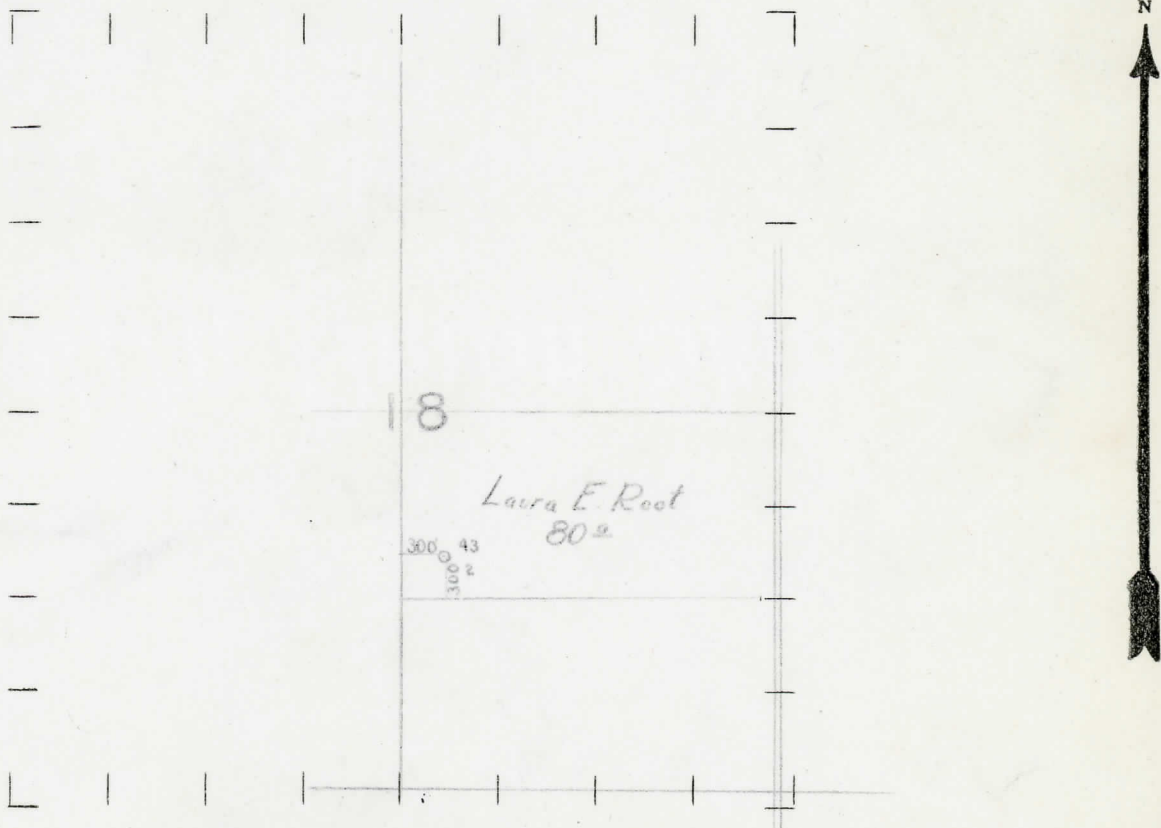
1620 " " South " " "

..... " " West " " "

LEGEND

- | | |
|------------------|----------------------|
| ○ LOCATION | ⊗ DRY HOLE |
| ⊕ RIG | ⊕ DRY SHOWING OIL |
| ⊕ DRILLING | ⊗ DRY SHOWING GAS |
| ⊗ GAS WELL | ⊗ ABANDONED LOCATION |
| ● OIL WELL | ⊗ ABANDONED GAS WELL |
| ⊕ SMALL OIL WELL | ⊗ ABANDONED OIL WELL |

NOTE: Below make tracing from map, (when no map is obtainable make sketch) showing farm, center of section, this location with measurements and also wells, dry holes, or other locations in the vicinity of this location. Make copy to keep for reference and send original to Columbus office.



REMARKS:

This location falls in a swamp, under 1 1/2 ft of water.
Sandy bottom. Dense brush. Temporary road 700' West

SIGNED

Superintendent or Foreman.

Wm E. Hoston