



Western Michigan University  
ScholarWorks at WMU

---

Legacy Scout Tickets from Pure Oil Company

---

8-20-2021

## MGRRE\_PureOilScoutTickets\_State Midland aka State of Michigan\_B-1\_21111005160000

MGRRE

*Western Michigan University*

Follow this and additional works at: <https://scholarworks.wmich.edu/pure>



Part of the Geology Commons

---

### WMU ScholarWorks Citation

MGRRE, "MGRRE\_PureOilScoutTickets\_State Midland aka State of Michigan\_B-1\_21111005160000" (2021). *Legacy Scout Tickets from Pure Oil Company*. 5158.  
<https://scholarworks.wmich.edu/pure/5158>

This Document is brought to you for free and open access via ScholarWorks at WMU. It has been accepted for inclusion in Legacy Scout Tickets from Pure Oil Company by an authorized administrator of ScholarWorks at WMU. See the National Digital Catalogue - Science Base Catalogue for more collections submitted by MGRRE.



---

**MGRRE\_PureOilScoutTickets\_State Midland aka State of Michigan\_B-1\_21111005160000**

API 21111005160000

Permit Number 516

Lease Name State Midland aka State of Michigan

Well Number B-1

County Midland

Township 14N

Range 02W

Section 18

2021 DEQ or Pure co\_name Union Oil Company of California

Pure Number 48

Latitude 43.61078

Longitude -84.60667

48

THE PURE OIL COMPANY

LOCATION REPORT

No.

DATE June 16th 1929.

STATE Michigan COUNTY Midland DIST. TWP. Greendale SEC. 18 TOWN 14 N RANGE 2 W.

WELL No. B-1 (SERIAL No. 48) FARM State of Michigan #27180-C ACRES

NAME OF STREAM OR WATERS QUADRANGLE

OPERATOR The Pure Oil Company. MAP

330 Feet from North Line of Farm

“ “ East “ “ “

“ “ South “ “ “

330 “ “ West “ “ “

330 Feet from North Line of Section

“ “ East “ “ “

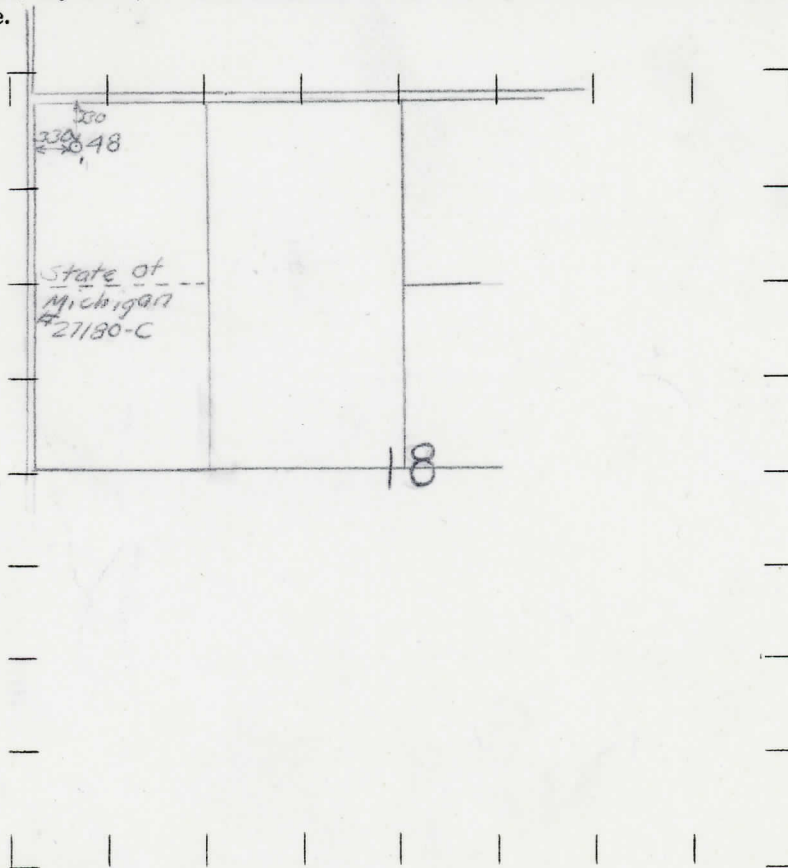
“ “ South “ “ “

330 “ “ West “ “ “

LEGEND

- O LOCATION
DRY HOLE
RIG
DRY SHOWING OIL
DRILLING
DRY SHOWING GAS
GAS WELL
ABANDONED LOCATION
OIL WELL
ABANDONED GAS WELL
SMALL OIL WELL
ABANDONED OIL WELL

NOTE: Below make tracing from map, (when no map is obtainable make sketch) showing farm, center of section, this location with measurements and also wells, dry holes, or other locations in the vicinity of this location. Make copy to keep for reference and send original to Columbus office.



REMARKS:

This well is designated on Application for Permit as State Midland B-1

SIGNED

Superintendent or Foreman.