



Legacy Scout Tickets from Pure Oil Company

8-20-2021

**MGRRE_PureOilScoutTickets_Reem, Glen M.
"C"_1_21111006170000**

MGRRE
Western Michigan University

Follow this and additional works at: <https://scholarworks.wmich.edu/pure>



Part of the Geology Commons

WMU ScholarWorks Citation

MGRRE, "MGRRE_PureOilScoutTickets_Reem, Glen M. "C"_1_21111006170000" (2021). *Legacy Scout Tickets from Pure Oil Company*. 5162.
<https://scholarworks.wmich.edu/pure/5162>

This Document is brought to you for free and open access via ScholarWorks at WMU. It has been accepted for inclusion in Legacy Scout Tickets from Pure Oil Company by an authorized administrator of ScholarWorks at WMU. See the National Digital Catalogue - Science Base Catalogue for more collections submitted by MGRRE.



MGRRE_PureOilScoutTickets_Reem, Glen M. "C"_1_21111006170000

API 21111006170000

Permit Number 617

Lease Name Reem, Glen M. "C"

Well Number 1

County Midland

Township 14N

Range 02W

Section 7

2021 DEQ or Pure co_name Union Oil Company of California

Pure Number 52

Latitude 43.61621

Longitude -84.60673

THE PURE OIL COMPANY
LOCATION REPORT

No. **52**

DATE June 10th 1929

STATE Michigan COUNTY Midland DIST. Greendale SEC. 7 TOWN 14 N RANGE 2 W
WELL No. 1 (SERIAL No. 52) FARM Glen Reem "C" #26184 ACRES

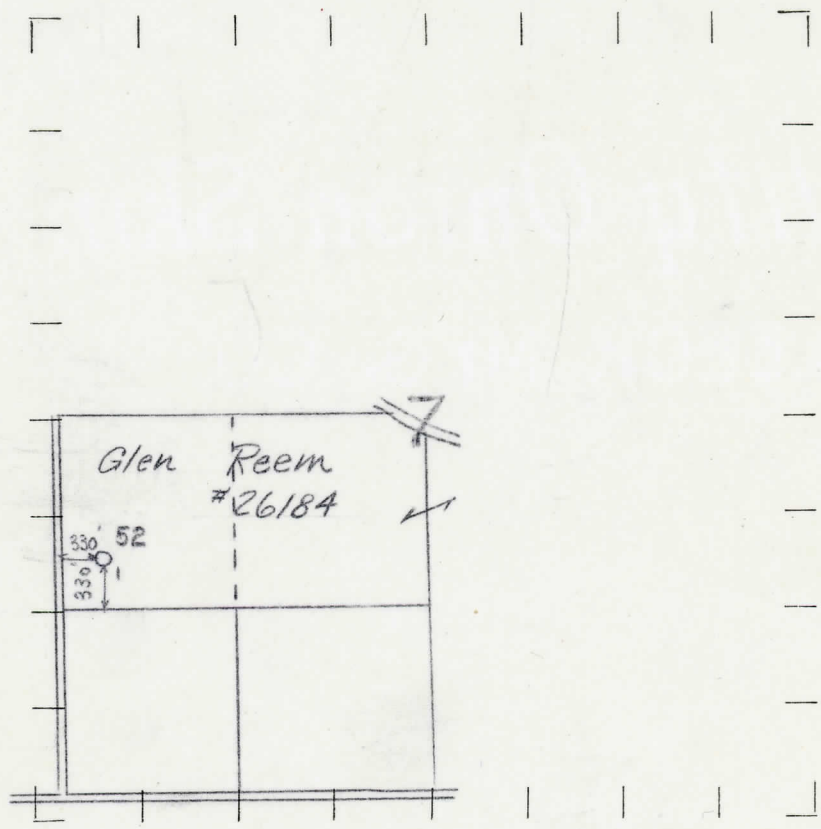
NAME OF STREAM OR WATERS _____ QUADRANGLE _____
OPERATOR The Pure Oil Co MAP Greendale Twp - Midland Co

----- Feet from North Line of Farm
----- " " East " " "
330 " " South " " "
330 " " West " " "
----- Feet from North Line of Section
----- " " East " " "
1650 " " South " " "
330 " " West " " "

LEGEND

- LOCATION
- ⊕ RIG
- ⊕ DRILLING
- ⊕ GAS WELL
- OIL WELL
- ⬇ SMALL OIL WELL
- ⊕ DRY HOLE
- ⬇ DRY SHOWING OIL
- ⊕ DRY SHOWING GAS
- ⊕ ABANDONED LOCATION
- ⊕ ABANDONED GAS WELL
- ⬇ ABANDONED OIL WELL

NOTE: Below make tracing from map, (when no map is obtainable make sketch) showing farm, center of section, this location with measurements and also wells, dry holes, or other locations in the vicinity of this location. Make copy to keep for reference and send original to Columbus office.



REMARKS: _____

SIGNED

Superintendent or Foreman.