



Western Michigan University  
ScholarWorks at WMU

---

Legacy Scout Tickets from Pure Oil Company

---

8-20-2021

**MGRRE\_PureOilScoutTickets\_Carpenter  
Heirs\_4\_21111008480000**

MGRRE  
*Western Michigan University*

Follow this and additional works at: <https://scholarworks.wmich.edu/pure>



Part of the Geology Commons

---

#### WMU ScholarWorks Citation

MGRRE, "MGRRE\_PureOilScoutTickets\_Carpenter Heirs\_4\_21111008480000" (2021). *Legacy Scout Tickets from Pure Oil Company*. 5168.  
<https://scholarworks.wmich.edu/pure/5168>

This Document is brought to you for free and open access via ScholarWorks at WMU. It has been accepted for inclusion in Legacy Scout Tickets from Pure Oil Company by an authorized administrator of ScholarWorks at WMU. See the National Digital Catalogue - Science Base Catalogue for more collections submitted by MGRRE.



---

**MGRRE\_PureOilScoutTickets\_Carpenter Heirs\_4\_21111008480000**

API 21111008480000

Permit Number 848

Lease Name Carpenter Heirs

Well Number 4

County Midland

Township 14N

Range 02W

Section 7

2021 DEQ or Pure co\_name Roosevelt Oil Company

Pure Number 71

Latitude 43.61437

Longitude -84.60421

THE PURE OIL COMPANY

DATE October 10, 1933PLUGGINGLOCATION REPORTNo. 71STATE Michigan COUNTY Midland DIST. Greendale SEC. 7 TOWN 14 N RANGE 2 WWELL No. 4 (SERIAL No. 71) FARM Thos. J. Carpenter, Heirs ACRESNAME OF STREAM OR WATERS QUADRANGLE NE-SW-SWOPERATOR Sias Oil Company MAP Greendale Township, Midland County

Feet from North Line of Farm

330 " " East " " "

" " South " " "

" " West " " "

Feet from North Line of Section

" " East " " "

990 " " South " " "

990 " " West " " "

LEGEND

O LOCATION

① RIG

⊕ DRILLING

⊗ GAS WELL

● OIL WELL

⬮ SMALL OIL WELL

⬮ DRY HOLE

⬮ DRY SHOWING OIL

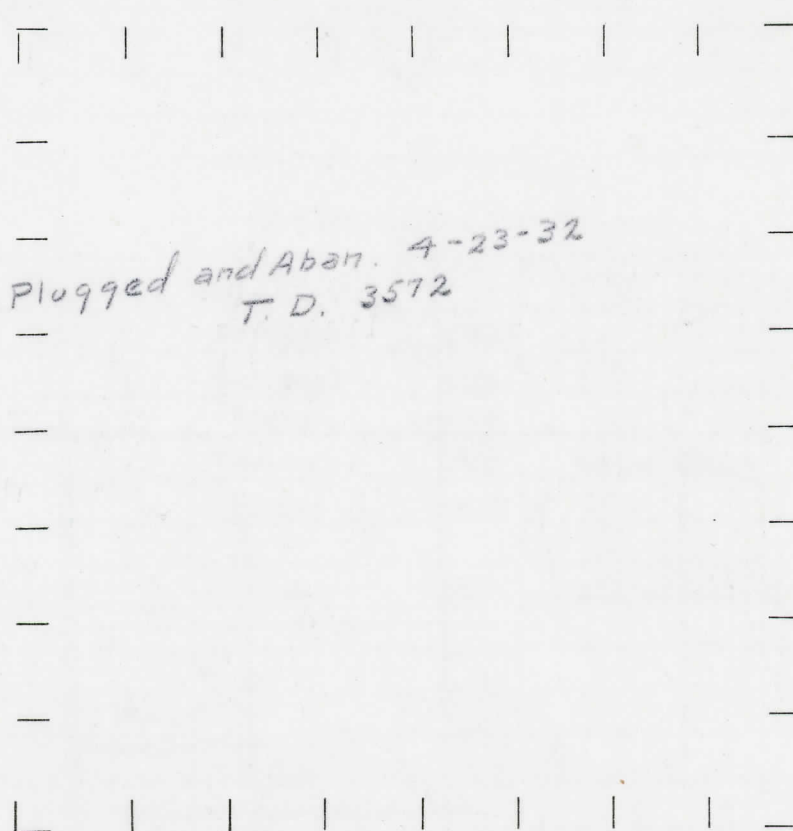
⬮ DRY SHOWING GAS

⬮ ABANDONED LOCATION

⬮ ABANDONED GAS WELL

⬮ ABANDONED OIL WELL

NOTE: Below make tracing from map, (when no map is obtainable make sketch) showing farm, center of section, this location with measurements and also wells, dry holes, or other locations in the vicinity of this location. Make copy to keep for reference and send original to Columbus office.



REMARKS:

SIGNED

*R. L. Yeager*  
Superintendent or Foreman.

LOCATING

LOCATION REPORT

No. 11

DATE Nov. 6th, 1929

LOCATION REPORT

No. 11

STATE Michigan COUNTY Midland DIST. Greendale SEC. 7 TOWN 14N RANGE 2W  
WELL No. 4 (SERIAL No. 71) FARM Thomas J. Carpenters Heirs ACRES

NAME OF STREAM OR WATERS QUADRANGLE SW<sup>1</sup>/<sub>4</sub> - SW<sup>1</sup>/<sub>4</sub>

OPERATOR Sias Oil Company MAP Greendale Township, Midland County

330 Feet from North Line of Farm

330 " " East " " "

" " South " " "

" " West " " "

Feet from North Line of Section

" " East " " "

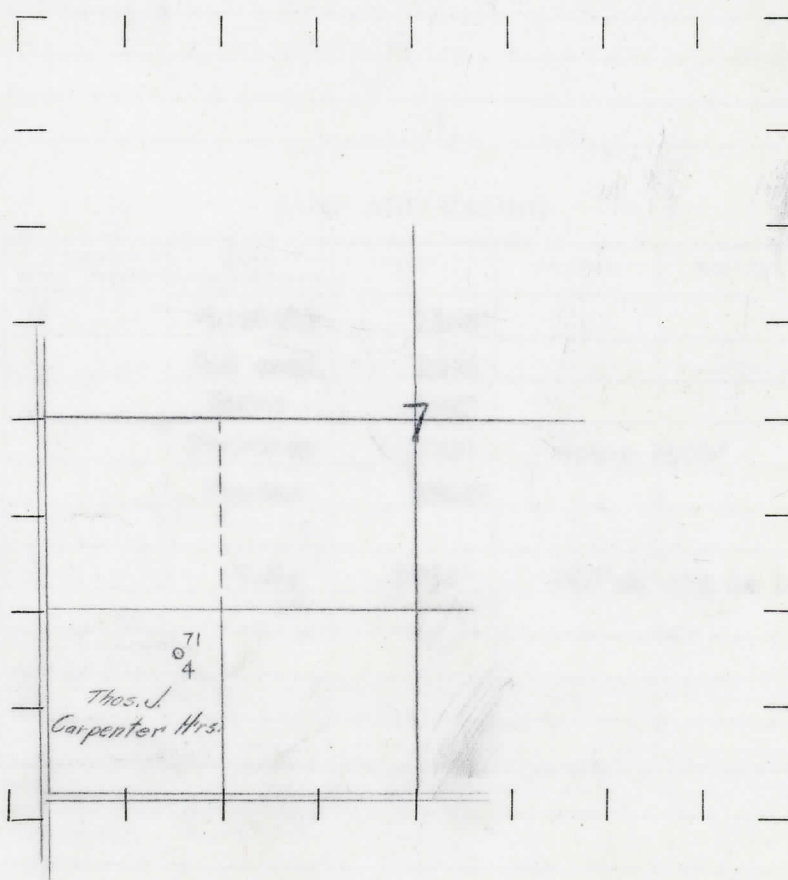
990 " " South " " "

990 " " West " " "

LEGEND

- |                  |                      |
|------------------|----------------------|
| ○ LOCATION       | ✦ DRY HOLE           |
| ① RIG            | ✦ DRY SHOWING OIL    |
| ⊕ DRILLING       | ✦ DRY SHOWING GAS    |
| ⊗ GAS WELL       | ✦ ABANDONED LOCATION |
| ● OIL WELL       | ✦ ABANDONED GAS WELL |
| ⊙ SMALL OIL WELL | ✦ ABANDONED OIL WELL |

NOTE: Below make tracing from map, (when no map is obtainable make sketch) showing farm, center of section, this location with measurements and also wells, dry holes, or other locations in the vicinity of this location. Make copy to keep for reference and send original to Columbus office.



REMARKS:

SIGNED

Superintendent or Foreman.

No. -71-

**SUPT. OR FOREMAN**