



Western Michigan University
ScholarWorks at WMU

Legacy Scout Tickets from Pure Oil Company

8-20-2021

MGRRE_PureOilScoutTickets_Dow Marshall Brine - Meridian Group_9_None

MGRRE

Western Michigan University

Follow this and additional works at: <https://scholarworks.wmich.edu/pure>



Part of the Geology Commons

WMU ScholarWorks Citation

MGRRE, "MGRRE_PureOilScoutTickets_Dow Marshall Brine - Meridian Group_9_None" (2021). *Legacy Scout Tickets from Pure Oil Company*. 5193.
<https://scholarworks.wmich.edu/pure/5193>

This Document is brought to you for free and open access via ScholarWorks at WMU. It has been accepted for inclusion in Legacy Scout Tickets from Pure Oil Company by an authorized administrator of ScholarWorks at WMU. See the National Digital Catalogue - Science Base Catalogue for more collections submitted by MGRRE.



MGRRE_PureOilScoutTickets_Dow Marshall Brine - Meridian Group_9_None

API None

Permit Number None

Lease Name Dow Marshall Brine - Meridian Group

Well Number 9

County Midland

Township 14N

Range 01W

Section 24

2021 DEQ or Pure co_name Dow Chemical Company

Pure Number 97

Latitude 43.5892665

Longitude -84.3794797

DATE Dec. 12, 1929

THE PURE OIL COMPANY
LOCATION REPORT

No. 97

STATE Michigan COUNTY Midland DIST. TWP. Lee SEC. 24 TOWN 14 N RANGE 1 W

WELL No. 9 (SERIAL No. 97) FARM Dow Chemical Company, Meridian Group ACRES

NAME OF STREAM OR WATERS _____ QUADRANGLE NW $\frac{1}{4}$ - NE $\frac{1}{4}$

OPERATOR Dow Chemical Company MAP Lee Township, Midland County

_____ Feet from North Line of Farm

_____ " " East " " "

_____ " " South " " "

_____ " " West " " "

1000

_____ Feet from North Line of Section

2570

_____ " " East " " "

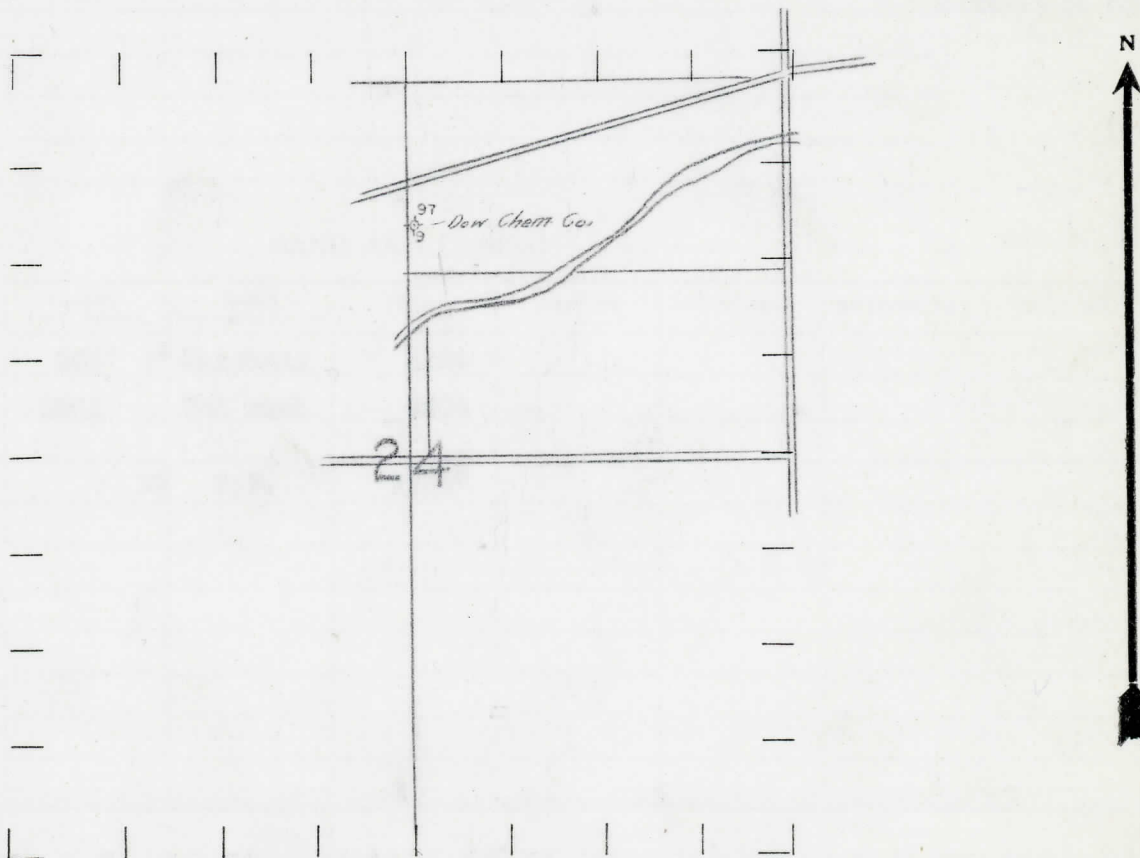
_____ " " South " " "

_____ " " West " " "

LEGEND

- O LOCATION
- ⊕ RIG
- ⊕ DRILLING
- ⊙ GAS WELL
- OIL WELL
- ⊙ SMALL OIL WELL
- ⊙ DRY HOLE
- ⊙ DRY SHOWING OIL
- ⊙ DRY SHOWING GAS
- ⊙ ABANDONED LOCATION
- ⊙ ABANDONED GAS WELL
- ⊙ ABANDONED OIL WELL

NOTE: Below make tracing from map, (when no map is obtainable make sketch) showing farm, center of section, this location with measurements and also wells, dry holes, or other locations in the vicinity of this location. Make copy to keep for reference and send original to Columbus office.



REMARKS: Brine Well to Marshall Sand. Dow Chemical Company owns 1 acre tract in fee.

SIGNED _____

Superintendent or Foreman.

DATE Dec. 14th, 1929. **COMPLETION RECORD** No. -97-

STATE Michigan COUNTY Midland DIST. Lee SEC. 24 TOWN 14 N RANGE 1 W
 PREC. -

WELL No. 9 (SERIAL No. 97) FARM Dow Chemical Company, Meridian Group ACRES -

NAME OF STREAM OR WATERS _____ QUADRANGLE _____

OPERATOR Dow Chemical Company MAP Lee Township, Midland Co.

LOCATION REPORT SENT IN (DATE) Dec. 14th, 1929.

WELL STARTED (DATE) Unknown WELL COMPLETED (DATE) Dec. 14th, 1929.

OIL WELL
 GAS WELL
 ~~WATER~~ WELL
 ABANDONED WELL

CROSS OUT THREE OF THE ABOVE
 WELL RECORD

DATE OF SHOT	NUMBER OF QUARTS	BARRELS OR FEET
1st 24 HOURS PRODUCTION		
2nd " " "		
3rd " " "		
4th " " "		
5th " " "		

SAND AND CASING

CASING SIZE	WEIGHT	CASING Feet Inches	SAND Name and Nature	TOP	BOTTOM	TOP PAY	BOTTOM PAY	SALT WATER
8"		309'	Marshall	1224				
6"		1031	Red rock	1304				
			T.D.	1330'				

REMARKS Brine well.
