



Western Michigan University  
ScholarWorks at WMU

---

Legacy Scout Tickets from Pure Oil Company

---

8-20-2021

**MGRRE\_PureOilScoutTickets\_Adams, Frank (Mt Pleasant Unit Tr 286-2)\_2\_21111011990000**

MGRRE  
*Western Michigan University*

Follow this and additional works at: <https://scholarworks.wmich.edu/pure>



Part of the Geology Commons

---

#### WMU ScholarWorks Citation

MGRRE, "MGRRE\_PureOilScoutTickets\_Adams, Frank (Mt Pleasant Unit Tr 286-2)\_2\_21111011990000" (2021). *Legacy Scout Tickets from Pure Oil Company*. 5238.  
<https://scholarworks.wmich.edu/pure/5238>

This Document is brought to you for free and open access via ScholarWorks at WMU. It has been accepted for inclusion in Legacy Scout Tickets from Pure Oil Company by an authorized administrator of ScholarWorks at WMU. See the National Digital Catalogue - Science Base Catalogue for more collections submitted by MGRRE.



---

**MGRRE\_PureOilScoutTickets\_Adams, Frank (Mt Pleasant Unit Tr  
286-2)\_2\_21111011990000**

API 21111011990000

Permit Number 1199

Lease Name Adams, Frank (Mt Pleasant Unit Tr 286-2)

Well Number 2

County Midland

Township 14N

Range 02W

Section 10

2021 DEQ or Pure co\_name Oryx Energy Company

Pure Number 155

Latitude 43.61248

Longitude -84.54734

DATE August 22, 1931

LOCATION REPORT

No. 155

STATE Michigan COUNTY Midland DIST. Greendale SEC. 10 TOWN 14-N RANGE 2-W  
 WELL No. 2 (SERIAL No. 155) FARM Frank Adams ACRES 40  
 NAME OF STREAM OR WATERS \_\_\_\_\_ QUADRANGLE SW - SW  
 OPERATOR George Talbot et al MAP Greendale Township, Midland County

Feet from North Line of Farm

330 " " East " " "  
 330 " " South " " "  
 330 " " West " " "

Feet from North Line of Section

330 " " East " " "  
 330 " " South " " "  
 330 " " West " " "

## LEGEND

O LOCATION

① RIG

⊕ DRILLING

⊗ GAS WELL

● OIL WELL

⬮ SMALL OIL WELL

⊕ DRY HOLE

⬮ DRY SHOWING OIL

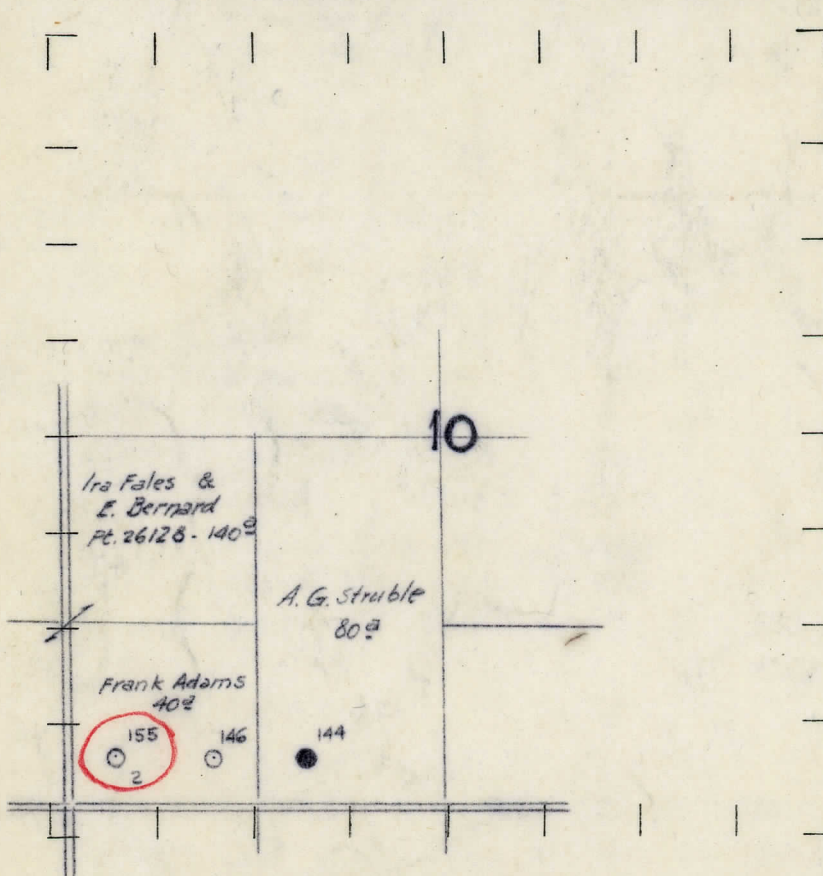
⊗ DRY SHOWING GAS

⊕ ABANDONED LOCATION

⬮ ABANDONED GAS WELL

⬮ ABANDONED OIL WELL

NOTE: Below make tracing from map, (when no map is obtainable make sketch) showing farm, center of section, this location with measurements and also wells, dry holes, or other locations in the vicinity of this location. Make copy to keep for reference and send original to Columbus office.



REMARKS:

SIGNED

Superintendent or Foreman.



DALE VALLEY SS TREN

ГОСАТОН КЕЪОВЕ

No. 722

DATE October 31, 1931

# Michigan Producing DIVISION COMPLETION RECORD

No. 155

STATE Michigan COUNTY Midland DIST. Greendale TWP. 10 SEC. 14-N RANGE 2-W

DIST. \_\_\_\_\_  
TWP. Greendale SEC. 10 TOWN 14-N RANGE 2-W  
PREC. \_\_\_\_\_

WELL No. 2 (SERIAL No. 155) FARM Frank Adams ACRES           

NAME OF STREAM OR WATERS \_\_\_\_\_ QUADRANGLE SW $\frac{1}{4}$  - SW $\frac{1}{4}$

OPERATOR George Talbot et al MAP Greendale Twp., Midland County

LOCATION REPORT SENT IN (DATE) 8-22-31

WELL STARTED (DATE) 9-10-31 WELL COMPLETED (DATE) 10-26-31

## OIL, WELL.

**2005**

2DR-48-6146

**ABANDONED OVER**

CROSS OUT THREE OF THE ABOVE  
WELL RECORD

DATE OF SHOT \_\_\_\_\_ NUMBER OF QUARTS \_\_\_\_\_

1st 24 HOURS PRODUCTION	1200 barrels	BARRELS OR FEET
-------------------------	--------------	-----------------

[illegible]

3rd " " " " " "

4th " " " " " " " "

5th " " " " " " " " " "

## SAND AND CASING

CASING SIZE	WEIGHT	CASING Feet Inches	SAND Name and Nature	TOP	BOTTOM	TOP PAY	BOTTOM PAY	SALT WATER
10"		304'	Drift	0	295			
8 1/2"		870'	Marshall	1140	1290			
6-5/8"		1399'	Red Rock	1290	1378			
5-3/16"		3510'	Stray sand	1625	1635			
			Berea	2397	2467			
			Antrim shale	2467	2895			
			Traverse line	2895	3300			
			Dundee	3504		3536	3548	
						3558	3562	
			Total depth		3567			

REMARKS	Gas in Dundee estimated 1,500,000 cubic feet. Show oil 1630'. Complete log attached.
---------	--

NOTE:—MAKE COPY TO KEEP FOR REFERENCE AND SEND ORIGINAL TO CHICAGO OFFICE. LIST MATERIAL CHARGEABLE TO WELL ON OTHER SIDE.

SIGNED

G. H. Bell

**SUPT. OR FOREMAN**



DESCRIPTION	QUANTITY	MAKE	SIZE	MATERIAL
-------------	----------	------	------	----------

LIST OF MATERIAL CHARGEABLE TO WELL NO.

Our Midland County No. 155	10"	304'
Greendale Twp., Midland County	8 1/4"	870'
	6-5/8"	1399'
	5-3/16"	3510'

From	To	Formation
0	295	Drift
295	305	Black mud
305	335	Gray shale
335	385	White sand
385	450	Gray shale
450	700	Mud and sand
700	1120	Shale and shells
1120	1140	Lime
1140	1290	Marshall sand
1290	1378	Red rock
1378	1385	Gray shale
1385	1440	Black shale
1440	1625	Gray shale
1625	1635	Stray sand - show oil 1630'
1635	2370	Gray shale
2370	2397	Brown shale
2397	2467	Berea
2467	2895	Brown shale
2895	3300	Traverse lime
3300	3504	Gray shale
3504		Dundee
3536		Top pay
	3567	Total depth

1st 24 hrs. production 1200 barrels  
Estimated 1-1/2 million cubic feet gas