



Western Michigan University
ScholarWorks at WMU

Legacy Scout Tickets from Pure Oil Company

8-20-2021

MGRRE_PureOilScoutTickets_Adams, Frank_3_21111012280000

MGRRE

Western Michigan University

Follow this and additional works at: <https://scholarworks.wmich.edu/pure>



Part of the Geology Commons

WMU ScholarWorks Citation

MGRRE, "MGRRE_PureOilScoutTickets_Adams, Frank_3_21111012280000" (2021). *Legacy Scout Tickets from Pure Oil Company*. 5245.

<https://scholarworks.wmich.edu/pure/5245>

This Document is brought to you for free and open access via ScholarWorks at WMU. It has been accepted for inclusion in Legacy Scout Tickets from Pure Oil Company by an authorized administrator of ScholarWorks at WMU. See the National Digital Catalogue - Science Base Catalogue for more collections submitted by MGRRE.



MGRRE_PureOilScoutTickets_Adams, Frank_3_21111012280000

API 21111012280000

Permit Number 1228

Lease Name Adams, Frank

Well Number 3

County Midland

Township 14N

Range 02W

Section 10

2021 DEQ or Pure co_name Talbot Oil Company

Pure Number 165

Latitude 43.61429

Longitude -84.54483

THE PURE OIL COMPANY

DATE February 15, 1936

LOCATION REPORT

No. 165

STATE Michigan COUNTY Midland DIST. Greendale SEC. 10 TOWN 14N RANGE 2W
 WELL No. 33 (SERIAL No. 1655) FARM Frank Adams ACRES

NAME OF STREAM OR WATERS _____ QUADRANGLE NE-SW-SW
NE SW SWOPERATOR Talbot Oil Co. Map Greendale Twp., Midland County
Talbot Oil Co. Greendale-Mid.330 330 Feet from North Line of Farm330 330 " " East " " "

" " South " " "

" " West " " "

330 Feet from North Line of Section330 " " East " " "990 990 " " South " " "990 990 " " West " " "

LEGEND

O LOCATION

① RIG

⊕ DRILLING

☼ GAS WELL

● OIL WELL

● SMALL OIL WELL

☼ DRY HOLE

● DRY SHOWING OIL

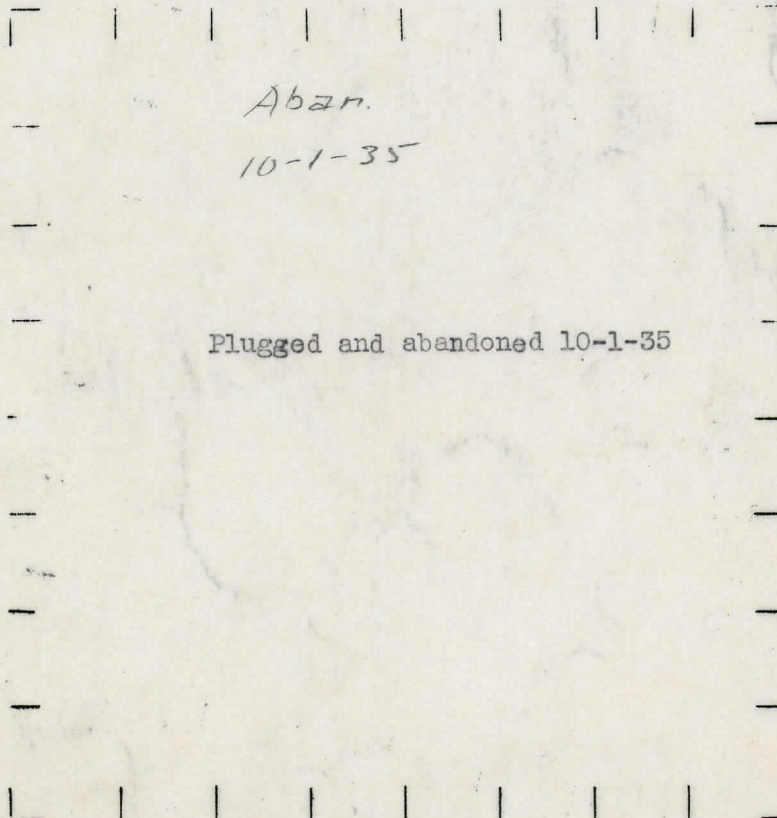
☼ DRY SHOWING GAS

☼ ABANDONED LOCATION

☼ ABANDONED GAS WELL

● ABANDONED OIL WELL

NOTE: Below make tracing from map, (when no map is obtainable make sketch) showing farm, center of section, this location with measurements and also wells, dry holes, or other locations in the vicinity of this location.



REMARKS:

SIGNED

R. L. Younger
 Superintendent or Foreman.

DATE Sept. 4th, 1931.

LOCATION REPORT

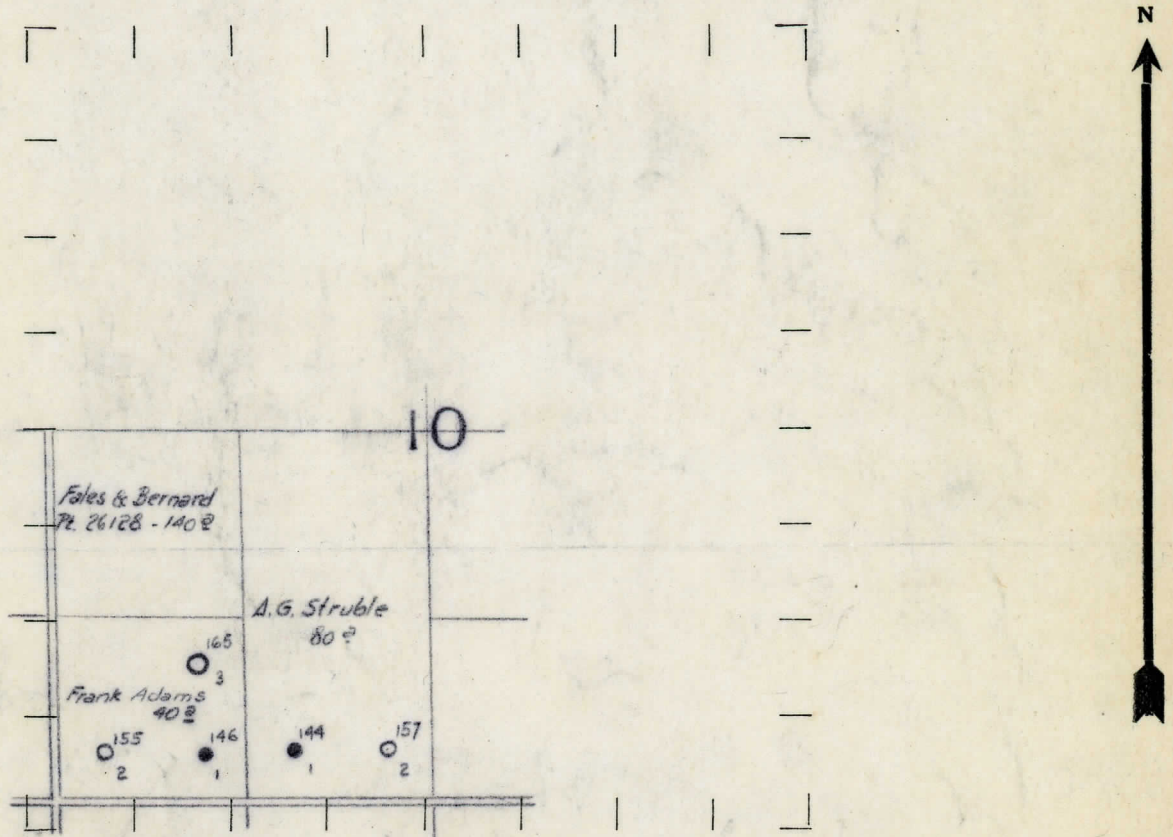
No. 165

STATE Michigan COUNTY Midland TWP. Greendale SEC. 10 TOWN 14 N RANGE 2 W
WELL No. 3 (SERIAL No. 165) FARM Frank Adams ACRES 40
NAME OF STREAM OR WATERS _____ QUADRANGLE LW 1 500 1
OPERATOR Geo. Talbot et al MAP _____

Feet from North Line of Farm
" " East " " "
" " South " " "
" " West " " "
Feet from North Line of Section
" " East " " "
" " South " " "
" " West " " "

- LEGEND
- LOCATION
 - ① RIG
 - ⊕ DRILLING
 - ⊗ GAS WELL
 - OIL WELL
 - ⬮ SMALL OIL WELL
 - ⬮ DRY HOLE
 - ⬮ DRY SHOWING OIL
 - ⬮ DRY SHOWING GAS
 - ⬮ ABANDONED LOCATION
 - ⬮ ABANDONED GAS WELL
 - ⬮ ABANDONED OIL WELL

NOTE: Below make tracing from map, (when no map is obtainable make sketch) showing farm, center of section, this location with measurements and also wells, dry holes, or other locations in the vicinity of this location. Make copy to keep for reference and send original to Columbus office.



REMARKS: _____

SIGNED _____
Superintendent or Foreman.

THE PURE OIL COMPANY

Michigan Producing DIVISION
COMPLETION RECORD

No. 165

DATE **1-23-32**

STATE **Michigan** COUNTY **Midland** DIST. TWP. **Greendale** SEC. **10** TOWN **14-N** RANGE **2-W**

WELL No. **3** (SERIAL No. **165**) FARM **Frank Adams** ACRES

NAME OF STREAM OR WATERS QUADRANGLE **NE-SW-SW**

OPERATOR **George Talbot et al** MAP **Greendale Twp., Midland County**

LOCATION REPORT SENT IN (DATE) **9-5-31**

WELL STARTED (DATE) **12-6-31** WELL COMPLETED (DATE) **1-22-32**

OIL WELL	WATER WELL	GEOTHERMAL	OTHER
----------	-----------------------	-----------------------	------------------

CROSS OUT THREE OF THE ABOVE
WELL RECORD

DATE OF SHOT NUMBER OF QUARTS

1st 24 HOURS PRODUCTION	Estimated 900 bbls.	BARRELS OR FEET
2nd " " "		" " "
3rd " " "		" " "
4th " " "		" " "
5th " " "		" " "

SAND AND CASING

CASING SIZE	WEIGHT	CASING Feet Inches	SAND Name and Nature	TOP	BOTTOM	TOP PAY	BOTTOM PAY	SALT WATER
10"		299'	Marshall	1140	1300			
8 1/2"		880'	Red Rock	1300	1380			
6-5/8"		1488'	Sunbury	2370	2390			
5-3/16"		3501'	Berea	2390	2394			
			Antrim	2470	2900			
			Traverse	2900	3305			
			Dundee	3505		3532	3535	
						3551	3554	
			Total depth		3570			

REMARKS

NOTE.—MAKE COPY TO KEEP FOR REFERENCE AND SEND ORIGINAL TO CHICAGO OFFICE. LIST MATERIAL CHARGEABLE TO WELL ON OTHER SIDE.

SIGNED *G. H. Bell* SUPT. OR FOREMAN

ON ITEM OF MATERIAL CHARGEABLE TO WELL NO.
 Sec. 10, Greendale Township - Midland County, Michigan
 OUR #165

OPERATOR: Geo. Talbot et al
 Completed 1-22-32

Casing
 10" 299'
 8 1/4" 880'
 6-5/8" 1488'
 5-3/16" 3501'

<u>From</u>	<u>To</u>	<u>Formation</u>
0	300	Sand & Gravel
300	320	Black Shale
320	370	White Sand Water 330
370	400	Black Shale
400	480	White sand Water 400
480	550	Black shale
550	640	White sand
640	665	Gray shale
665	805	Shale & shells
805	860	White lime
860	870	White sand
870	875	Green shale
875	885	Shale & Shells
880	1025	Lime shells
1025	1125	Shale
1125	1140	Lime shell
1140	1180	White sand
1180	1185	Shale Break
1185	1205	Lime
1205	1300	White sand
1300	1380	Red Rock
1380	1387	Black shale
1387	1488	Gray shale
1488	2370	Gray shale
2370	2390	Brown shale
2390	2394	Berea sand
2394	2470	Gray shale
2470	2900	Brown shale
2900	3310	Traverse lime
3310	3505	Gray shale
3505		Dundee
3532	3535	First pay
3551	3554	Second Pay
	3570	Total Depth

1st. 24 hrs. Prod. Est. 900 Bbls.