



Western Michigan University
ScholarWorks at WMU

Legacy Scout Tickets from Pure Oil Company

8-20-2021

MGRRE_PureOilScoutTickets_Brace, Mary_1_unk

MGRRE

Western Michigan University

Follow this and additional works at: <https://scholarworks.wmich.edu/pure>



Part of the Geology Commons

WMU ScholarWorks Citation

MGRRE, "MGRRE_PureOilScoutTickets_Brace, Mary_1_unk" (2021). *Legacy Scout Tickets from Pure Oil Company*. 5255.

<https://scholarworks.wmich.edu/pure/5255>

This Document is brought to you for free and open access via ScholarWorks at WMU. It has been accepted for inclusion in Legacy Scout Tickets from Pure Oil Company by an authorized administrator of ScholarWorks at WMU. See the National Digital Catalogue - Science Base Catalogue for more collections submitted by MGRRE.



MGRRE_PureOilScoutTickets_Brace, Mary_1_unk

API unk

Permit Number unk

Lease Name Brace, Mary

Well Number 1

County Midland

Township 14N

Range 01W

Section 18

2021 DEQ or Pure co_name Gordon Oil Company

Pure Number 180

Latitude 43.6041184

Longitude -84.4788217

THE PURE OIL COMPANY

DATE December 5, 1931

LOCATION REPORT

No. 180

STATE Michigan COUNTY Midland DIST. Lee SEC. 18 TOWN 14-N RANGE 1-W
 WELL No. 1 (SERIAL No. 180) FARM _____ ACRES _____

NAME OF STREAM OR WATERS _____ QUADRANGLE _____
 OPERATOR Gordon Oil Company MAP Lee Township, Midland County

Feet from North Line of Farm

330 " " East " " "
 330 " " South " " "
 330 " " West " " "

Feet from North Line of Section

330 " " East " " "
 330 " " South " " "
 330 " " West " " "

LEGEND

O LOCATION

① RIG

⊕ DRILLING

⊗ GAS WELL

● OIL WELL

⦿ SMALL OIL WELL

⦿ DRY HOLE

⦿ DRY SHOWING OIL

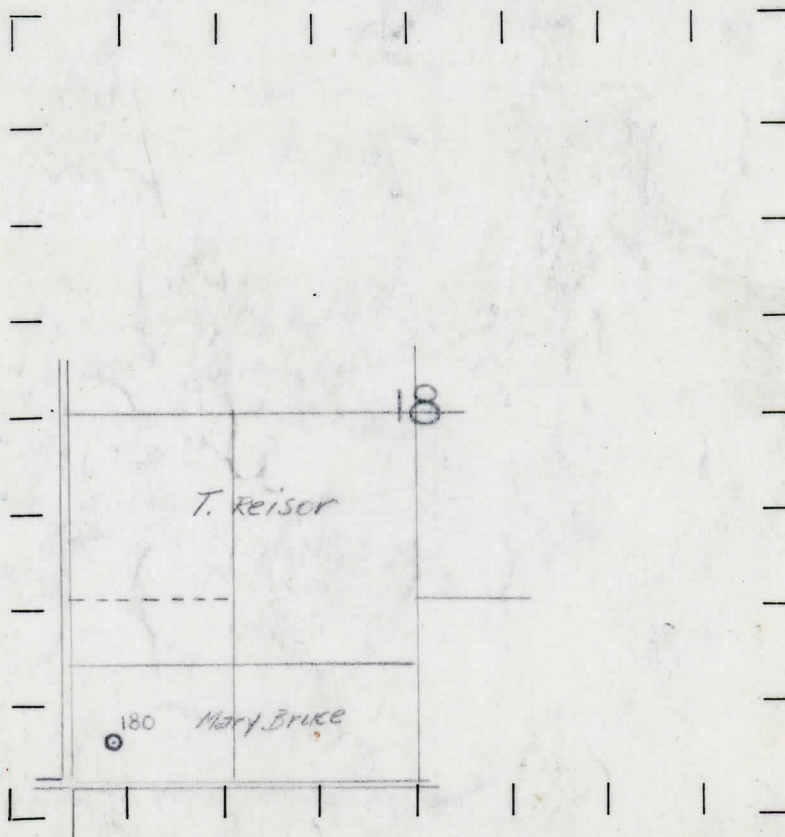
⦿ DRY SHOWING GAS

⦿ ABANDONED LOCATION

⦿ ABANDONED GAS WELL

⦿ ABANDONED OIL WELL

NOTE: Below make tracing from map, (when no map is obtainable make sketch) showing farm, center of section, this location with measurements and also wells, dry holes, or other locations in the vicinity of this location. Make copy to keep for reference and send original to Columbus office.



REMARKS:

SIGNED

Superintendent or Foreman.

DATE-----
December 2, 1931

ГОСНАЦИОН БЕРОБЛ
THE PURE OIL COMPANY

No. 180

DATE 1-30-32		<div style="text-align: center;"> <u>Michigan Producing</u> DIVISION </div>		No. 180	
COMPLETION RECORD					

STATE Michigan COUNTY Midland DIST. Lee SEC. 18 TOWN 18-N RANGE 1-W
TWP. PREC.

WELL No. 1 (SERIAL No. 180) FARM Mary Brace ACRES

NAME OF STREAM OR WATERS _____ QUADRANGLE _____

OPERATOR	Gordon Oil Co.	MAP	Lee Twp.	Midland County
----------	----------------	-----	----------	----------------

LOCATION REPORT SENT IN (DATE) 12-5-32

WELL STARTED (DATE) _____ WELL COMPLETED (DATE) **1-23-32**

OIL WELL

GAS WELL

DRY HOLE

ABANDONED WELL

CROSS OUT THREE OF THE ABOVE
WELL RECORD

DATE OF SHOT _____ NUMBER OF QUARTS _____

1st 24 HOURS PRODUCTION	Location abandoned.	BARRELS OR FEET
-------------------------	---------------------	-----------------

2nd " " " " " "

3rd " " " " " "

4th " " " " " "

5th " " " " " " " "

SAND AND CASING

[illegible]

REMARKS	Location abandoned after moving in rig.
---------	---

NOTE:—MAKE COPY TO KEEP FOR REFERENCE AND SEND ORIGINAL TO CHICAGO OFFICE. LIST MATERIAL CHARGEABLE TO WELL ON OTHER SIDE.

SIGNED G. A. Bell SUPT. OR FOREMAN