



Western Michigan University
ScholarWorks at WMU

Legacy Scout Tickets from Pure Oil Company

8-20-2021

MGRRE_PureOilScoutTickets_Bond, Iva_1_21111012700000

MGRRE

Western Michigan University

Follow this and additional works at: <https://scholarworks.wmich.edu/pure>



Part of the Geology Commons

WMU ScholarWorks Citation

MGRRE, "MGRRE_PureOilScoutTickets_Bond, Iva_1_21111012700000" (2021). *Legacy Scout Tickets from Pure Oil Company*. 5275.

<https://scholarworks.wmich.edu/pure/5275>

This Document is brought to you for free and open access via ScholarWorks at WMU. It has been accepted for inclusion in Legacy Scout Tickets from Pure Oil Company by an authorized administrator of ScholarWorks at WMU. See the National Digital Catalogue - Science Base Catalogue for more collections submitted by MGRRE.



MGRRE_PureOilScoutTickets_Bond, Iva_1_21111012700000

API 21111012700000

Permit Number 1270

Lease Name Bond, Iva

Well Number 1

County Midland

Township 14N

Range 02W

Section 12

2021 DEQ or Pure co_name Oryx Energy Company

Pure Number 207

Latitude 43.61959

Longitude -84.49724

THE PURE OIL COMPANY

DATE 4-15-32

LOCATION REPORT

No. -207-STATE Michigan COUNTY Midland TWP. Greendale SEC. 12 TOWN 14-N RANGE 2-WWELL No. 1 (SERIAL No. 207) FARM IVA E. BOND 80 ACRESNAME OF STREAM OR WATERS _____ QUADRANGLE S-1/2 - NE-1/4OPERATOR Michigan Gas & Oil Co., MAP __________
Feet from North Line of Farm_____
" " East " " "_____
" " South " " "_____
" " West " " "_____
Feet from North Line of Section_____
" " East " " "_____
" " South " " "_____
" " West " " "LEGEND

○ LOCATION

① RIG

⊕ DRILLING

⊗ GAS WELL

● OIL WELL

⦿ SMALL OIL WELL

⦿ DRY HOLE

⦿ DRY SHOWING OIL

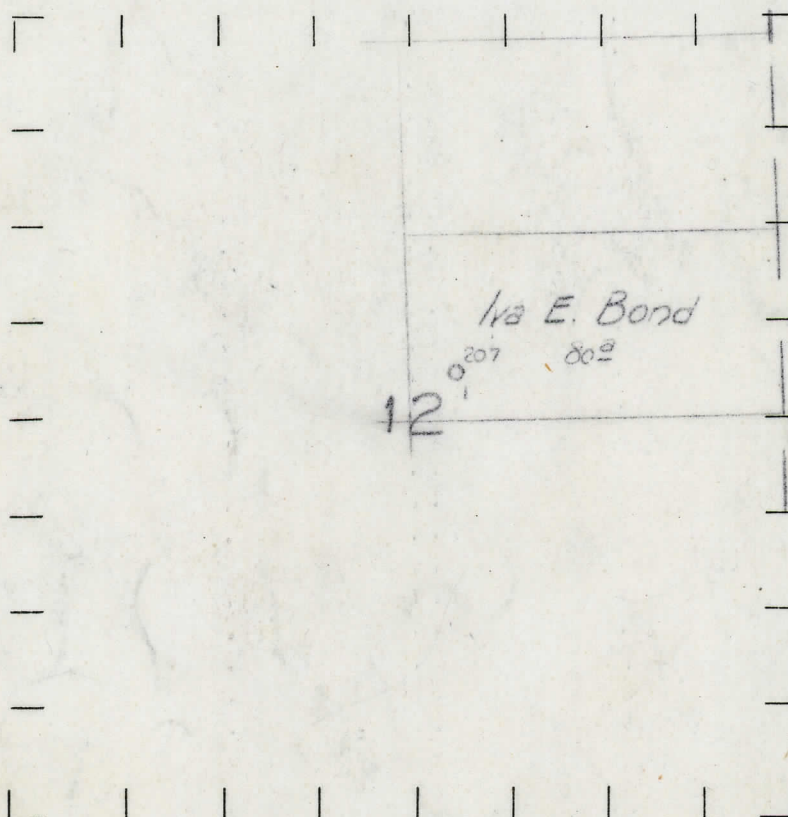
⦿ DRY SHOWING GAS

⦿ ABANDONED LOCATION

⦿ ABANDONED GAS WELL

⦿ ABANDONED OIL WELL

NOTE: Below make tracing from map, (when no map is obtainable make sketch) showing farm, center of section, this location with measurements and also wells, dry holes, or other locations in the vicinity of this location. Make copy to keep for reference and send original to Columbus office.



REMARKS:

Formerly reported under the name as J. B. Rayner

SIGNED _____

Superintendent or Foreman.

DATE 8-25-32 LOCATION REPORT No. 207

STATE Michigan COUNTY Midland DIST. Greendale SEC. 12 TOWN 14-N RANGE 2-W

WELL No. 1 (SERIAL No. 207) FARM State 80 ACRES

NAME OF STREAM OR WATERS QUADRANGLE S1 - NE1

OPERATOR Michigan Gas & Oil Corp. MAP

Feet from North Line of Farm

330 East

330 South

2310 West

Feet from North Line of Section

2310 East

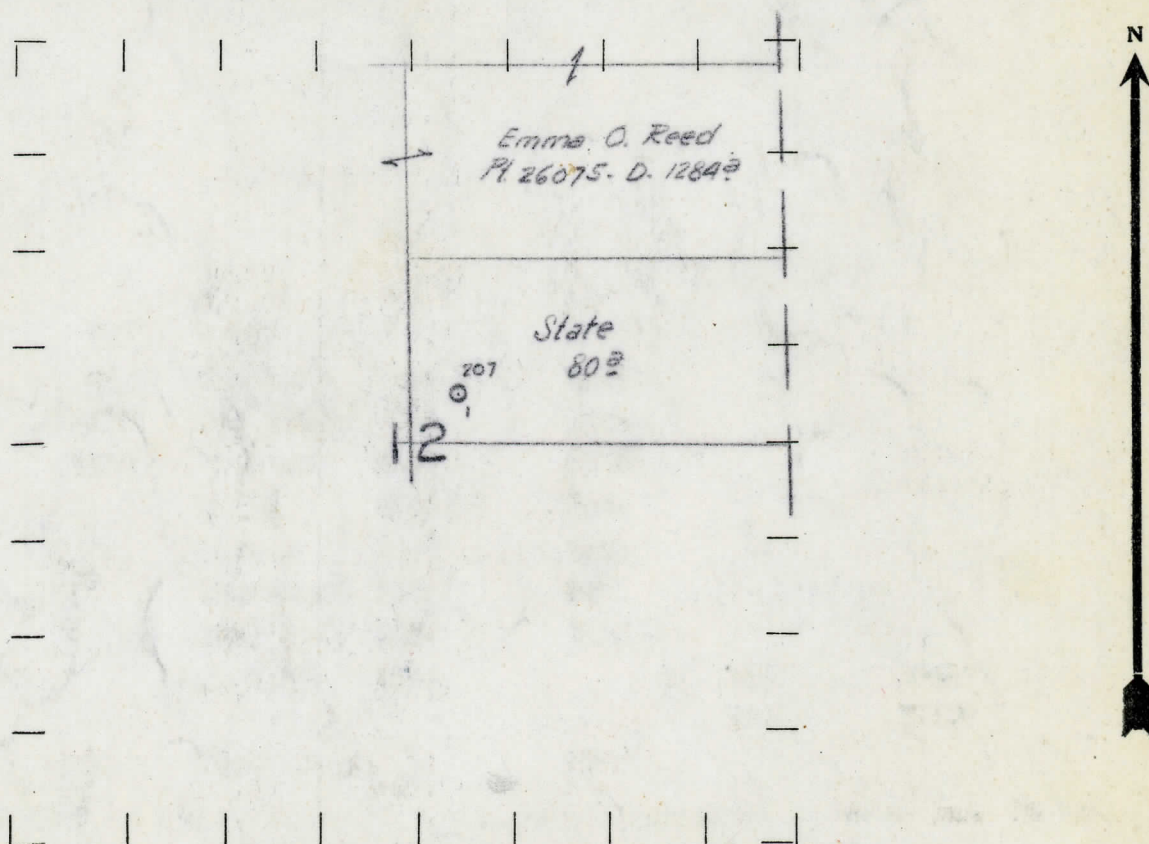
South

West

LEGEND

- O LOCATION
- ① RIG
- ⊕ DRILLING
- ⊗ GAS WELL
- OIL WELL
- ⬮ SMALL OIL WELL
- ⬮ DRY HOLE
- ⬮ DRY SHOWING OIL
- ⬮ DRY SHOWING GAS
- ⬮ ABANDONED LOCATION
- ⬮ ABANDONED GAS WELL
- ⬮ ABANDONED OIL WELL

NOTE: Below make tracing from map, (when no map is obtainable make sketch) showing farm, center of section, this location with measurements and also wells, dry holes, or other locations in the vicinity of this location. Make copy to keep for reference and send original to Columbus office.



REMARKS:

SIGNED

Superintendent or Foreman.

DATE 7-22-32 LOCATION BEBOKI No. -207-

Michigan Producing DIVISION
COMPLETION RECORD

DATE 7-22-32 STATE Michigan COUNTY Midland DIST. Greendale SEC. 12 TOWN 14-N RANGE 2-W

WELL No. 1 (SERIAL No. 207) FARM Iva Bond ACRES 80

NAME OF STREAM OR WATERS QUADRANGLE S₂ - NE₁

OPERATOR Michigan Gas & Oil Co. MAP Greendale Twp. Midland Co.

LOCATION REPORT SENT IN (DATE) 2-26-32

WELL STARTED (DATE) 4-10-32 WELL COMPLETED (DATE) 7-21-32

OIL WELL

~~GAS WELL~~

~~DRY HOLE~~

~~ABANDONED WELL~~

Elevation 674.5

CROSS OUT THREE OF THE ABOVE
WELL RECORD

DATE OF SHOT NUMBER OF QUARTS

1st 24 HOURS PRODUCTION 360 Bbls. BARRELS OR FEET

2nd " " " " " "

3rd " " " " " "

4th " " " " " "

5th " " " " " "

SAND AND CASING

CASING SIZE	WEIGHT	CASING Feet Inches	SAND Name and Nature	TOP	BOTTOM	TOP PAY	BOTTOM PAY	SALT WATER
10"		287'	Drift	0'	260'			
8 1/2"		870	Marshall	1204	1276			
6-5/8"		1366	Red Rock	1276	1356			
5-3/16"		3514	Sunbury	2374	2394			
			Berea	2394	2435			
			Antrim	2477	2884			
			Traverse	2884	3437			
			Bell shale	3437	3506			
			Dundee	3506		3537'	3541'	
						3545'	3546'	
			Total Depth		3546			

REMARKS 1st. Pay from 3537 to 3541' Flowed 70 Bbls. 1st. 24 hrs. and 60 bbls. 2nd. 24 hrs.
Good increase in oil and gas from 3545 to 3546' S.L.M. Flowed 360 bbls. 1st. 24 hrs.
Complete log attached.

DESCRIPTION	QUANTITY	MAKE	SIZE	MATERIAL
-------------	----------	------	------	----------

LIST OF MATERIAL CHARGEABLE TO WELL NO.
 Sec. 12, Greendale Twp. Midland County, Mich.
 OUR MIDLAND #207

OPERATOR: MICHIGAN GAS & OIL

Well started 4-10-32

Completed 7-21-32

<u>CASING</u>	
10"	287'
8 $\frac{1}{2}$ "	870
6-5/8"	1366
5-3/16"	3514

<u>FROM</u>	<u>TO</u>	<u>FORMATION</u>
0'	260'	Drift
260	310	Blue shale
310	333	White sand
333	340	Blue shale
340	414	White sand
414	450	Blue shale
450	489	Sandy shale
489	565	Blue shale
565	596	White sand
596	660	Gray shale
660	668	Red Rock
668	672	Gritty shell
672	700	Sandy shale
700	770	Gray sand
770	778	Lime
778	795	Broken lime
795	805	Sand
805	835	Lime
835	870	Sand
870	940	Shale & shells
940	960	Lime
960	965	Shale
965	972	Lime
972	1007	Shale
1007	1035	Lime
1035	1070	Broken
1070	1080	Sand
1080	1115	Shelly
1115	1126	Shale
1126	1132	Sand
1132	1160	Gritty lime
1160	1175	Sand Water 1163'
1175	1183	Shale
1183	1204	Brown lime
1204	1276	White sand
1276	1356	Red Sandy mud
1356	1357	Shell
1357	1540	Blue shale
1540	2370	Blue shale
2370	2374	Lime
2374	2394	Black shale
2394	2418	Gray shale
2418	2435	Sand
2435	2477	Blue shale
2477	2848	Brown shale
2848	2884	Black shale (Shelly)
2884	2945	Lime
2945	2955	Gray shale
2955	3277	Lime

DESCRIPTION QUANTITY

MAKE

SIZE

MATERIAL

ONE HUNDRED & 30

LIST OF MATERIAL CHARGES TO AND FROM THE S.L.M. CO. INC. REC. 13

FROM

TO

FORMATION

3277	3345	Broken lime
3345	3390	Gray shale
3390	3437	Broken lime
3437	3506	Shale
3506		Dundee
3537	3541	1st. Pay Flowed 70 Bbls. 1st. 24 Hrs.
3545	3546	2nd. Pay " 360 " 1st. 24 Hrs.
	3546'	S.L.M. Total Depth