



Western Michigan University
ScholarWorks at WMU

Legacy Scout Tickets from Pure Oil Company

8-20-2021

MGRRE_PureOilScoutTickets_Adams, Frank_4_21111012770000

MGRRE

Western Michigan University

Follow this and additional works at: <https://scholarworks.wmich.edu/pure>



Part of the Geology Commons

WMU ScholarWorks Citation

MGRRE, "MGRRE_PureOilScoutTickets_Adams, Frank_4_21111012770000" (2021). *Legacy Scout Tickets from Pure Oil Company*. 5278.

<https://scholarworks.wmich.edu/pure/5278>

This Document is brought to you for free and open access via ScholarWorks at WMU. It has been accepted for inclusion in Legacy Scout Tickets from Pure Oil Company by an authorized administrator of ScholarWorks at WMU. See the National Digital Catalogue - Science Base Catalogue for more collections submitted by MGRRE.



MGRRE_PureOilScoutTickets_Adams, Frank_4_21111012770000

API 21111012770000

Permit Number 1277

Lease Name Adams, Frank

Well Number 4

County Midland

Township 14N

Range 02W

Section 10

2021 DEQ or Pure co_name Talbot Oil Company

Pure Number 215

Latitude 43.61429

Longitude -84.54732

THE PURE OIL COMPANY

DATE 2-2-38

LOCATION REPORT

No. 215STATE Michigan COUNTY MidlandDIST. GreendaleTWP. GreendaleSEC. 10TOWN 14-NRANGE 2-WWELL No. 4 (SERIAL No. 215) FARMPREC. Frank Adams

ACRES

NAME OF STREAM OR WATERS

QUADRANGLE NW-SW-SWOPERATOR Geo. Talbot, et alMap Greendale Twp., Midland Co.Geo Talbot, et al

Feet from North Line of Farm

" " East " " "

" " South " " "

" " West " " "

Feet from North Line of Section

" " East " " "

" " South " " "

" " West " " "

LEGEND

○ LOCATION

⊙ RIG

⊕ DRILLING

☼ GAS WELL

● OIL WELL

⦿ SMALL OIL WELL

⊖ DRY HOLE

⦿ DRY SHOWING OIL

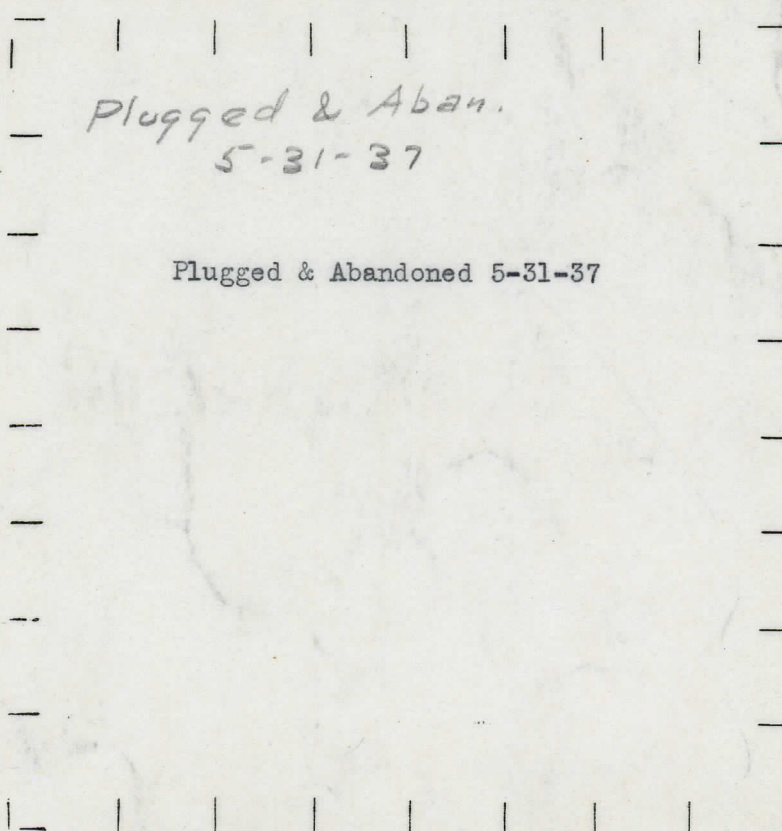
☼ DRY SHOWING GAS

⊖ ABANDONED LOCATION

☼ ABANDONED GAS WELL

⦿ ABANDONED OIL WELL

NOTE: Below make tracing from map, (when no map is obtainable make sketch) showing farm, center of section, this location with measurements and also wells, dry holes, or other locations in the vicinity of this location.



REMARKS:

SIGNED

R. L. Yeager
 Superintendent or Foreman.

DYLE 3-5-28

FOCALION REEBOEL

10° 512

Form 243 10M 6-19-29 P100 POCO

THE PURE OIL COMPANY

DATE 3-26-32

LOCATION REPORT

No. -215-

STATE Michigan COUNTY Midland DIST. Greendale SEC 10 TOWN 14-N RANGE 2-W

WELL No. 4 (SERIAL No. 215) FARM Frank Adams 40 ACRES

NAME OF STREAM OR WATERS QUADRANGLE SW $\frac{1}{4}$ - SW $\frac{1}{4}$

OPERATOR George Talbot MAP

330 Feet from North Line of Farm

" " East " " "

" " South " " "

330 " " West " " "

Feet from North Line of Section

" " East " " "

990 " " South " " "

330 " " West " " "

LEGEND

O LOCATION

① RIG

⊕ DRILLING

⊗ GAS WELL

● OIL WELL

⬮ SMALL OIL WELL

⬮ DRY HOLE

⬮ DRY SHOWING OIL

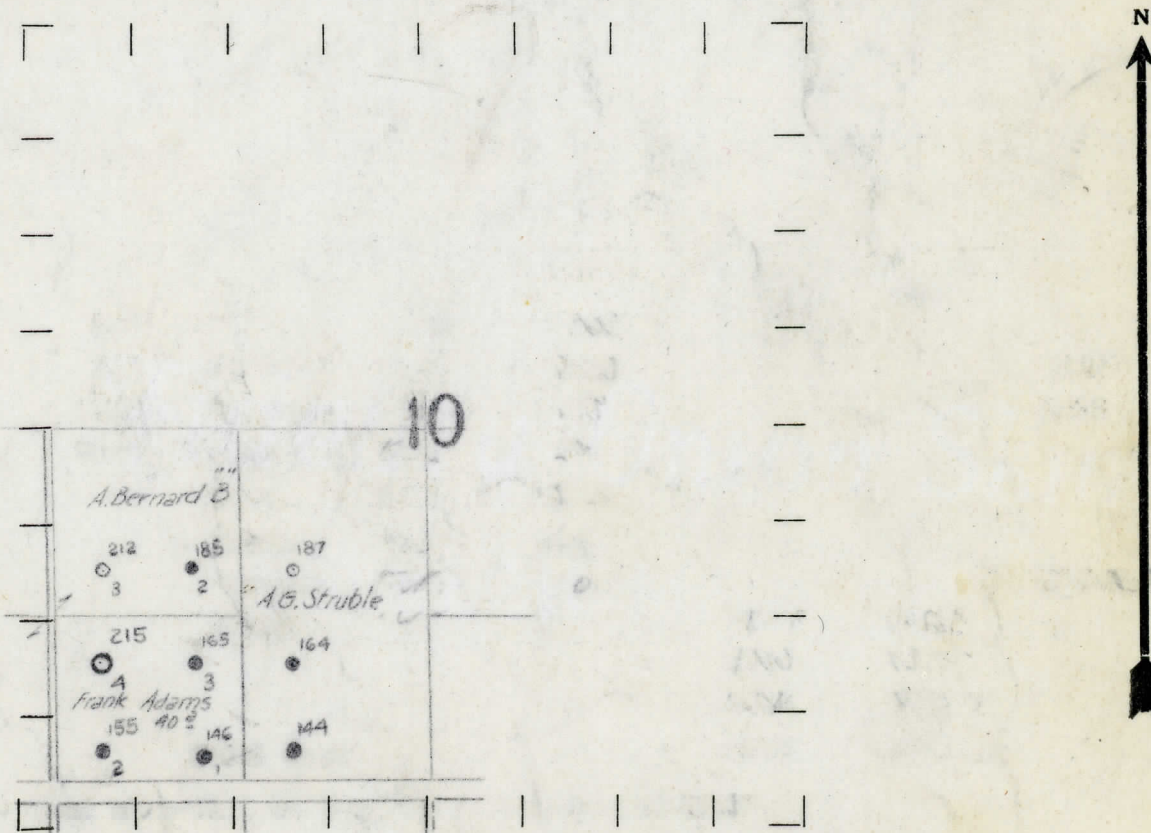
⬮ DRY SHOWING GAS

⬮ ABANDONED LOCATION

⬮ ABANDONED GAS WELL

⬮ ABANDONED OIL WELL

NOTE: Below make tracing from map, (when no map is obtainable make sketch) showing farm, center of section, this location with measurements and also wells, dry holes, or other locations in the vicinity of this location. Make copy to keep for reference and send original to Columbus office.



REMARKS:

SIGNED

Superintendent or Foreman.

DATE **6-11-32** **Michigan Producing** DIVISION **COMPLETION RECORD** No. **-215-**

STATE **Michigan** COUNTY **Midland** DIST. **Greendale** SEC. **10** TOWN **14-N** RANGE **2-W**

WELL No. **4** (SERIAL No. **215**) FARM **Frank Adams** ACRES

NAME OF STREAM OR WATERS QUADRANGLE

OPERATOR **George Talbot et al** MAP **Greendale Twp. Midland County**

LOCATION REPORT SENT IN (DATE) **3-26-32**

WELL STARTED (DATE) **4-27-32** WELL COMPLETED (DATE) **6-8-32**

☐ OIL WELL ☒ ~~WATER~~ ☒ ~~DRILL~~ ☒ ~~WATER~~

CROSS OUT THREE OF THE ABOVE
 WELL RECORD

DATE OF SHOT NUMBER OF QUARTS

1st 24 HOURS PRODUCTION **365 Bbls.** BARRELS OR FEET
 2nd " " " " " "
 3rd " " " " " "
 4th " " " " " "
 5th " " " " " "

SAND AND CASING

CASING SIZE	WEIGHT	CASING Feet Inches	SAND Name and Nature	TOP	BOTTOM	TOP PAY	BOTTOM PAY	SALT WATER
10"		305'	Drift	0'	305'			
8 1/2"		880	Marshall	1141	1294			1145'
6-5/8"		1387	Red Rock	1294	1381			1210
5-3/16"		3156	Sunbury	2375	2401			
			Berea	2401	2480			
			Antrim	2480	2895			
			Traverse	2895	3423			3025 H.F.
			Dundee	3506		3538'	3541'	
						3546	3550	
						3555	3558 ?	
			Total Depth		3577	3573	3575	

REMARKS **Show oil & gas and hole full salt water in Traverse at 3025'.**