



Western Michigan University  
ScholarWorks at WMU

---

Legacy Scout Tickets from Pure Oil Company

---

8-20-2021

**MGRRE\_PureOilScoutTickets\_Bond\_2\_21111013480000**

MGRRE

*Western Michigan University*

Follow this and additional works at: <https://scholarworks.wmich.edu/pure>



Part of the Geology Commons

---

#### WMU ScholarWorks Citation

MGRRE, "MGRRE\_PureOilScoutTickets\_Bond\_2\_21111013480000" (2021). *Legacy Scout Tickets from Pure Oil Company*. 5309.

<https://scholarworks.wmich.edu/pure/5309>

This Document is brought to you for free and open access via ScholarWorks at WMU. It has been accepted for inclusion in Legacy Scout Tickets from Pure Oil Company by an authorized administrator of ScholarWorks at WMU. See the National Digital Catalogue - Science Base Catalogue for more collections submitted by MGRRE.



---

**MGRRE\_PureOilScoutTickets\_Bond\_2\_21111013480000**

API 21111013480000

Permit Number 1348

Lease Name Bond

Well Number 2

County Midland

Township 14N

Range 02W

Section 12

2021 DEQ or Pure co\_name Michigan Gas and Oil Corporation

Pure Number 277

Latitude 43.61958

Longitude -84.49475

## THE PURE OIL COMPANY

DATE Dec. 10, 1935

## LOCATION REPORT

No. 277

STATE Mich. COUNTY Midland DIST. Greendale SEC. 12 TOWN 14 N RANGE 2 W  
 WELL No. 2 (SERIAL No. 277) FARM Iva E. Bond ACRES 277  
 NAME OF STREAM OR WATERS \_\_\_\_\_ QUADRANGLE SE-SW-NE  
 OPERATOR Mich. Gas & Oil Corp. Map Greendale Twp., Midland County  
Mich. Gas & Oil Corp. Greendale Twp - Mid Co.

Feet from North Line of Farm

" " East " " "

" " South " " "

" " West " " "

Feet from North Line of Section

" " East " " "

" " South " 1/4 "" " West " 1/4 "330 330990 990

## LEGEND

○ LOCATION

① RIG

⊕ DRILLING

☼ GAS WELL

● OIL WELL

⦿ SMALL OIL WELL

☼ DRY HOLE

⦿ DRY SHOWING OIL

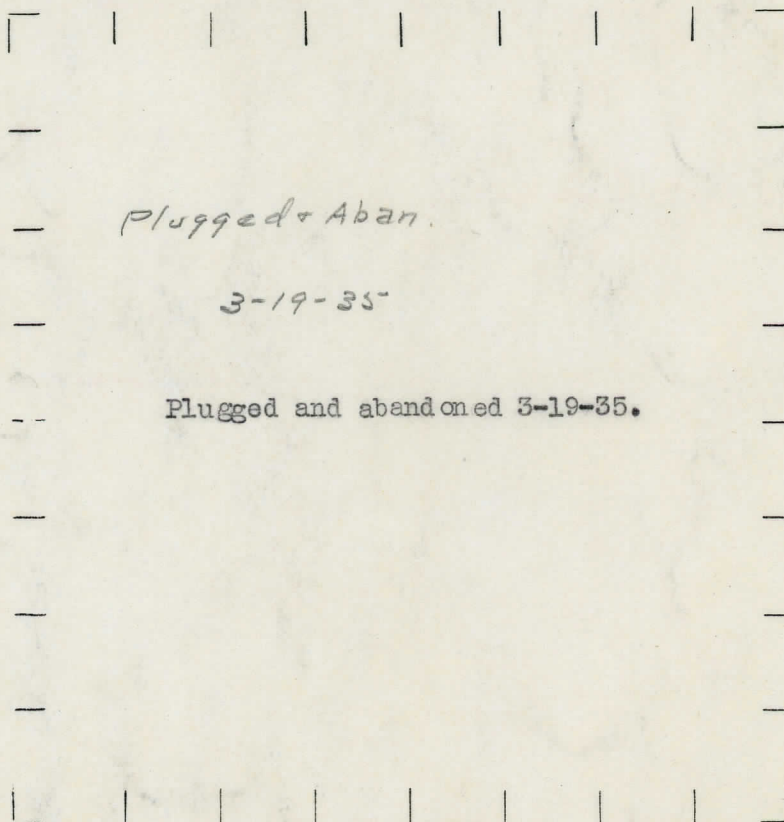
☼ DRY SHOWING GAS

☼ ABANDONED LOCATION

☼ ABANDONED GAS WELL

⦿ ABANDONED OIL WELL

NOTE: Below make tracing from map, (when no map is obtainable make sketch) showing farm, center of section, this location with measurements and also wells, dry holes, or other locations in the vicinity of this location.



REMARKS:

SIGNED

*R. L. Young*  
 Superintendent or Foreman.



DATE 8-20-32

LOCATION REPORT

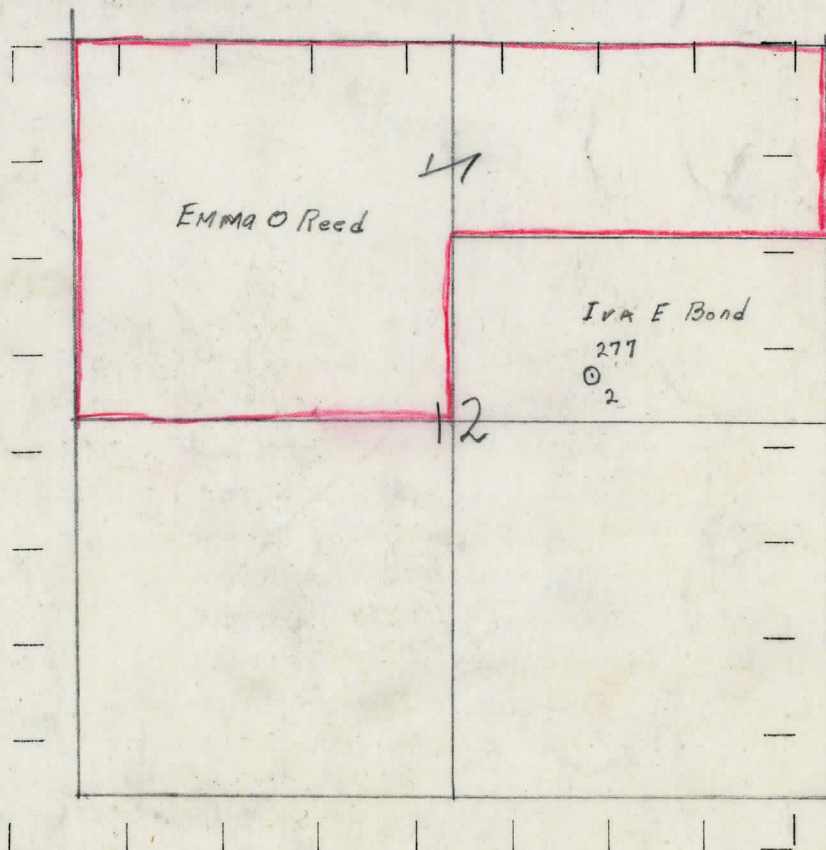
No. -277-

STATE Michigan COUNTY Midland DIST. Greendale TWP. 12 SEC. 14-N TOWN 2-W RANGE  
WELL No. 2 (SERIAL No. 277) FARM Iva Bond ACRES  
NAME OF STREAM OR WATERS QUADRANGLE S<sub>2</sub> - NE<sub>4</sub>  
OPERATOR Mich. Gas & Oil Corp. MAP Greendale Twp. Midland Co.

990 Feet from North Line of Farm  
" " East " " "  
330 " " South " " "  
2310 " " West " " "  
2310 Feet from North Line of Section  
1650 " " East " " "  
" " South " " "  
" " West " " "

- LEGEND**
- |                  |                      |
|------------------|----------------------|
| ○ LOCATION       | ✦ DRY HOLE           |
| ① RIG            | ✦ DRY SHOWING OIL    |
| ⊕ DRILLING       | ✦ DRY SHOWING GAS    |
| ⊗ GAS WELL       | ⊗ ABANDONED LOCATION |
| ● OIL WELL       | ✦ ABANDONED GAS WELL |
| ⬮ SMALL OIL WELL | ⬮ ABANDONED OIL WELL |

NOTE: Below make tracing from map, (when no map is obtainable make sketch) showing farm, center of section, this location with measurements and also wells, dry holes, or other locations in the vicinity of this location. Make copy to keep for reference and send original to Columbus office.



REMARKS:

SIGNED

*[Signature]*

Superintendent or Foreman.



THE PURE OIL COMPANY

DATE 9/24/32  
STATE Michigan COUNTY Midland DIST. TWP. Greendale SEC. 12 TOWN 14-N RANGE 2-W  
WELL No. 2 (SERIAL No. 277) FARM Iva Bond  
NAME OF STREAM OR WATERS QUADRANGLE  
OPERATOR Michigan Gas & Oil Corp. MAP Greendale Twp. - Midland Co.  
LOCATION REPORT SENT IN (DATE) 8/20/30

WELL STARTED (DATE) WELL COMPLETED (DATE) 9/16/32  
OIL WELL GAS WELL DRY HOLE ABANDONED WELL

Elevation 673.2

CROSS OUT THREE OF THE ABOVE  
WELL RECORD

DATE OF SHOT NUMBER OF QUARTS  
1st 24 HOURS PRODUCTION Swabbed 50 bbls. BARRELS OR FEET  
2nd " " " " " "  
3rd " " " " " "  
4th " " " " " "  
5th " " " " " "

SAND AND CASING

| CASING SIZE | WEIGHT | CASING Feet Inches | SAND Name and Nature | TOP  | BOTTOM | TOP PAY | BOTTOM PAY | SALT WATER |
|-------------|--------|--------------------|----------------------|------|--------|---------|------------|------------|
| 10"         |        | 284                | Drift                | 0    | 265    |         |            |            |
| 8 1/2"      |        | 870                | Marshall             | 1202 | 1276   |         |            |            |
| 6-5/8"      |        | 1364               | Red Rock             | 1276 | 1359   |         |            |            |
| 5-3/16"     |        | 3520               | Berea                | 2405 | 2455   |         |            |            |
|             |        |                    | Antrim               | 2484 | 2885   |         |            |            |
|             |        |                    | Traverse             | 2885 | 3340   |         |            |            |
|             |        |                    | Dundee               | 3512 |        | 3546    | 3547       |            |
|             |        |                    |                      |      |        | 3552    | 3553       |            |
|             |        |                    | Total Depth          |      | 3555   |         |            |            |

REMARKS