



Western Michigan University  
ScholarWorks at WMU

---

Legacy Scout Tickets from Pure Oil Company

---

8-20-2021

**MGRRE\_PureOilScoutTickets\_Acker, Cecil & Mary  
I.\_1\_21111015290000**

MGRRE  
*Western Michigan University*

Follow this and additional works at: <https://scholarworks.wmich.edu/pure>



Part of the Geology Commons

---

#### WMU ScholarWorks Citation

MGRRE, "MGRRE\_PureOilScoutTickets\_Acker, Cecil & Mary I.\_1\_21111015290000" (2021). *Legacy Scout Tickets from Pure Oil Company*. 5376.  
<https://scholarworks.wmich.edu/pure/5376>

This Document is brought to you for free and open access via ScholarWorks at WMU. It has been accepted for inclusion in Legacy Scout Tickets from Pure Oil Company by an authorized administrator of ScholarWorks at WMU. See the National Digital Catalogue - Science Base Catalogue for more collections submitted by MGRRE.



---

**MGRRE\_PureOilScoutTickets\_Acker, Cecil & Mary I.\_1\_21111015290000**

API 21111015290000

Permit Number 1529

Lease Name Acker, Cecil & Mary I.

Well Number 1

County Midland

Township 13N

Range 01W

Section 24

2021 DEQ or Pure co\_name Scheid, A. P.

Pure Number 386

Latitude 43.5086

Longitude -84.38839

DATE 6-3-33

## THE PURE OIL COMPANY

## LOCATION REPORT

No. 386STATE Michigan COUNTY Midland DIST. Porter SEC. 24 TOWN 13N RANGE 1WWELL No. 1 (SERIAL No. 386) FARM Cecil Acker 40 ACRESNAME OF STREAM OR WATERS \_\_\_\_\_ QUADRANGLE NW<sup>1</sup>—NW<sup>2</sup>OPERATOR A. P. Scheid MAP \_\_\_\_\_330

Feet from North Line of Farm

" " East " " "

" " South " " "

330

" " West " " "

330

Feet from North Line of Section

" " East " " "

" " South " " "

330

" " West " " "

## LEGEND

O LOCATION

① RIG

⊕ DRILLING

⊗ GAS WELL

● OIL WELL

⦿ SMALL OIL WELL

⦿ DRY HOLE

⦿ DRY SHOWING OIL

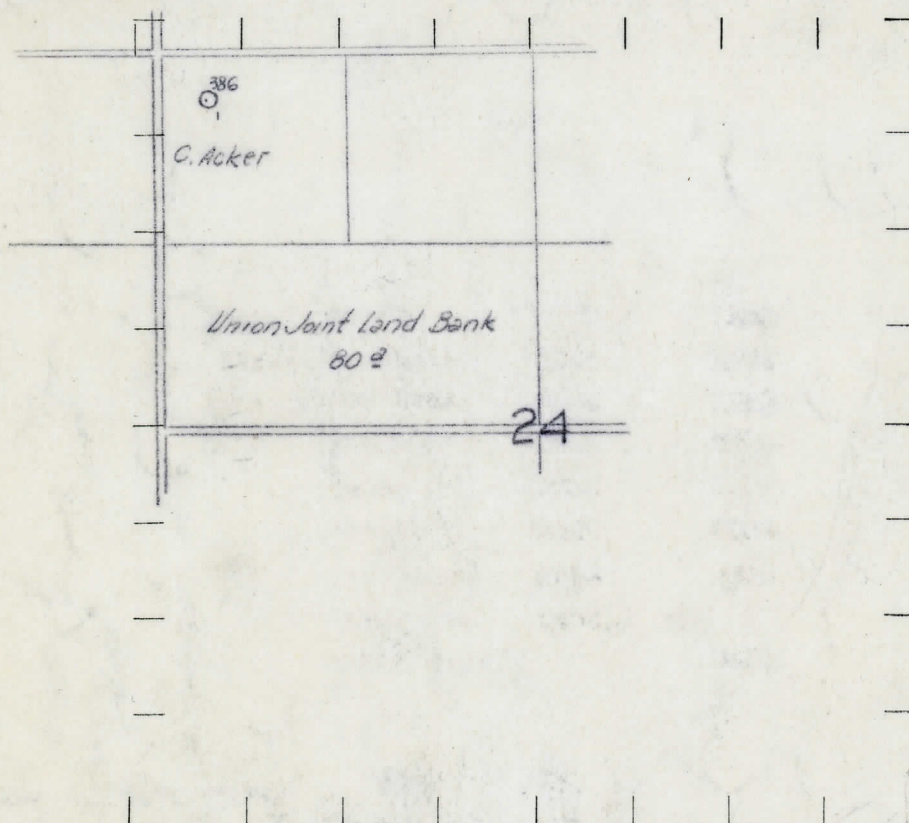
⦿ DRY SHOWING GAS

⦿ ABANDONED LOCATION

⦿ ABANDONED GAS WELL

⦿ ABANDONED OIL WELL

NOTE: Below make tracing from map, (when no map is obtainable make sketch) showing farm, center of section, this location with measurements and also wells, dry holes, or other locations in the vicinity of this location. Make copy to keep for reference and send original to Columbus office.



REMARKS:

SIGNED

Superintendent or Foreman.



DATE 8-4-33 STATE Michigan COUNTY Midland DIST. TWP. Porter SEC. 24 TOWN 13-N RANGE 1-W

WELL No. 1 (SERIAL No. 386) FARM Cecil Acker ACRES 40

Michigan Producing DIVISION  
**COMPLETION RECORD** No. 386

NAME OF STREAM OR WATERS QUADRANGLE NW 1/4 - NW 1/4

OPERATOR A. P. Scheid MAP Porter Twp., Midland County

LOCATION REPORT SENT IN (DATE) 6-3-33

WELL STARTED (DATE) 6-20-33 WELL COMPLETED (DATE) 7-28-33

☐ CUMULATIVE ☐ GAS WELL ☐ DRY HOLE ☐ ~~XXXXXXXXXX~~

Elevation 678.5 CROSS OUT THREE OF THE ABOVE  
WELL RECORD

DATE OF SHOT	NUMBER OF QUARTS
1st 24 HOURS PRODUCTION	Dry hole BARRELS OR FEET
2nd " " "	" " "
3rd " " "	" " "
4th " " "	" " "
5th " " "	" " "

SAND AND CASING

CASING SIZE	WEIGHT	CASING Feet Inches	SAND Name and Nature	TOP	BOTTOM	TOP PAY	BOTTOM PAY	SALT WATER
10"		243	Drift	0	230			
8 1/2"		825	Marshall	1055	1174			
6-5/8"		1265	Red Rock	1174	1240			
5-3/16"		3435	Sunbury	2285	2310			
			Berea	2310	2377			
			Antrim	2420	2809			
			Traverse	2809	3210			
			Dundee	3432	SIM		H.F.	3458-3459
			Total depth		3459			

REMARKS Show oil 2320-2332.