



Western Michigan University  
ScholarWorks at WMU

---

Legacy Scout Tickets from Pure Oil Company

---

8-20-2021

**MGRRE\_PureOilScoutTickets\_Breu, A. F. & Cecile  
M.\_1\_21111015580000**

MGRRE  
*Western Michigan University*

Follow this and additional works at: <https://scholarworks.wmich.edu/pure>



Part of the Geology Commons

---

#### WMU ScholarWorks Citation

MGRRE, "MGRRE\_PureOilScoutTickets\_Breu, A. F. & Cecile M.\_1\_21111015580000" (2021). *Legacy Scout Tickets from Pure Oil Company*. 5396.  
<https://scholarworks.wmich.edu/pure/5396>

This Document is brought to you for free and open access via ScholarWorks at WMU. It has been accepted for inclusion in Legacy Scout Tickets from Pure Oil Company by an authorized administrator of ScholarWorks at WMU. See the National Digital Catalogue - Science Base Catalogue for more collections submitted by MGRRE.



---

MGRRE\_PureOilScoutTickets\_Breu, A. F. & Cecile M.\_1\_21111015580000

API 21111015580000

Permit Number 1558

Lease Name Breu, A. F. & Cecile M.

Well Number 1

County Midland

Township 13N

Range 01W

Section 20

2021 DEQ or Pure co\_name McClanahan Oil Company

Pure Number 413

Latitude 43.50527

Longitude -84.45064

THE PURE OIL COMPANY

DATE July 19, 1939

LOCATION REPORT

No. 413

STATE Michigan COUNTY Midland TWP. Porter SEC. 20 TOWN 13 N RANGE 1 W  
WELL No. 1 (SERIAL No. 413) FARM N. Breu ACRES

NAME OF STREAM OR WATERS QUADRANGLE NE SE NE

OPERATOR McClanahan Oil Company Map Porter Township, Midland County

McClanahan Oil Co.  
Feet from North Line of Farm

" " East " " "

" " South " " "

" " West " " "

Feet from North Line of Section

" " East " " "

" " South " " "

" " West " " "

LEGEND

○ LOCATION

① RIG

⊕ DRILLING

☀ GAS WELL

● OIL WELL

⬮ SMALL OIL WELL

⬮ DRY HOLE

⬮ DRY SHOWING OIL

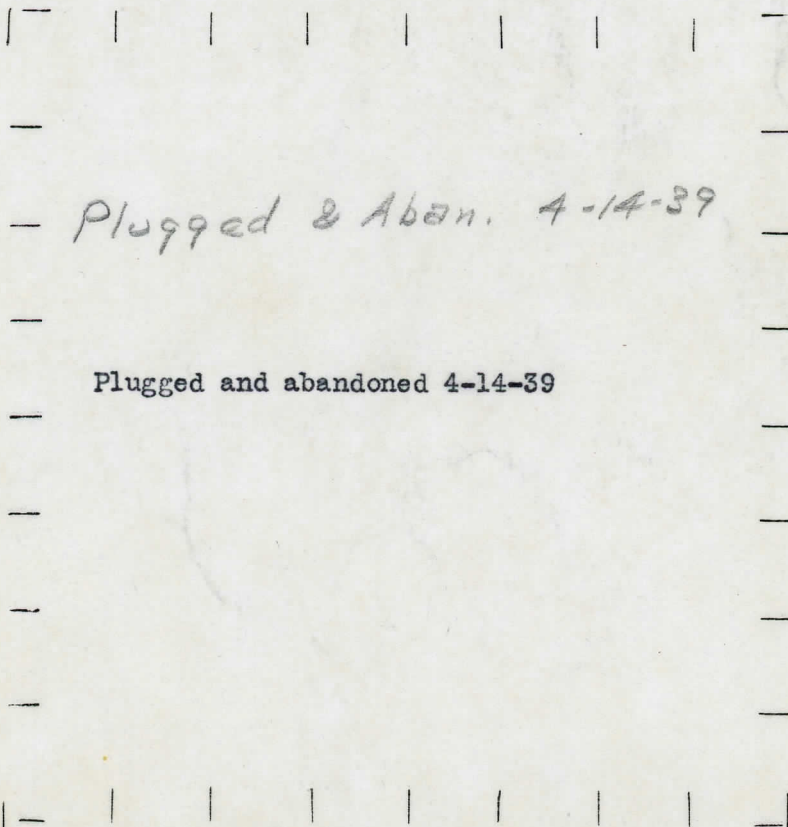
⬮ DRY SHOWING GAS

⬮ ABANDONED LOCATION

⬮ ABANDONED GAS WELL

⬮ ABANDONED OIL WELL

NOTE: Below make tracing from map, (when no map is obtainable make sketch) showing farm, center of section, this location with measurements and also wells, dry holes, or other locations in the vicinity of this location.



REMARKS:

SIGNED

Superintendent or Foreman.



DVLE 9172 J8 J823

LOCATION REPORT  
THE PURE OIL COMPANY

No. 413

DATE 6-30-33

LOCATION REPORT

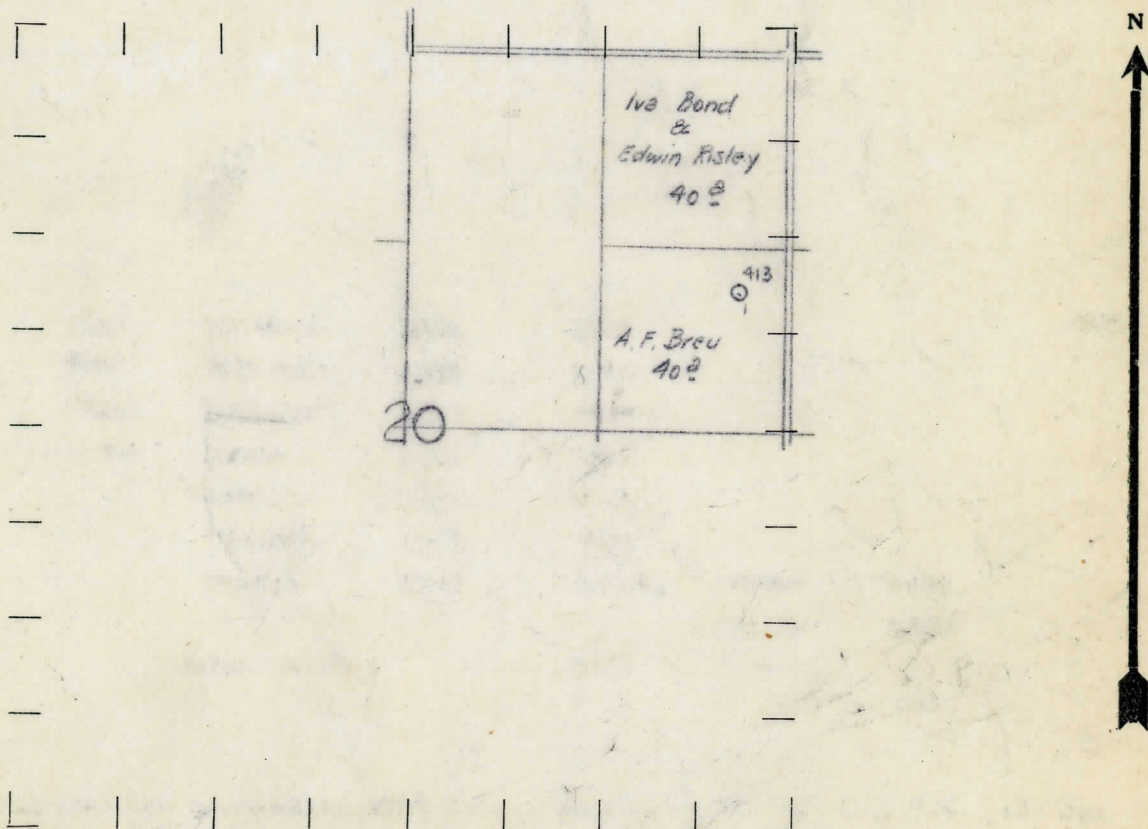
No. 413

STATE Michigan COUNTY Midland DIST. Porter  
WELL No. 1 (SERIAL No. 413) FARM A. F. Breu  
NAME OF STREAM OR WATERS QUADRANGLE SE $\frac{1}{4}$ -NE $\frac{1}{4}$   
OPERATOR McClanahan Oil Co. MAP

330 Feet from North Line of Farm  
330 " " East " " "  
" " South " " "  
" " West " " "  
1650 Feet from North Line of Section  
330 " " East " " "  
" " South " " "  
" " West " " "

- LEGEND**
- LOCATION
  - ⊙ RIG
  - ⊕ DRILLING
  - ⊗ GAS WELL
  - OIL WELL
  - ⦿ SMALL OIL WELL
  - ⦿ DRY HOLE
  - ⦿ DRY SHOWING OIL
  - ⦿ DRY SHOWING GAS
  - ⦿ ABANDONED LOCATION
  - ⦿ ABANDONED GAS WELL
  - ⦿ ABANDONED OIL WELL

NOTE: Below make tracing from map, (when no map is obtainable make sketch) showing farm, center of section, this location with measurements and also wells, dry holes, or other locations in the vicinity of this location. Make copy to keep for reference and send original to Columbus office.



REMARKS:

SIGNED

Superintendent or Foreman.



THE PURE OIL COMPANY

DATE 9/15/33 **COMPLETION RECORD** No. 413

STATE Michigan COUNTY Midland DIST. TWP. Porter SEC. 20 TOWN 13 N RANGE 1 W.

WELL No. 1 (SERIAL No. 413) FARM A. F. Breu ACRES 40

NAME OF STREAM OR WATERS QUADRANGLE SE 1-NE 1

OPERATOR McClanahan Oil Company MAP Porter Township, Midland County

LOCATION REPORT SENT IN (DATE) 6/30/33

WELL STARTED (DATE) 7/27/33 WELL COMPLETED (DATE) 9/11/33

OIL WELL ~~GAS WELL~~ ~~DRY HOLE~~ ~~ABANDONED WELL~~

CROSS OUT THREE OF THE ABOVE  
WELL RECORD

El. 686

DATE OF SHOT NUMBER OF QUARTS

1st 24 HOURS PRODUCTION Est. 635 bbls., natural BARRELS OR FEET  
2nd " " " " " "  
3rd " " " " " "  
4th " " " " " "  
5th " " " " " "

SAND AND CASING

CASING SIZE	WEIGHT	CASING Feet Inches	SAND Name and Nature	TOP	BOTTOM	TOP PAY	BOTTOM PAY	SALT WATER
10"		268'	Marshall	1066	1184			828
8 1/2"		790'	Red Rock	1184	1248			
6-5/8"		1261	Sunbury	2298	2313			
5-3/16"		3376'	Berea	2313	2348			
			Antrim	2395	2783			
			Traverse	2800	3294			
			Dundee	3375	S.L.M.	3392	3403	
						3415	3420	
			Total Depth		3420			

REMARKS NOTE: 1st 24-hour production 462 1/2 bbls., ending at 4 P.M., 9/11/33. 24-hour gauge from 7 A.M. 9/11/33 to 7 A.M. 9/12/33, 543 bbls. 1st 12 hours after drilling lower pay 318 bbls. Show of oil and gas 2928.



THE PURE OIL COMPANY

DATE 12/22/33

CORRECTED

# Michigan Producing \_\_\_\_\_ DIVISION

## COMPLETION RECORD

CORRECTED

No. 413

STATE Michigan COUNTY Midland DIST. Porter TWP. Porter SEC. 20 TOWN 13 N RANGE 1W  
PREC.

WELL No. 1 (SERIAL No. 413) FARM A. F. Breu ACRES 40

NAME OF STREAM OR WATERS \_\_\_\_\_ QUADRANGLE SE-NT

OPERATOR McClanahan Oil Co. MAP Porter Township, Midland County

LOCATION REPORT SENT IN (DATE) 6/30/33

WELL STARTED (DATE) 7/27/33 WELL COMPLETED (DATE) 12/10/33

## OIL WELL

## GAS WELL

**DRY HOLE**

~~ABANDONED WELL~~

Elevation 686'

**CROSS OUT THREE OF THE ABOVE**

## WELL RECORD

DATE OF SHOT.

NUMBER OF QUARTS.

1st 24 HOURS PRODUCTION\_\_\_\_\_2044 Potential

BARRELS OR FEET

[illegible]

3rd " " " " " "

4th " " "

---

5th " " " " " "

## SAND AND CASING

[illegible]

REMARKS	NOTE: Recently deepened from 3420 to 3431'. More pay at 3431'. Potential production estimated at 2044 bbls. oil and 1000 bbls. salt water per day. Additional information to our Completion Report of 9/15/33
---------	---

**NOTE:—MAKE COPY TO KEEP FOR REFERENCE AND SEND ORIGINAL TO CHICAGO OFFICE. LIST MATERIAL CHARGEABLE TO WELL ON OTHER SIDE.**

**SIGNED.**

**SUPT. OR FOREMAN**