



Western Michigan University  
ScholarWorks at WMU

---

Legacy Scout Tickets from Pure Oil Company

---

8-20-2021

**MGRRE\_PureOilScoutTickets\_Carter, H.\_3\_21111015640000**

MGRRE

*Western Michigan University*

Follow this and additional works at: <https://scholarworks.wmich.edu/pure>



Part of the Geology Commons

---

#### WMU ScholarWorks Citation

MGRRE, "MGRRE\_PureOilScoutTickets\_Carter, H.\_3\_21111015640000" (2021). *Legacy Scout Tickets from Pure Oil Company*. 5401.

<https://scholarworks.wmich.edu/pure/5401>

This Document is brought to you for free and open access via ScholarWorks at WMU. It has been accepted for inclusion in Legacy Scout Tickets from Pure Oil Company by an authorized administrator of ScholarWorks at WMU. See the National Digital Catalogue - Science Base Catalogue for more collections submitted by MGRRE.



---

**MGRRE\_PureOilScoutTickets\_Carter, H.\_3\_21111015640000**

API 21111015640000

Permit Number 1564

Lease Name Carter, H.

Well Number 3

County Midland

Township 13N

Range 01W

Section 21

2021 DEQ or Pure co\_name Summit Petroleum Corporation

Pure Number 418

Latitude 43.5070194

Longitude -84.4357973

## THE PURE OIL COMPANY

DATE December 16, 1937

Corrected

## LOCATION REPORT

No. 418STATE Michigan

COUNTY

Midland

DIST.

Porter

SEC.

21

TOWN

13 N

RANGE

1 WWELL No. 3(SERIAL No. 418)

FARM

Carter

ACRES

NAME OF STREAM OR WATERS

QUADRANGLE

SE NW NE

OPERATOR

Stewart Oil CompanyMaudie H. Fisher

Map

Porter Township, Midland County

Feet from North Line of Farm

330 330

" " East " " "

330 330

" " South " " "

" " West " " "

990 990

Feet from North Line of Section

" " East " " "

" " South " " "

990 990" " West " 1 1/4 "

## LEGEND

○ LOCATION

① RIG

⊕ DRILLING

☼ GAS WELL

● OIL WELL

⬮ SMALL OIL WELL

⊙ DRY HOLE

⬮ DRY SHOWING OIL

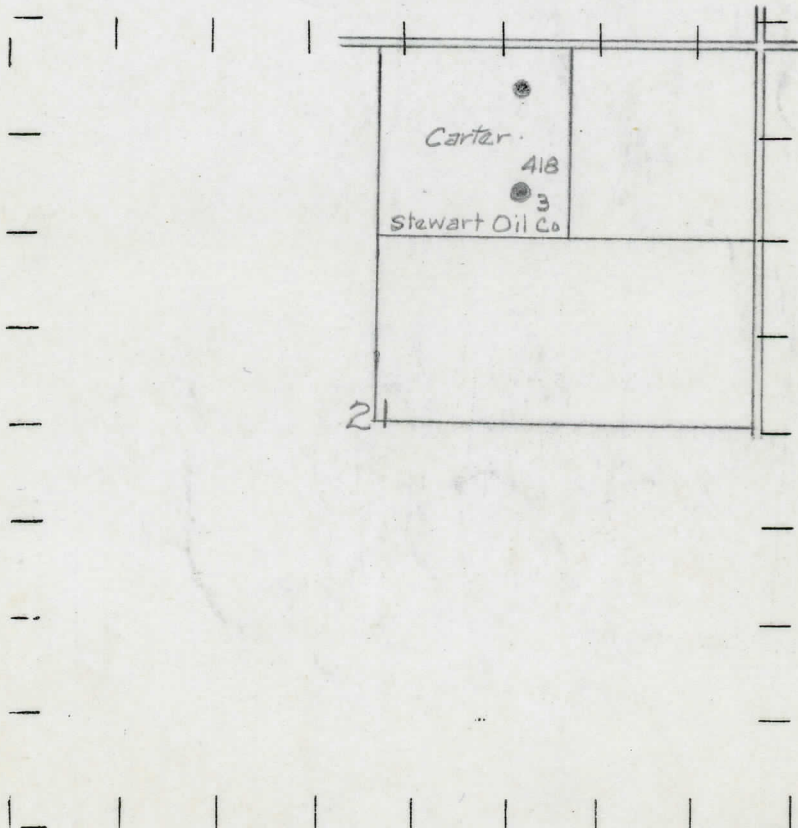
⊙ DRY SHOWING GAS

⊙ ABANDONED LOCATION

☼ ABANDONED GAS WELL

⬮ ABANDONED OIL WELL

NOTE: Below make tracing from map, (when no map is obtainable make sketch) showing farm, center of section, this location with measurements and also wells, dry holes, or other locations in the vicinity of this location.



REMARKS:

SIGNED

Superintendent or Foreman.

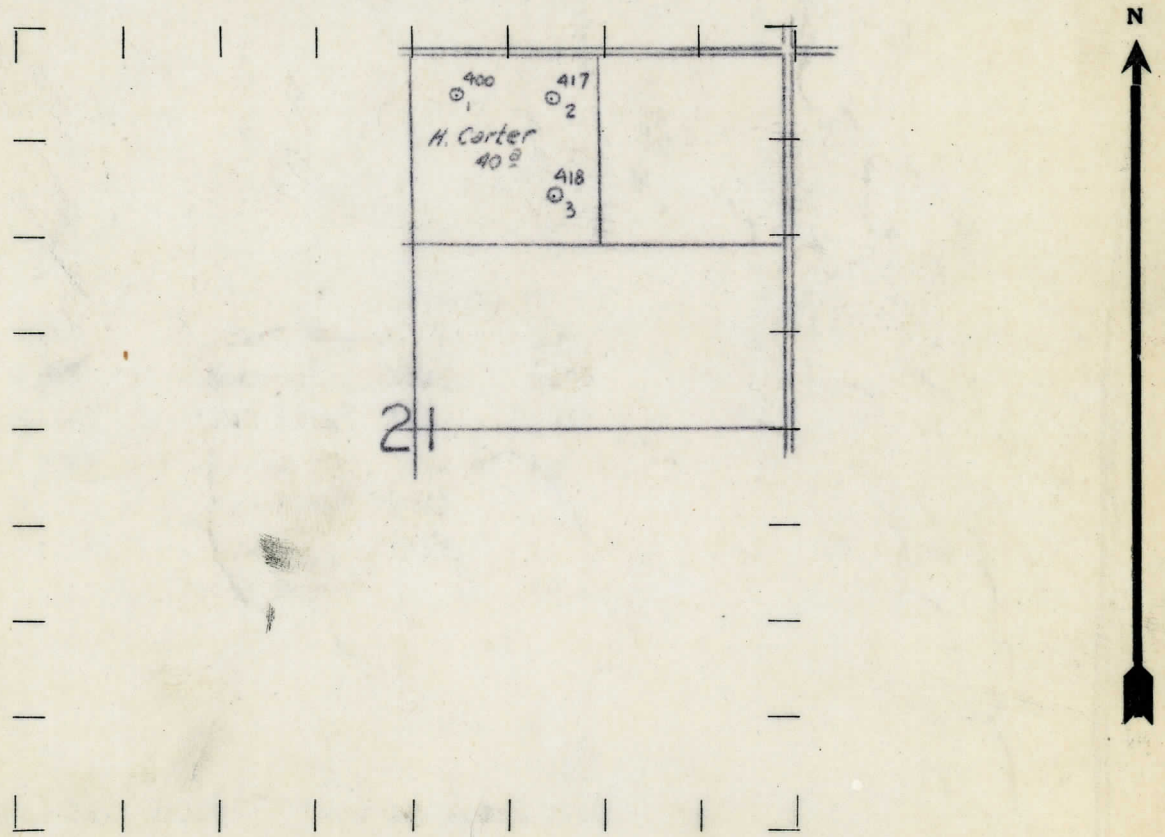
DATE December 19 1933 LOCATION REPORT No. 418

STATE Michigan COUNTY Midland DIST. Porter SEC 21 TOWN 13N RANGE 1W  
WELL No. 3 (SERIAL No. 418) FARM H. Carter 40 ACRES  
NAME OF STREAM OR WATERS QUADRANGLE NW 1/4 - NE 1/4  
OPERATOR Ed. Stewart MAP

Feet from North Line of Farm  
330 " " East " " "  
330 " " South " " "  
" " West " " "  
990 Feet from North Line of Section  
1650 " " East " " "  
" " South " " "  
" " West " " "

- LEGEND
- O LOCATION
  - ① RIG
  - ⊕ DRILLING
  - ⊙ GAS WELL
  - OIL WELL
  - ⬮ SMALL OIL WELL
  - ⬮ DRY HOLE
  - ⬮ DRY SHOWING OIL
  - ⬮ DRY SHOWING GAS
  - ⬮ ABANDONED LOCATION
  - ⬮ ABANDONED GAS WELL
  - ⬮ ABANDONED OIL WELL

NOTE: Below make tracing from map, (when no map is obtainable make sketch) showing farm, center of section, this location with measurements and also wells, dry holes, or other locations in the vicinity of this location. Make copy to keep for reference and send original to Columbus office.



REMARKS:

SIGNED W. E. Thayer  
Superintendent or Foreman.

DATE-----5-5-33

LOCATION BELOW  
THE PURE OIL COMPANY

No. 479

DATE 1/5/34

Michigan Producing DIVISION  
**COMPLETION RECORD**

No. 418

STATE Michigan COUNTY Midland DIST. Porter TWP. 21 SEC. 13 N RANGE 1 W  
PREC.

WELL No. 3 (SERIAL No. 418) FARM H. Carter ACRES 40

NAME OF STREAM OR WATERS \_\_\_\_\_ QUADRANGLE \_\_\_\_\_

OPERATOR Edward Stewart MAP Porter Township, Midland County

LOCATION REPORT SENT IN (DATE) 2/7/33

WELL STARTED (DATE) 11/9/33 WELL COMPLETED (DATE) 12/26/33

## OIL WELL

**MCASWELL**

XDRYXHOLE

ABANDONED VINYL

Elevation 687.6'

**CROSS OUT THREE OF THE ABOVE  
WELL RECORD**

DATE OF SHOT \_\_\_\_\_ NUMBER OF QUARTS \_\_\_\_\_

1st 24 HOURS PRODUCTION 402 hbls. Potential Natural BARRELS OR FEET

2nd " " "

---

3rd " " "

---

4th " " "

---

" " "

5th " " " " " "

## SAND AND CASING

[illegible]

REMARKS	Show Gas 2600'	Show Oil & Gas 2790'
---------	----------------	----------------------

NOTE:—MAKE COPY TO KEEP FOR REFERENCE AND SEND ORIGINAL TO CHICAGO OFFICE. LIST MATERIAL CHARGEABLE TO WELL ON OTHER SIDE.

**SIGNED**

G. A. Bell

**SUPT. OR FOREMAN**

**SUPT. OR FOREMAN**