



Western Michigan University
ScholarWorks at WMU

Legacy Scout Tickets from Pure Oil Company

8-20-2021

MGRRE_PureOilScoutTickets_Baxter, C. L._2_21111015690000

MGRRE

Western Michigan University

Follow this and additional works at: <https://scholarworks.wmich.edu/pure>



Part of the Geology Commons

WMU ScholarWorks Citation

MGRRE, "MGRRE_PureOilScoutTickets_Baxter, C. L._2_21111015690000" (2021). *Legacy Scout Tickets from Pure Oil Company*. 5403.

<https://scholarworks.wmich.edu/pure/5403>

This Document is brought to you for free and open access via ScholarWorks at WMU. It has been accepted for inclusion in Legacy Scout Tickets from Pure Oil Company by an authorized administrator of ScholarWorks at WMU. See the National Digital Catalogue - Science Base Catalogue for more collections submitted by MGRRE.



MGRRE_PureOilScoutTickets_Baxter, C. L._2_21111015690000

API 21111015690000

Permit Number 1569

Lease Name Baxter, C. L.

Well Number 2

County Midland

Township 13N

Range 01W

Section 22

2021 DEQ or Pure co_name Turner Petroleum Corporation

Pure Number 420

Latitude 43.50704

Longitude -84.41325

THE PURE OIL COMPANY

LOCATION REPORT

Date July 21, 1943 Corrected A.F.E. No. _____

Division Mich. Producing District _____ Lease C. L. Baxter

Acres _____ Lease No. _____ Elevation _____ Well No. 2 (Serial No. 420)

Quadrangle SW NE NE Sec. 22 Twp. 13 N Rge. 1 W ~~Porter~~ Porter

Survey _____ County Midland State Michigan

Operator Charles H. Bell Map Porter Township, Midland County

Feet from North Line of Lease

" " East " " "

" " South " " "

" " West " " "

Feet from North Line of Section

" " East " " "

" " South " " "

" " West " " "

LEGEND

○ Location



Gas Well



Oil Well



Gas - Distillate Well



Dry Hole



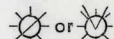
Dry Showing Oil



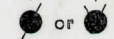
Dry Showing Gas



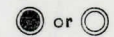
Abandoned Location



Abandoned Gas Well



Abandoned Oil Well



Input Well

See plat - Midland #420.

N

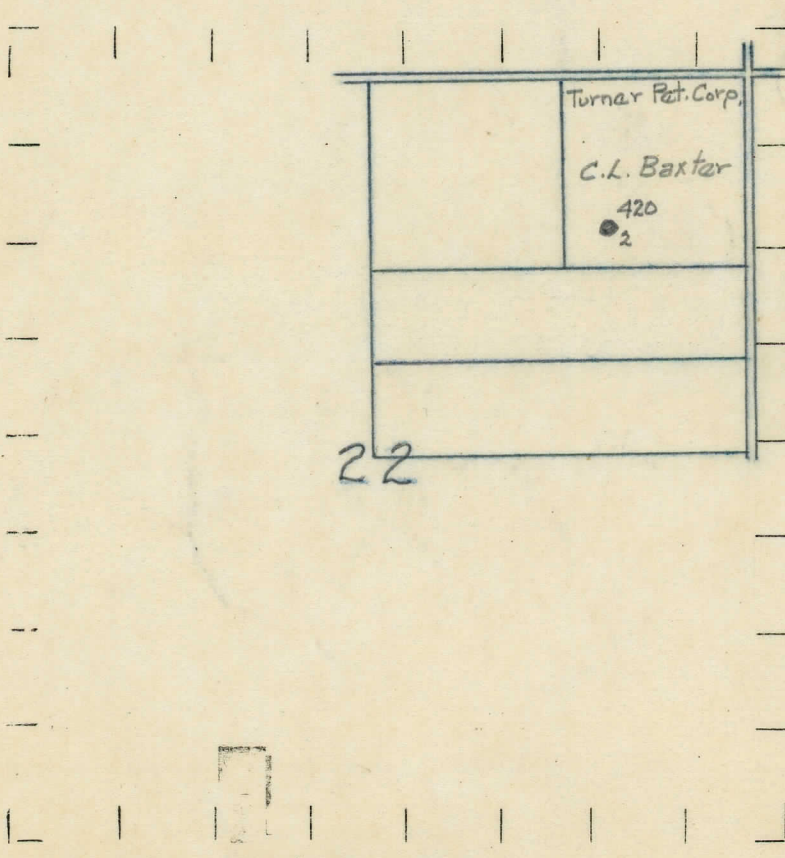
Remarks: Change of operator. Scale _____Submitted by Scouting Dept. - J.S. Approved by _____ Division Manager

Approved by _____ Vice-President - General Manager

REMARKS:

SIGNED

R. L. Yager
Superintendent or Foreman.



DATE 7-14-33

COLLECTED

THE PURE OIL COMPANY

LOCATION REPORT

No. 420STATE Michigan COUNTY Midland DIST. Porter SEC. 22 TOWN 13N RANGE 1WWELL No. 2 (SERIAL No. 420) FARM C. L. Baxter 40 ACRESNAME OF STREAM OR WATERS _____ QUADRANGLE PorterOPERATOR Fred W. Turner et al MAP Porter Twp., Midland Co.

Feet from North Line of Farm

" " East " " "

330 " " South " " "330 " " West " " "990 Feet from North Line of Section990 " " East " " "

" " South " " "

" " West " " "

LEGEND

O LOCATION

① RIG

⊕ DRILLING

☼ GAS WELL

● OIL WELL

◆ SMALL OIL WELL

◆ DRY HOLE

◆ DRY SHOWING OIL

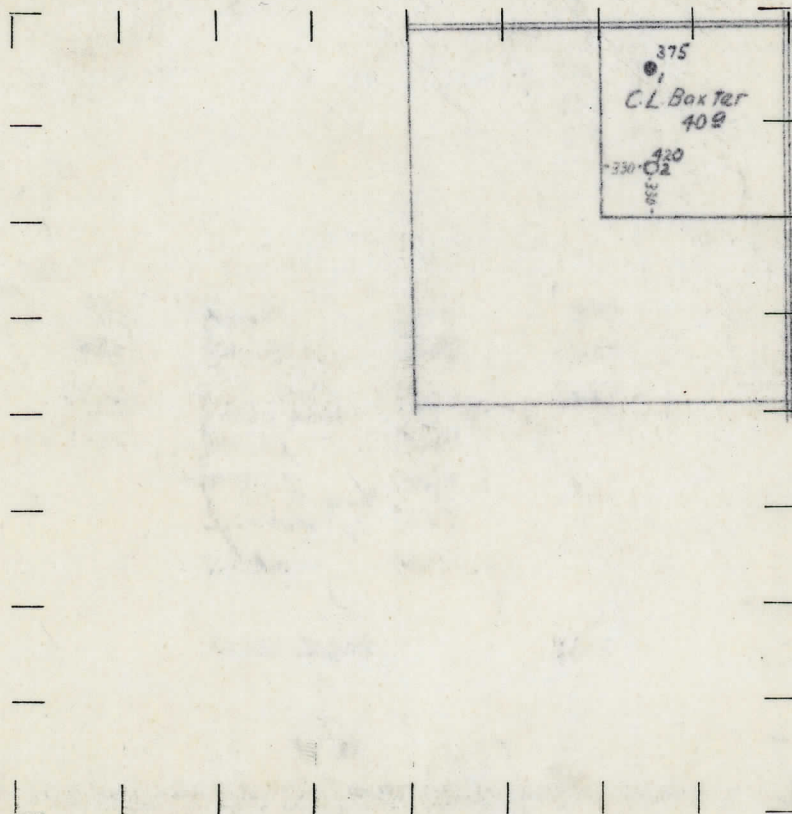
☼ DRY SHOWING GAS

⊕ ABANDONED LOCATION

☼ ABANDONED GAS WELL

◆ ABANDONED OIL WELL

NOTE: Below make tracing from map, (when no map is obtainable make sketch) showing farm, center of section, this location with measurements and also wells, dry holes, or other locations in the vicinity of this location. Make copy to keep for reference and send original to Columbus office.



REMARKS:

SIGNED

Superintendent or Foreman.

Michigan Producing DIVISION
COMPLETION RECORD

No. 420

DATE 8-25-33

STATE Michigan COUNTY Midland DIST. TWP. Porter SEC. 22 TOWN 13N RANGE 1W
PREC.

WELL No. 2 (SERIAL No. 420) FARM C. L. Baxter ACRES 40

NAME OF STREAM OR WATERS QUADRANGLE

OPERATOR Fred W. Turner et al MAP Porter Twp., Midland Co.

LOCATION REPORT SENT IN (DATE) 7-14-33

WELL STARTED (DATE) 7-8-33 WELL COMPLETED (DATE) 8-13-33

OIL WELL

~~GAS WELL~~

~~DRY HOLE~~

~~ABANDONED WELL~~

El. 680.5

CROSS OUT THREE OF THE ABOVE
WELL RECORD

DATE OF Acid SHOT 8-12-33 NUMBER OF QUARTS
1st 24 HOURS PRODUCTION 306 bbls. natural BARRELS OR FEET
1st. " " 527 " after acid " " "
2nd " " " " " " "
3rd " " " " " " "
4th " " " " " " "
5th " " " " " " "

SAND AND CASING

CASING SIZE	WEIGHT	CASING Feet Inches	SAND Name and Nature	TOP	BOTTOM	TOP PAY	BOTTOM PAY	SALT WATER
10"		236'	Drift	0	236			
8 1/4"		764'	Marshall	1072	1162			
6-5/8"		1248'	Red Rock	1162	1248			
5-3/16"		3365'	Berea	2286				
			Antrim	2414				
			Traverse	2781				
			Dundee	3360 SIM				
						3386	3402	
			Total Depth		3406			

REMARKS First acid job not successful, since they were unable to shut the well in more than ten minutes after the acid was run.