



Western Michigan University
ScholarWorks at WMU

Legacy Scout Tickets from Pure Oil Company

8-20-2021

MGRRE_PureOilScoutTickets_Bond Heirs_1_21111015950000

MGRRE

Western Michigan University

Follow this and additional works at: <https://scholarworks.wmich.edu/pure>



Part of the Geology Commons

WMU ScholarWorks Citation

MGRRE, "MGRRE_PureOilScoutTickets_Bond Heirs_1_21111015950000" (2021). *Legacy Scout Tickets from Pure Oil Company*. 5415.

<https://scholarworks.wmich.edu/pure/5415>

This Document is brought to you for free and open access via ScholarWorks at WMU. It has been accepted for inclusion in Legacy Scout Tickets from Pure Oil Company by an authorized administrator of ScholarWorks at WMU. See the National Digital Catalogue - Science Base Catalogue for more collections submitted by MGRRE.



MGRRE_PureOilScoutTickets_Bond Heirs_1_21111015950000

API 21111015950000

Permit Number 1595

Lease Name Bond Heirs

Well Number 1

County Midland

Township 14N

Range 02W

Section 14

2021 DEQ or Pure co_name Collin, C. W.

Pure Number 436

Latitude 43.60695

Longitude -84.52714

WELL REPORT - OUTSIDE OPERATIONS

SERIAL NO.

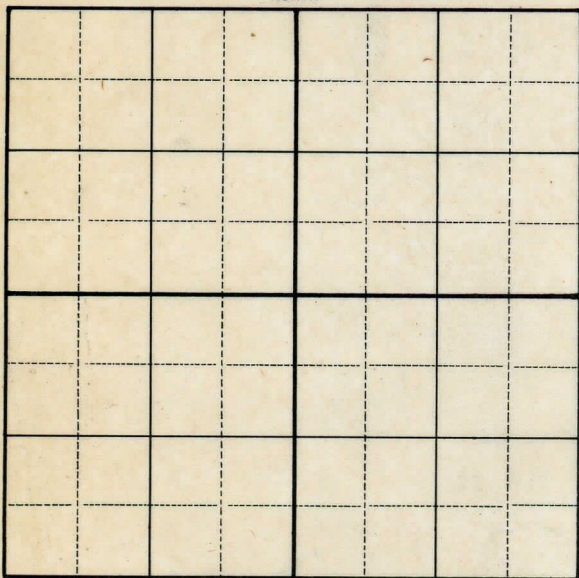
436

STATE Michigan ~~PSA~~ Midland CO.OPERATOR C. W. CollinFARM Bond-Heirs WELL NO. 1TWP. Greendale S. 14 T. 14N R. 2WLOC. SW SW NWWILDCAT ☐ FIELD ☐ FIELD NAME _____

MAP NO. _____ CO-ORD. _____ ELEV. _____

STATUS Plugged and Abandoned 3-13-48Total Depth 3549'

NORTH

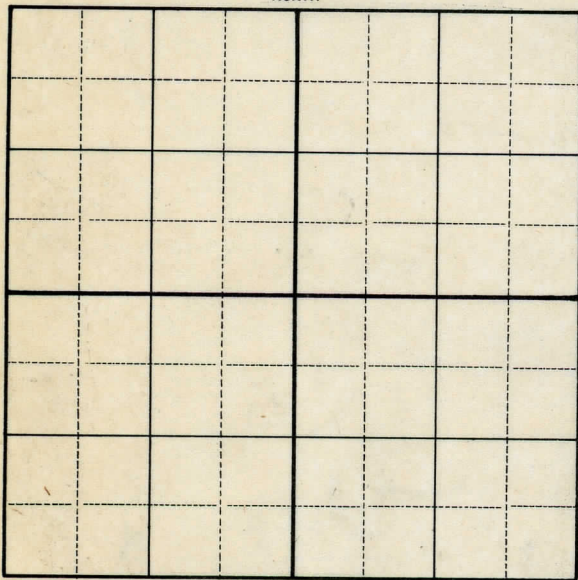
DATE 4-12-48 SCOUT H. J. G.

STATE Michigan PSH Midland
CO. CO.
OPERATOR C. W. Collin
FARM Bond-Heirs WELL NO. 1
TWP. Greendale S. 14 T. 14N R. 2W
SURVEY SW SW NW
LOC. SW SW NW

WILDCAT ☐ FIELD ☐ FIELD NAME _____
MAP NO. _____ CO-ORD. _____ ELEV. _____
STATUS _____

Correcting Operator's Name from Michi-Oil Inc.,
to C. W. Collin.

NORTH



DATE 2-6-48 SCOUT HJG

DATE March 24, 1938

Corrected

LOCATION REPORT

No. 436

STATE Michigan

COUNTY Midland

DIST. Greendale

TWP. Greendale

SEC. 14

TOWN 14 N

RANGE 2 W

WELL No. 1 (SERIAL No. 436) FARM

PREG. Bond-Heirs

ACRES

NAME OF STREAM OR WATERS

QUADRANGLE SW - SW - NW

OPERATOR Michi-Oil, Inc.

Map Greendale Township, Midland County

479479 Michi-Oil Inc.

Greendale - Mid.

Feet from North Line of Farm

" " East " " "

" " South " " "

" " West " " "

202025

Feet from North Line of Section

" " East " " "

" " South " " "

330330

" " West " " "

LEGEND

○ LOCATION

⊕ RIG

⊕ DRILLING

⊕ GAS WELL

● OIL WELL

⊕ SMALL OIL WELL

⊕ DRY HOLE

⊕ DRY SHOWING OIL

⊕ DRY SHOWING GAS

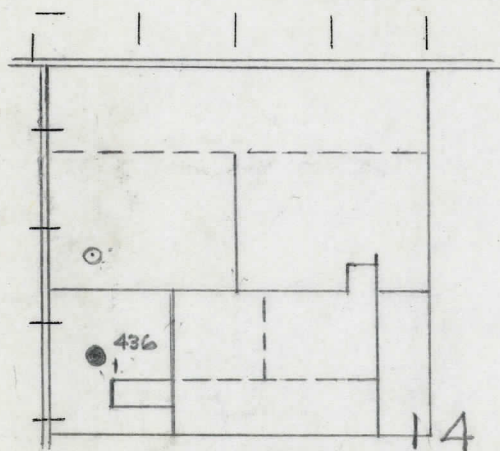
⊕ ABANDONED LOCATION

⊕ ABANDONED GAS WELL

⊕ ABANDONED OIL WELL

NOTE: Below make tracing from map, (when no map is obtainable make sketch) showing farm, center of section, this location with measurements and also wells, dry holes, or other locations in the vicinity of this location.

C. W. Collins



REMARKS: Change in Operator.

SIGNED

R. L. Yeager

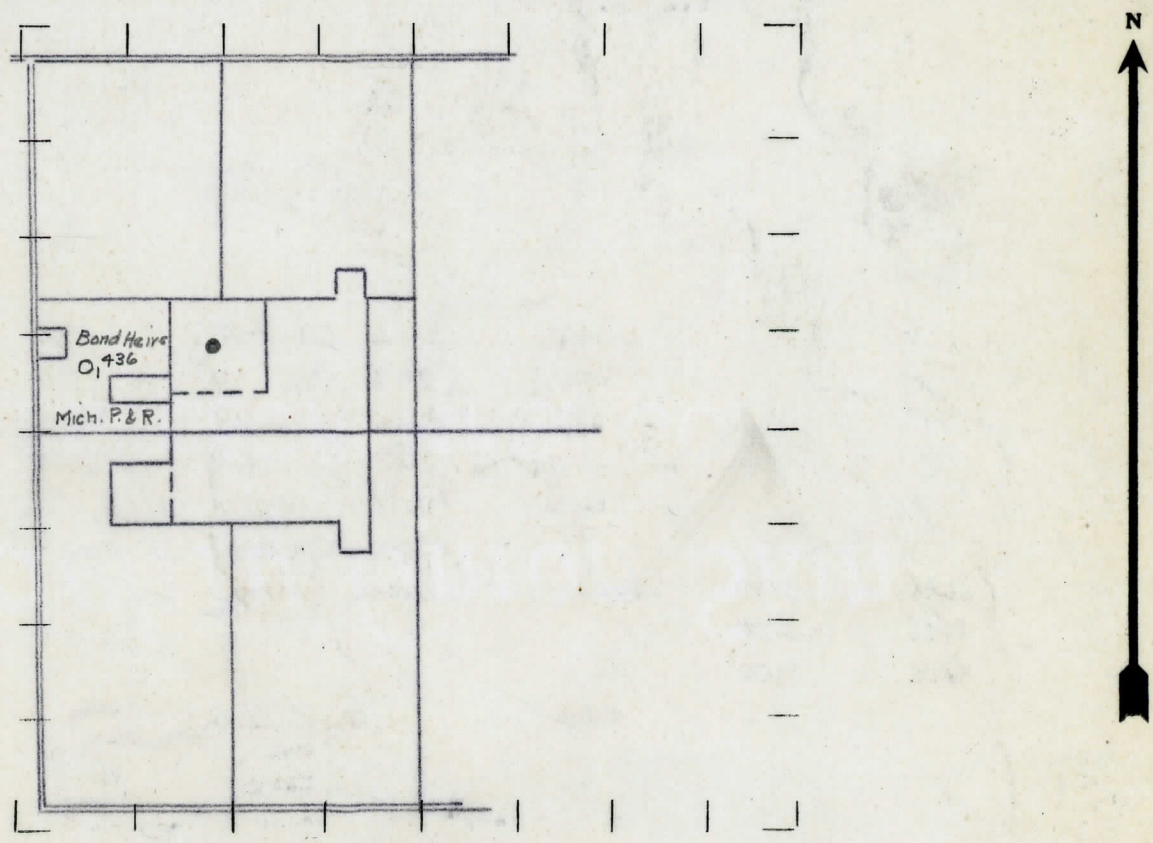
Superintendent or Foreman.

DATE 7-21-33 LOCATION REPORT No. 436
STATE Michigan COUNTY Midland DIST. Greendale TWP. Greendale SEC. 14 TOWN 14N RANGE 2W
WELL No. 1 (SERIAL No. 436) FARM Bond Heirs ACRES
NAME OF STREAM OR WATERS QUADRANGLE SW-SW-NW
OPERATOR Michigan Prod. & Ref. Inc. MAP Midland Co., Greendale Twp.

479 Feet from North Line of Farm
" " East " " "
" " South " " "
2025 " " West " " "
2025 Feet from North Line of Section
" " East " " "
" " South " " "
330 " " West " " "

- LEGEND**
- | | |
|------------------|----------------------|
| ○ LOCATION | ✦ DRY HOLE |
| ① RIG | ✦ DRY SHOWING OIL |
| ⊕ DRILLING | ✦ DRY SHOWING GAS |
| ⊗ GAS WELL | ✦ ABANDONED LOCATION |
| ● OIL WELL | ✦ ABANDONED GAS WELL |
| ⬮ SMALL OIL WELL | ✦ ABANDONED OIL WELL |

NOTE: Below make tracing from map, (when no map is obtainable make sketch) showing farm, center of section, this location with measurements and also wells, dry holes, or other locations in the vicinity of this location. Make copy to keep for reference and send original to Columbus office.



REMARKS:

SIGNED _____
Superintendent or Foreman.

No. 436

SUPT. OR FOREMAN