



Western Michigan University  
ScholarWorks at WMU

---

Legacy Scout Tickets from Pure Oil Company

---

8-20-2021

**MGRRE\_PureOilScoutTickets\_Bushre, Elic\_2\_21111016200000**

MGRRE

*Western Michigan University*

Follow this and additional works at: <https://scholarworks.wmich.edu/pure>



Part of the Geology Commons

---

#### WMU ScholarWorks Citation

MGRRE, "MGRRE\_PureOilScoutTickets\_Bushre, Elic\_2\_21111016200000" (2021). *Legacy Scout Tickets from Pure Oil Company*. 5422.

<https://scholarworks.wmich.edu/pure/5422>

This Document is brought to you for free and open access via ScholarWorks at WMU. It has been accepted for inclusion in Legacy Scout Tickets from Pure Oil Company by an authorized administrator of ScholarWorks at WMU. See the National Digital Catalogue - Science Base Catalogue for more collections submitted by MGRRE.



---

**MGRRE\_PureOilScoutTickets\_Bushre, Elic\_2\_21111016200000**

API 21111016200000

Permit Number 1620

Lease Name Bushre, Elic

Well Number 2

County Midland

Township 13N

Range 01W

Section 22

2021 DEQ or Pure co\_name Smith, C. A.

Pure Number 452

Latitude 43.50342

Longitude -84.41698

THE PURE OIL COMPANY

DATE February 20, 1941

LOCATION REPORT

No. 452

DATE 2-11-33

LOCATION REPORT

No. 452

STATE Michigan COUNTY Midland

~~DIST.~~ TWP. Porter

SEC. 22

TOWN 13N

RANGE 1W

WELL No. 2 (SERIAL No. 452) FARM Elic Bushre

40 ACRES

NAME OF STREAM OR WATERS

QUADRANGLE S<sup>1</sup>/<sub>2</sub> S<sup>1</sup>/<sub>2</sub> NE<sup>1</sup>/<sub>4</sub>

OPERATOR C. A. Smith

Map Porter Township, Midland County

Feet from North Line of Farm

" " East " " "

" " South " " "

" " West " " "

Feet from North Line of Section

" " East " " "

" " South " " "

" " West " " "

LEGEND

○ LOCATION

⊕ RIG

⊕ DRILLING

☼ GAS WELL

● OIL WELL

● SMALL OIL WELL

⊖ DRY HOLE

⊖ DRY SHOWING OIL

⊖ DRY SHOWING GAS

⊖ ABANDONED LOCATION

⊖ ABANDONED GAS WELL

⊖ ABANDONED OIL WELL

NOTE: Below make tracing from map, (when no map is obtainable make sketch) showing farm, center of section, this location with measurements and also wells, dry holes, or other locations in the vicinity of this location.

Plugged and abandoned 7-10-40.

Total Depth 3410'.

N

REMARKS:

SIGNED

Superintendent or Foreman.



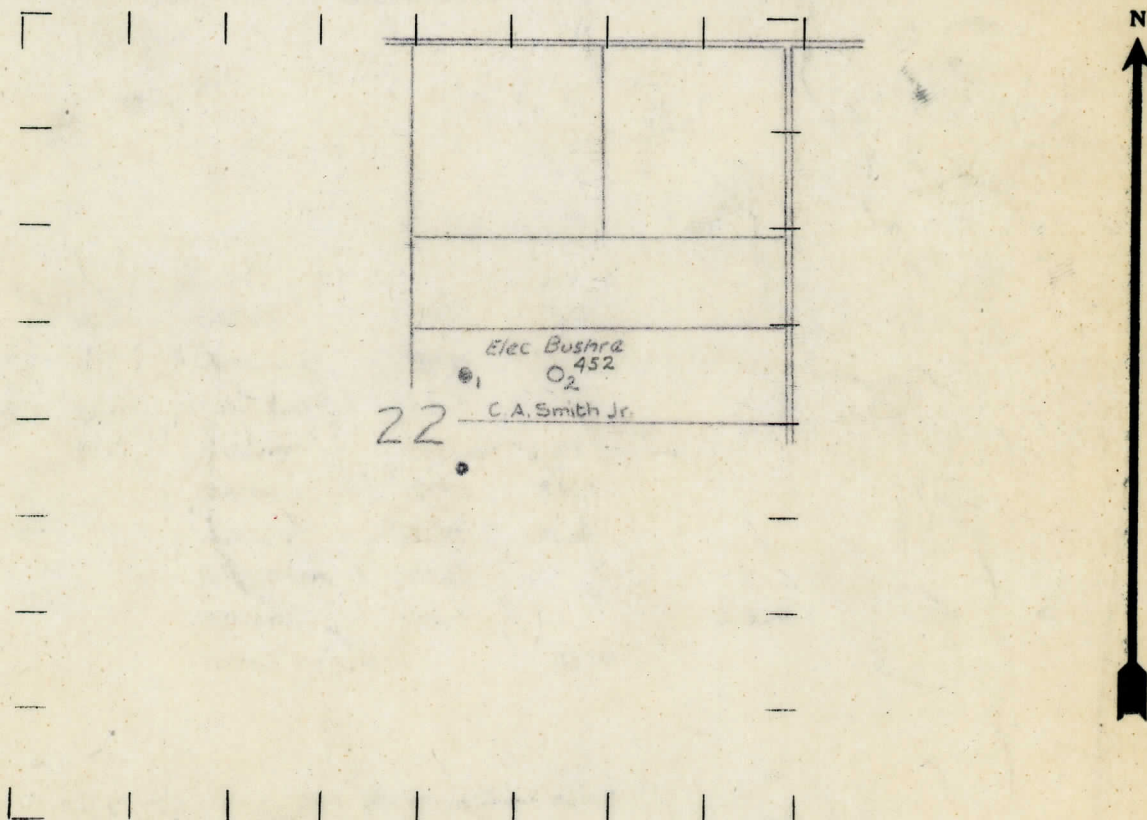
STATE OF MICHIGAN  
LOCATION REPORT  
WELL No. 2 (SERIAL No. 452) FARM Elec Bushra 40 ACRES  
STATE Michigan COUNTY Midland TWP. Porter SEC. 22 TOWN 13N RANGE 17W  
NAME OF STREAM OR WATERS QUADRANGLE S<sub>1</sub>-S<sub>2</sub>-NE<sub>1</sub>  
OPERATOR C. A. Smith MAP Porter Twp., Midland Co.

330 Feet from North Line of Farm  
" " East " " "  
" " South " " "  
990 " " West " " "  
2310 Feet from North Line of Section  
1650 " " East " " "  
" " South " " "  
" " West " " "

LEGEND

- |                  |                      |
|------------------|----------------------|
| ○ LOCATION       | ✦ DRY HOLE           |
| ① RIG            | ✦ DRY SHOWING OIL    |
| ⊕ DRILLING       | ✦ DRY SHOWING GAS    |
| ⊗ GAS WELL       | ⊗ ABANDONED LOCATION |
| ● OIL WELL       | ⊗ ABANDONED GAS WELL |
| ⬮ SMALL OIL WELL | ⬮ ABANDONED OIL WELL |

NOTE: Below make tracing from map, (when no map is obtainable make sketch) showing farm, center of section, this location with measurements and also wells, dry holes, or other locations in the vicinity of this location. Make copy to keep for reference and send original to Columbus office.



REMARKS:

SIGNED

*R. L. Yeager*  
Superintendent or Foreman.



## THE PURE OIL COMPANY

Michigan Producing DIVISION

DATE 12-1-33

## COMPLETION RECORD

No. 452STATE Michigan COUNTY Midland DIST. TWP. Porter SEC. 22 TOWN 13 N RANGE 1WWELL No. 2 (SERIAL No. 452) FARM Elic Bushre ACRES 40

NAME OF STREAM OR WATERS \_\_\_\_\_ QUADRANGLE \_\_\_\_\_

OPERATOR C. A. Smith MAP Porter Township, Midland CountyLOCATION REPORT SENT IN (DATE) 8/11/33WELL STARTED (DATE) 8/23/33 WELL COMPLETED (DATE) 10/20/33

OIL WELL

~~WATER WELL~~~~DRY HOLE~~~~ABANDONED WELL~~Elevation 680.8'

CROSS OUT THREE OF THE ABOVE

## WELL RECORD

DATE OF ~~SHOT~~ Acid 11/26/33 NUMBER OF Gallons 1000

1st 24 HOURS PRODUCTION	160 bbls. natural	BARRELS OR FEET
1st " " "	625 " after acid	" " "
2nd " " "		" " "
3rd " " "		" " "
4th " " "		" " "
5th " " "		" " "

## SAND AND CASING

CASING SIZE	WEIGHT	CASING Feet Inches	SAND Name and Nature	TOP	BOTTOM	TOP PAY	BOTTOM PAY	SALT WATER
10"		246	Stray	1056	1059			
8 1/4"		759	Marshall	1075	1158			
6-5/8		1250	Red Rock	1158	1242			
5-3/16		3384	Sunbury	2268	2288			
			Berea	2288	2345			
			Antrim	2495	2788			
			Traverse	2788				
			Dundee	3370		3396 1/2	3406	
			Total Depth		3410			

REMARKS Potential production 625 bbls. after acid*W. B. Bell*