



Western Michigan University
ScholarWorks at WMU

Legacy Scout Tickets from Pure Oil Company

8-20-2021

MGRRE_PureOilScoutTickets_Campbell_4_21111016240000

MGRRE

Western Michigan University

Follow this and additional works at: <https://scholarworks.wmich.edu/pure>



Part of the Geology Commons

WMU ScholarWorks Citation

MGRRE, "MGRRE_PureOilScoutTickets_Campbell_4_21111016240000" (2021). *Legacy Scout Tickets from Pure Oil Company*. 5425.

<https://scholarworks.wmich.edu/pure/5425>

This Document is brought to you for free and open access via ScholarWorks at WMU. It has been accepted for inclusion in Legacy Scout Tickets from Pure Oil Company by an authorized administrator of ScholarWorks at WMU. See the National Digital Catalogue - Science Base Catalogue for more collections submitted by MGRRE.



MGRRE_PureOilScoutTickets_Campbell_4_21111016240000

API 21111016240000

Permit Number 1624

Lease Name Campbell

Well Number 4

County Midland

Township 13N

Range 01W

Section 17

2021 DEQ or Pure co_name Roosevelt Oil Company

Pure Number 455

Latitude 43.52157

Longitude -84.46534

THE PURE OIL COMPANY

LOCATION REPORT

No. 455

DATE February 20, 1941

DATE December 15, 1933

CHANGE

LOCATION REPORT

CHANGE

STATE Michigan COUNTY Midland

TWP. Porter

SEC. 17

TOWN 13N

RANGE 1W

WELL No. 4 (SERIAL No. 455) FARM

PREG J. W. Campbell

ACRES

NAME OF STREAM OR WATERS

QUADRANGLE SE NW NW

OPERATOR Theodore Oil Company

Map Porter Township, Midland, County

Feet from North Line of Farm

" " East " " "

" " South " " "

" " West " " "

Feet from North Line of Section

" " East " " "

" " South " " "

" " West " " "

LEGEND

○ LOCATION

⊙ RIG

⊕ DRILLING

☼ GAS WELL

● OIL WELL

⬤ SMALL OIL WELL

⊙ DRY HOLE

⬤ DRY SHOWING OIL

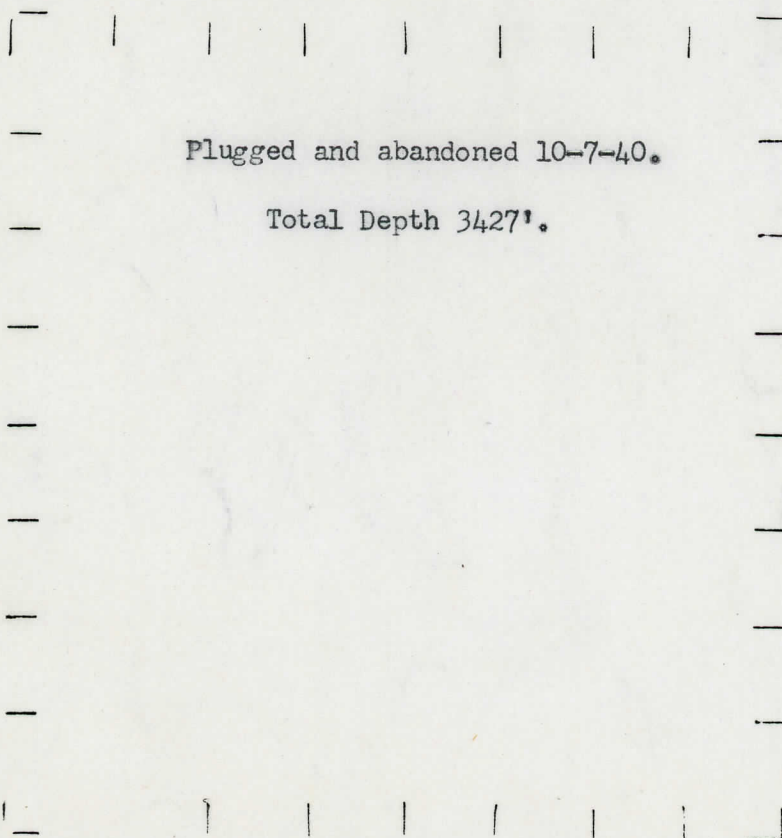
☼ DRY SHOWING GAS

⊙ ABANDONED LOCATION

☼ ABANDONED GAS WELL

⬤ ABANDONED OIL WELL

NOTE: Below make tracing from map, (when no map is obtainable make sketch) showing farm, center of section, this location with measurements and also wells, dry holes, or other locations in the vicinity of this location.



REMARKS:

SIGNED

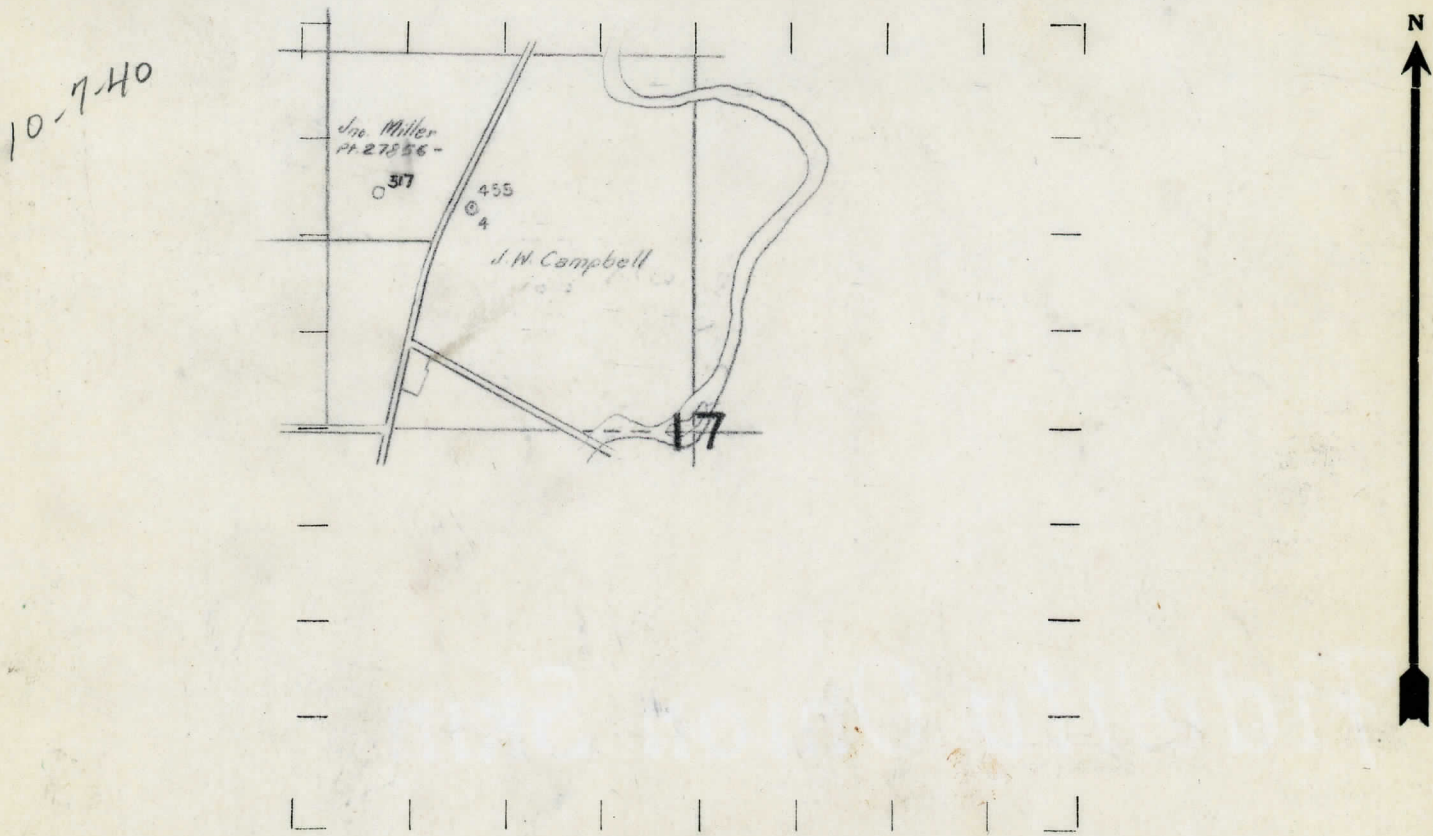
Superintendent or Foreman.

OBSERVATION
 NAME OF ALIEN OR MINER
 WELL No. 4 (SERIAL No. 455) FARM
 STATE Michigan COUNTY Midland DIST. TWP. Porter SEC. 17 TOWN 13 N. RANGE 1W
 WELL No. 4 (SERIAL No. 455) FARM J. W. Campbell ACRES
 NAME OF STREAM OR WATERS QUADRANGLE SE 1/4 NW 1/4
 OPERATOR Theodore Oil Co. MAP Porter Township, Midland County

Feet from North Line of Farm
 " " East " " "
 " " South " " "
 " " West " " "
 1050 Feet from North Line of Section
 " " East " " "
 " " South " " "
 1000 " " West " " "

- LEGEND**
- LOCATION
 - ① RIG
 - ⊕ DRILLING
 - ⊗ GAS WELL
 - OIL WELL
 - ⬮ SMALL OIL WELL
 - ⊕ DRY HOLE
 - ⊕ DRY SHOWING OIL
 - ⊗ DRY SHOWING GAS
 - ⊗ ABANDONED LOCATION
 - ⊗ ABANDONED GAS WELL
 - ⊗ ABANDONED OIL WELL

NOTE: Below make tracing from map, (when no map is obtainable make sketch) showing farm, center of section, this location with measurements and also wells, dry holes, or other locations in the vicinity of this location. Make copy to keep for reference and send original to Columbus office.



REMARKS:

Change in location Report

SIGNED

R. L. Yeager
 Superintendent or Foreman.

DATE December 12 1933

CHANCE

LOCATION REPORT

CHANCE

No. 455

DATE 8-11-33

LOCATION REPORT

STATE Michigan COUNTY Midland DIST. Porter SEC 17 TOWN 13N RANGE 1W
WELL No. 4 (SERIAL No. 455) FARM J. W. Campbell ACRES

NAME OF STREAM OR WATERS QUADRANGLE NW-SW-NE

OPERATOR Theodore Oil Co. MAP Porter Twp., Midland Co.

Feet from North Line of Farm

240 " " East " " "

990 " " South " " "

" " West " " "

Feet from North Line of Section

" " East " " "

990 " " South " $\frac{1}{4}$ "

140 " " West " $\frac{1}{4}$ "

LEGEND

○ LOCATION

① RIG

⊕ DRILLING

⊗ GAS WELL

● OIL WELL

⬮ SMALL OIL WELL

⬮ DRY HOLE

⬮ DRY SHOWING OIL

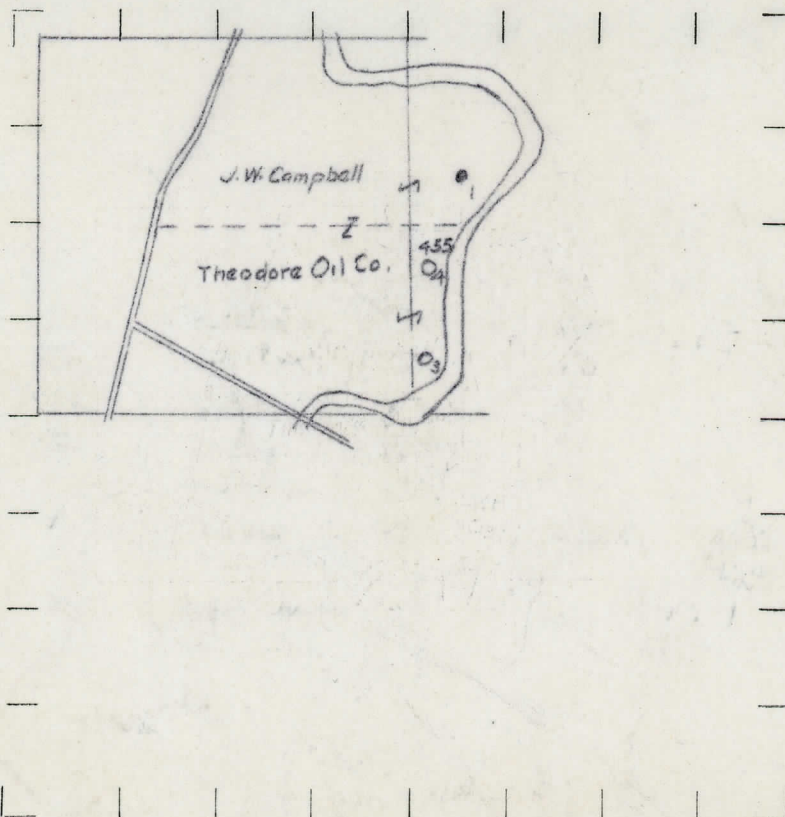
⬮ DRY SHOWING GAS

⬮ ABANDONED LOCATION

⬮ ABANDONED GAS WELL

⬮ ABANDONED OIL WELL

NOTE: Below make tracing from map, (when no map is obtainable make sketch) showing farm, center of section, this location with measurements and also wells, dry holes, or other locations in the vicinity of this location. Make copy to keep for reference and send original to Columbus office.



REMARKS:

SIGNED

R. L. Yeager
Superintendent or Foreman

Michigan Producing
COMPLETION RECORD

455

June 22, 1934

Michigan Midland Porter 17 13N 1W
4 455 J. W. Campbell

SE-NW-NW

Theodore Oil Company

Porter Township, Midland County

8/11/33

12/10/33

2/7/34

Oil Well

XXXXXXXXXX

XXXXXXXXXXXXXXXXXXXX

XXXXXXXXXXXXXXXXXXXXXXXXXXXX

Elevation 681.1'

Est. 50 bbls., natural

10"	352'	Marshall	1020	1193		
8 1/4"	751	Red Rock	1193	1265		
6-5/8"	1274	Sunbury	2280	2300		
5-3/16	3380	Berea	2300			
		Traverse	2805			
		Dundee	3380	S.L.M.	3403	3405
					3410	
		Total Depth	3427			