



Western Michigan University
ScholarWorks at WMU

Legacy Scout Tickets from Pure Oil Company

8-20-2021

MGRRE_PureOilScoutTickets_Carter_2_21111016950000

MGRRE

Western Michigan University

Follow this and additional works at: <https://scholarworks.wmich.edu/pure>



Part of the Geology Commons

WMU ScholarWorks Citation

MGRRE, "MGRRE_PureOilScoutTickets_Carter_2_21111016950000" (2021). *Legacy Scout Tickets from Pure Oil Company*. 5447.

<https://scholarworks.wmich.edu/pure/5447>

This Document is brought to you for free and open access via ScholarWorks at WMU. It has been accepted for inclusion in Legacy Scout Tickets from Pure Oil Company by an authorized administrator of ScholarWorks at WMU. See the National Digital Catalogue - Science Base Catalogue for more collections submitted by MGRRE.



MGRRE_PureOilScoutTickets_Carter_2_21111016950000

API 21111016950000

Permit Number 1695

Lease Name Carter

Well Number 2

County Midland

Township 13N

Range 01W

Section 18

2021 DEQ or Pure co_name Carter Lease, Incorporated

Pure Number 494

Latitude 43.51611

Longitude -84.48281

THE PURE OIL COMPANY

DATE February 20, 1941

THE LOCATION REPORT

No. 494DATE August 30, 1933

LOCATION REPORT

No.

STATE Michigan COUNTY Midland DIST. Porter TWP. Porter SEC. 18 TOWN 13N RANGE 1W
WELL No. 2 (SERIAL No. 494) FARM Wm. M. Carter ACRESNAME OF STREAM OR WATERS QUADRANGLE NW NE SWOPERATOR Carter Lease Inc. Map Porter Township, Midland County

Feet from North Line of Farm

" " East " " "

" " South " " "

" " West " " "

Feet from North Line of Section

" " East " " "

" " South " " "

" " West " " "

LEGEND

○ LOCATION

① RIG

⊕ DRILLING

☀ GAS WELL

● OIL WELL

◆ SMALL OIL WELL

⊙ DRY HOLE

◆ DRY SHOWING OIL

⊙ DRY SHOWING GAS

⊙ ABANDONED LOCATION

☀ ABANDONED GAS WELL

◆ ABANDONED OIL WELL

NOTE: Below make tracing from map. (when no map is obtainable make sketch) showing farm, center of section, this location with measurements and also wells, dry holes, or other locations in the vicinity of this location.

Plugged and abandoned 1-1-40.

Total Depth 3434'.

N

REMARKS:

SIGNED

Superintendent or Foreman.

OBSERVATOR Carter Lease Inc.

NAME OF SURVEYOR OR MEASURER

WELL No. 5 (SERIAL No. 494) FARM

STATE Michigan COUNTY Midland TWP. Porter SEC. 18 TOWN 13 N RANGE 1 W.

WELL No. 2 (SERIAL No. 494) FARM Wm. M. Carter ACRES

NAME OF STREAM OR WATERS

OPERATOR Carter Lease Incorporated MAP Porter Township, Midland County

330 Feet from North Line of Farm

" " East " " "

" " South " " "

330 " " West " " "

330 Feet from North Line of Section

900 " " East " " "

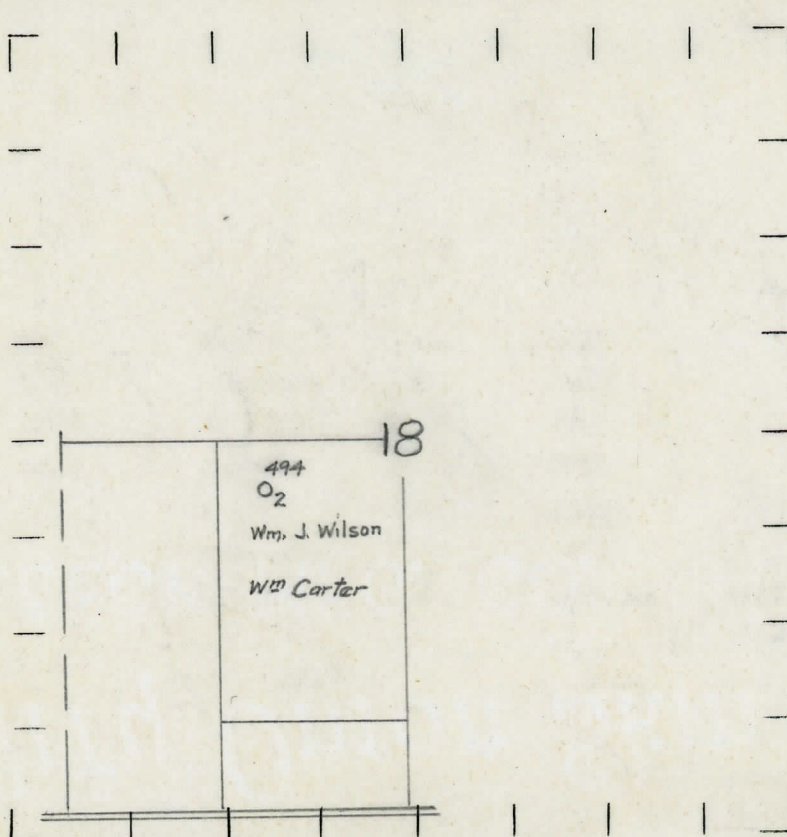
" " South " " "

" " West " " "

LEGEND

- LOCATION
- ① RIG
- ⊕ DRILLING
- ⊗ GAS WELL
- OIL WELL
- ⬮ SMALL OIL WELL
- ⬮ DRY HOLE
- ⬮ DRY SHOWING OIL
- ⬮ DRY SHOWING GAS
- ⬮ ABANDONED LOCATION
- ⬮ ABANDONED GAS WELL
- ⬮ ABANDONED OIL WELL

NOTE: Below make tracing from map, (when no map is obtainable make sketch) showing farm, center of section, this location with measurements and also wells, dry holes, or other locations in the vicinity of this location. Make copy to keep for reference and send original to Columbus office.



REMARKS: Formerly carried as W. J. Wilson Tr., Operator

SIGNED

Superintendent or Foreman.

THE PURE OIL COMPANY

DATE 12/22/33 Michigan Producing DIVISION **COMPLETION RECORD** No. 494STATE Michigan COUNTY Midland DIST. TWP. Porter SEC. 18 TOWN 13 N RANGE 1 W
PREC.WELL No. 2 (SERIAL No. 494) FARM Wm. Carter ACRESNAME OF STREAM OR WATERS QUADRANGLE NW-NE-SWOPERATOR Wm. J. Wilson MAP Porter Township, Midland CountyLOCATION REPORT SENT IN (DATE) 8/30/33WELL STARTED (DATE) 8/31/33 WELL COMPLETED (DATE) 12/4/33

OIL WELL

~~CASE WELL~~~~IDEAL WELLS~~~~ABANDONED WELL~~Elevation 691'CROSS OUT THREE OF THE ABOVE
WELL RECORD

DATE OF SHOT NUMBER OF QUARTS

1st 24 HOURS PRODUCTION 677 Bbls. potential BARRELS OR FEET

2nd " " " " " "

3rd " " " " " "

4th " " " " " "

5th " " " " " "

SAND AND CASING

CASING SIZE	WEIGHT	CASING Feet Inches	SAND Name and Nature	TOP	BOTTOM	TOP PAY	BOTTOM PAY	SALT WATER
10"		332	Marshall	1062	1205			
8 $\frac{1}{2}$ "		814	Red Rock	1205	1310			
6-5/8"		1339	Sunbury	2325	2335			
5-3/16"		3404	Berea	2335	2355			
			Antrim	2420	2819			
			Traverse	2819				
			Dundee	3401	C.T. M.	3419	3422 $\frac{1}{2}$	
						3432	3434	
			Total Depth		3434			

REMARKS

G. H. Bell