



Western Michigan University
ScholarWorks at WMU

Legacy Scout Tickets from Pure Oil Company

8-20-2021

MGRRE_PureOilScoutTickets_Brooks Est._1_21111017380000

MGRRE

Western Michigan University

Follow this and additional works at: <https://scholarworks.wmich.edu/pure>



Part of the Geology Commons

WMU ScholarWorks Citation

MGRRE, "MGRRE_PureOilScoutTickets_Brooks Est._1_21111017380000" (2021). *Legacy Scout Tickets from Pure Oil Company*. 5456.

<https://scholarworks.wmich.edu/pure/5456>

This Document is brought to you for free and open access via ScholarWorks at WMU. It has been accepted for inclusion in Legacy Scout Tickets from Pure Oil Company by an authorized administrator of ScholarWorks at WMU. See the National Digital Catalogue - Science Base Catalogue for more collections submitted by MGRRE.



MGRRE_PureOilScoutTickets_Brooks Est._1_21111017380000

API 21111017380000

Permit Number 1738

Lease Name Brooks Est.

Well Number 1

County Midland

Township 13N

Range 01E

Section 11

2021 DEQ or Pure co_name McClanahan Oil Company

Pure Number 508

Latitude 43.54033

Longitude -84.31929

THE PURE OIL COMPANY

DATE September 22, 1933

LOCATION REPORT

No. 508

STATE Michigan COUNTY Midland DIST. Mt. Haley SEC. 11 TOWN 13 N RANGE 1 E
 WELL No. 1 (SERIAL No. 508) FARM John Brooks, Est. ACRES _____
 NAME OF STREAM OR WATERS _____ QUADRANGLE SW-SW-SR
 OPERATOR McClanahan Oil Company MAP Mt. Haley Township, Midland County

Feet from North Line of Farm

330 " " East " " "330 " " South " " "

" " West " " "

Feet from North Line of Section

2310 " " East " " "330 " " South " " "

" " West " " "

LEGEND

O LOCATION

① RIG

⊕ DRILLING

⊗ GAS WELL

● OIL WELL

⬮ SMALL OIL WELL

⬮ DRY HOLE

⬮ DRY SHOWING OIL

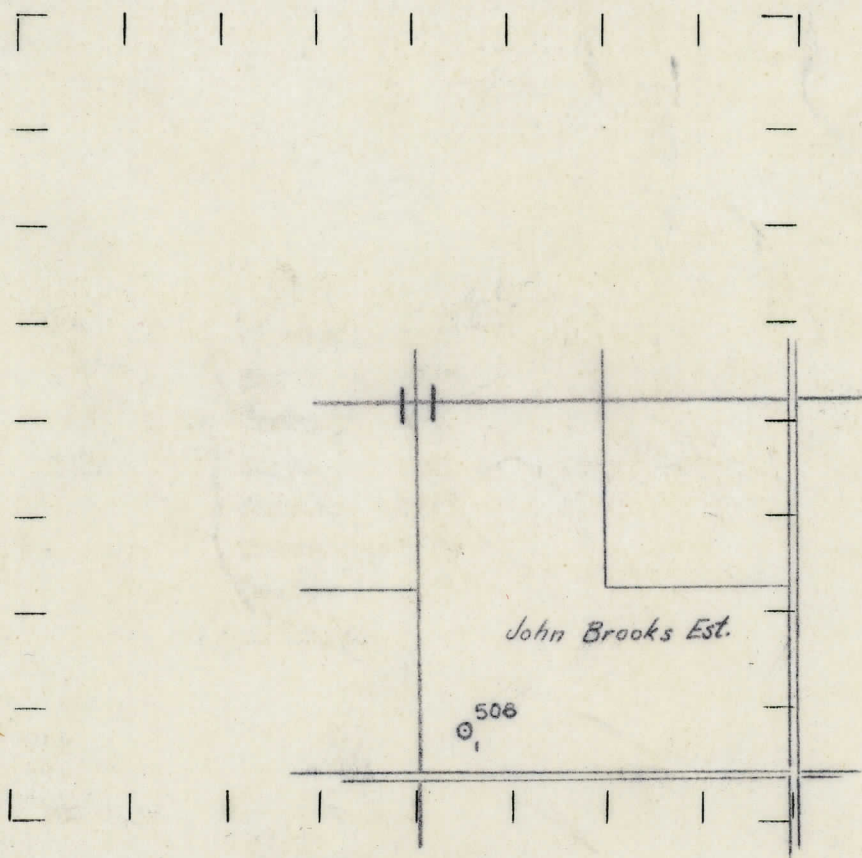
⬮ DRY SHOWING GAS

⬮ ABANDONED LOCATION

⬮ ABANDONED GAS WELL

⬮ ABANDONED OIL WELL

NOTE: Below make tracing from map, (when no map is obtainable make sketch) showing farm, center of section, this location with measurements and also wells, dry holes, or other locations in the vicinity of this location. Make copy to keep for reference and send original to Columbus office.



REMARKS:

SIGNED

Superintendent or Foreman.

THE PURE OIL COMPANY

Michigan Producing DIVISION

DATE 3/1/34 **COMPLETION RECORD** No. 508

STATE Michigan COUNTY Midland DIST. TWP. Mt. Haley SEC. 11 TOWN 13 N RANGE 1 E

WELL No. 1 (SERIAL No. 508) FARM John Brooks Estate ACRES

NAME OF STREAM OR WATERS QUADRANGLE SW-SW-SE

OPERATOR McClanahan Oil Co. MAP Mt. Haley Township, Midland County

LOCATION REPORT SENT IN (DATE) 9/22/33

WELL STARTED (DATE) 11/29/33 WELL COMPLETED (DATE) 2/24/34

☐ ~~WATER~~ ☐ ~~WATER~~ ☐ DRY HOLE ☐ ~~WATER~~

Elevation 651'

CROSS OUT THREE OF THE ABOVE
WELL RECORD

DATE OF SHOT NUMBER OF QUARTS

1st 24 HOURS PRODUCTION Dry Hole BARRELS OR FEET
2nd " " " " " "
3rd " " " " " "
4th " " " " " "
5th " " " " " "

SAND AND CASING

CASING SIZE	WEIGHT	CASING Feet Inches	SAND Name and Nature	TOP	BOTTOM	TOP PAY	BOTTOM PAY	SALT WATER
10"		239	Marshall	1121	1239			
8 1/4"		845	Red Rock	1239	1337			
6-5/8"		1431	Sunbury	2351	2371			
5-3/16"		3481	Berea	2371	2449		Hole Full	2889
			Antrim	2502	2889			
			Traverse	2889				
			Dundee	3475				
			Total Depth		3571		Blk. Water	3571
(Complete log sent to Chicago) with Completion Report								

REMARKS

Very Light Show Oil 2889'