



Western Michigan University  
ScholarWorks at WMU

---

Legacy Scout Tickets from Pure Oil Company

---

8-20-2021

**MGRRE\_PureOilScoutTickets\_Atkinson, T. W.\_1\_21111017780000**

MGRRE

*Western Michigan University*

Follow this and additional works at: <https://scholarworks.wmich.edu/pure>



Part of the Geology Commons

---

#### WMU ScholarWorks Citation

MGRRE, "MGRRE\_PureOilScoutTickets\_Atkinson, T. W.\_1\_21111017780000" (2021). *Legacy Scout Tickets from Pure Oil Company*. 5469.

<https://scholarworks.wmich.edu/pure/5469>

This Document is brought to you for free and open access via ScholarWorks at WMU. It has been accepted for inclusion in Legacy Scout Tickets from Pure Oil Company by an authorized administrator of ScholarWorks at WMU. See the National Digital Catalogue - Science Base Catalogue for more collections submitted by MGRRE.



---

MGRRE\_PureOilScoutTickets\_Atkinson, T. W.\_1\_21111017780000

API 21111017780000

Permit Number 1778

Lease Name Atkinson, T. W.

Well Number 1

County Midland

Township 15N

Range 01E

Section 26

2021 DEQ or Pure co\_name Lawson Oil and Gas Company

Pure Number 524

Latitude 43.67537

Longitude -84.32106

## THE PURE OIL COMPANY

DATE October 27, 1933

## LOCATION REPORT

No. **524**STATE MichiganCOUNTY MidlandMidlandDIST. LincolnTWP. LincolnSEC. 26TOWN 15 NRANGE 1 EWELL No. 1 (SERIAL No. 524) FARMPREC. T. W. Atkinson

ACRES

NAME OF STREAM OR WATERS

QUADRANGLE

NE 1/4 SW 1/4OPERATOR Lawson Oil & Gas Co.MAP Lincoln Township, Midland CountyLincoln Twp., Midland Co.

660' 660 Feet from North Line of Farm

330' 330 " " East " " "

" " South " " "

2310' 2310 " " West " " "

Feet from North Line of Section

" " East " " "

1980' 1980 " " South " " "

" " West " " "

## LEGEND

O LOCATION

① RIG

⊕ DRILLING

⊗ GAS WELL

● OIL WELL

⬮ SMALL OIL WELL

⬮ DRY HOLE

⬮ DRY SHOWING OIL

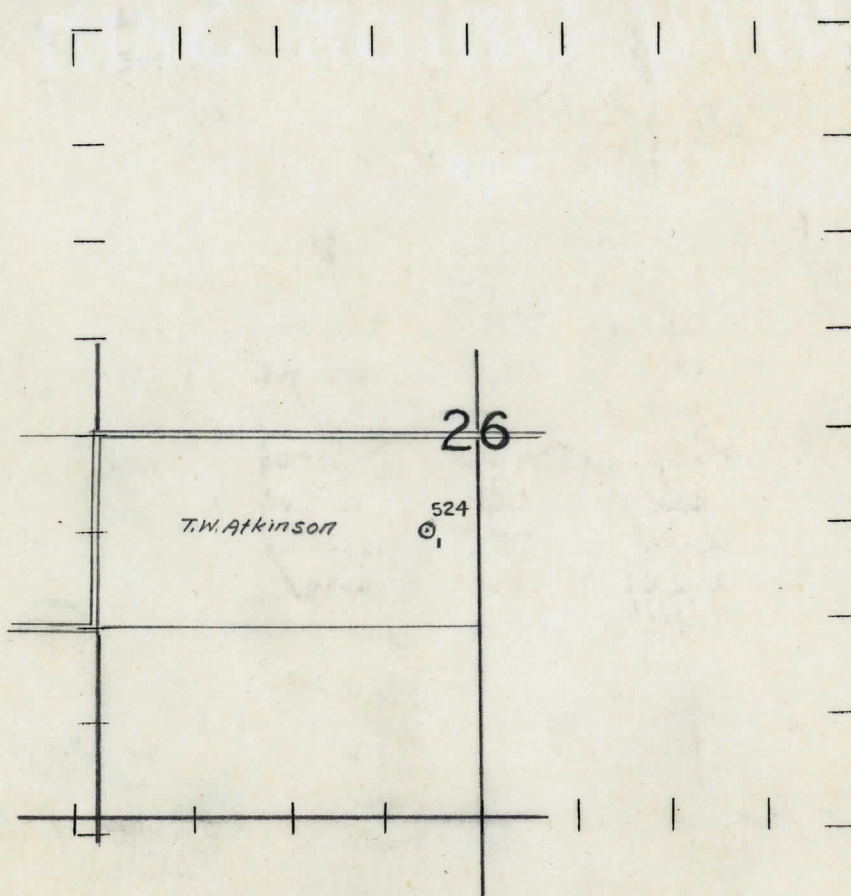
⬮ DRY SHOWING GAS

⬮ ABANDONED LOCATION

⬮ ABANDONED GAS WELL

⬮ ABANDONED OIL WELL

NOTE: Below make tracing from map, (when no map is obtainable make sketch) showing farm, center of section, this location with measurements and also wells, dry holes, or other locations in the vicinity of this location. Make copy to keep for reference and send original to Columbus office.



REMARKS:

SIGNED

Superintendent or Foreman.



THE PURE OIL COMPANY

No. 524

**SUPT. OR FOREMAN**