



Western Michigan University  
ScholarWorks at WMU

---

Legacy Scout Tickets from Pure Oil Company

---

8-20-2021

MGRRE\_PureOilScoutTickets\_Brennan, Charles J., et  
al\_1\_21111017850000

MGRRE  
*Western Michigan University*

Follow this and additional works at: <https://scholarworks.wmich.edu/pure>



Part of the Geology Commons

---

#### WMU ScholarWorks Citation

MGRRE, "MGRRE\_PureOilScoutTickets\_Brennan, Charles J., et al\_1\_21111017850000" (2021). *Legacy Scout Tickets from Pure Oil Company*. 5470.  
<https://scholarworks.wmich.edu/pure/5470>

This Document is brought to you for free and open access via ScholarWorks at WMU. It has been accepted for inclusion in Legacy Scout Tickets from Pure Oil Company by an authorized administrator of ScholarWorks at WMU. See the National Digital Catalogue - Science Base Catalogue for more collections submitted by MGRRE.



---

MGRRE\_PureOilScoutTickets\_Brennan, Charles J., et al\_1\_21111017850000

API 21111017850000

Permit Number 1785

Lease Name Brennan, Charles J., et al

Well Number 1

County Midland

Township 13N

Range 01W

Section 27

2021 DEQ or Pure co\_name Bradner, Vaugh Development Company, Incorporated

Pure Number 527

Latitude 43.48361

Longitude -84.4183

## THE PURE OIL COMPANY

DATE September 27, 1934

## LOCATION REPORT

No. 527STATE Michigan COUNTY Midland DIST. Porter TWP. Porter SEC. 27 TOWN 13N RANGE 1WWELL No. 1 (SERIAL No. 527) FARM J. Brennan ACRESNAME OF STREAM OR WATERS \_\_\_\_\_ QUADRANGLE NW-SW-SEOPERATOR Bradner-Vaughn Development Company Map Porter Township, Midland CountyBradner-Vaughn Dev. Co.Porter - Midland

Feet from North Line of Farm

990 990 " " East " " "990 990 " " South " " "

" " West " " "

Feet from North Line of Section

2310 2310 " " East " " "990 990 " " South " " "

" " West " " "

## LEGEND

○ LOCATION

① RIG

⊕ DRILLING

☼ GAS WELL

● OIL WELL

⬮ SMALL OIL WELL

⊙ DRY HOLE

⬮ DRY SHOWING OIL

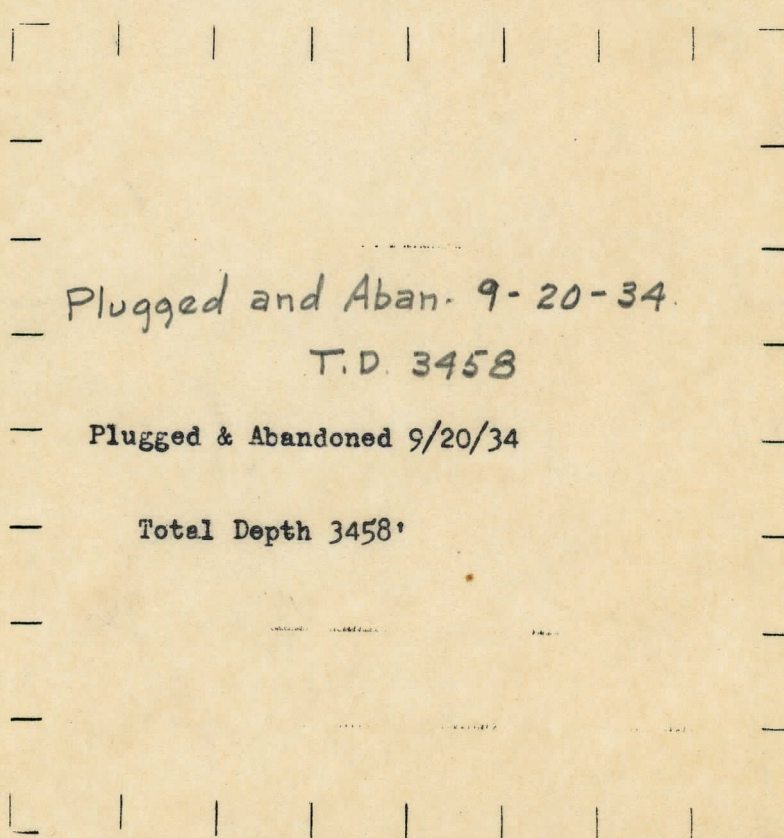
⊙ DRY SHOWING GAS

⊙ ABANDONED LOCATION

☼ ABANDONED GAS WELL

⬮ ABANDONED OIL WELL

NOTE: Below make tracing from map, (when no map is obtainable make sketch) showing farm, center of section, this location with measurements and also wells, dry holes, or other locations in the vicinity of this location.



REMARKS:

SIGNED

  
Superintendent or Foreman.

DATE September 30, 1934  
NOVEMBER 3, 1933

LOCATION REPORT

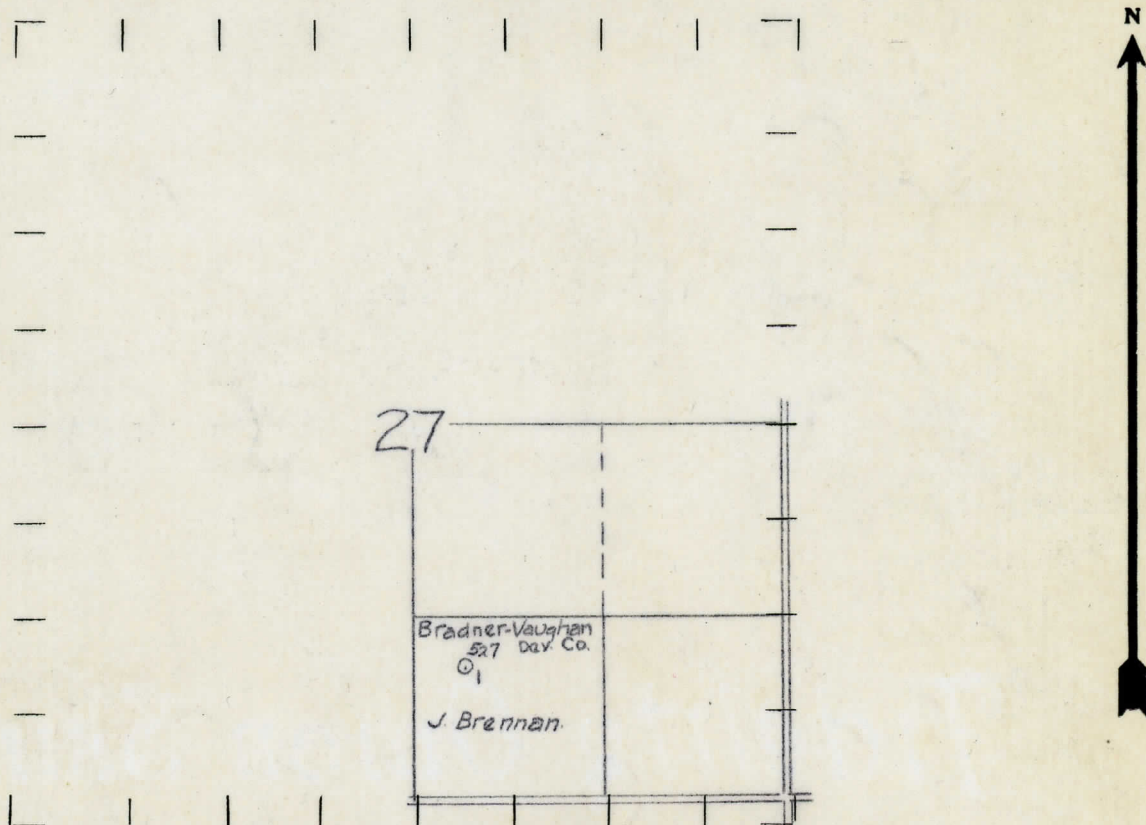
No. 527

STATE Michigan COUNTY Midland DIST. Porter SEC. 27 TOWN 13 N RANGE 1 W  
 WELL No. 1 (SERIAL No. 527) FARM Charles Brennan ACRES  
 NAME OF STREAM OR WATERS \_\_\_\_\_ QUADRANGLE NW-SW-SE  
 OPERATOR Bradner-Vaughn Dev. Co. MAP Porter Township, Midland County

Feet from North Line of Farm  
990 " " East " " "  
990 " " South " " "  
 " " West " " "  
 Feet from North Line of Section  
2310 " " East " " "  
990 " " South " " "  
 " " West " " "

- LEGEND**
- O LOCATION
  - ① RIG
  - ⊕ DRILLING
  - ⊗ GAS WELL
  - OIL WELL
  - ⊙ SMALL OIL WELL
  - ⊛ DRY HOLE
  - ⊕ DRY SHOWING OIL
  - ⊗ DRY SHOWING GAS
  - ⊙ ABANDONED LOCATION
  - ⊗ ABANDONED GAS WELL
  - ⊙ ABANDONED OIL WELL

NOTE: Below make tracing from map, (when no map is obtainable make sketch) showing farm, center of section, this location with measurements and also wells, dry holes, or other locations in the vicinity of this location. Make copy to keep for reference and send original to Columbus office.



REMARKS:  
 \_\_\_\_\_  
 \_\_\_\_\_  
 \_\_\_\_\_

SIGNED

*R. L. Yeager*  
 Superintendent or Foreman.

## No. 251

STATE Michigan COUNTY Midland DIST. Porter SEC. 27 TOWN 13N RANGE 1W  
TWP. Porter PREC. 27

NAME OF STREAM OR WATERS \_\_\_\_\_ QUADRANGLE NW-SW-SE

OPERATOR Bradner-Vaughn Development Company MAP Porter Township, Midland County

LOCATION REPORT SENT IN (DATE) 11/3/33

WELL STARTED (DATE) 12/14/33 WELL COMPLETED (DATE) 4/13/34

## OIL WELL.

ICASINVEDI

DRYHOLES

### ABANDONED WELL

CROSS OUT THREE OF THE ABOVE

Elevation 693.1'

## WELL RECORD

DATE OF SHOW acid 5/5/34 and 5/12/34 NUMBER OF QUARTS gallons 1000

1st 24 HOURS PRODUCTION 70 bbls. after acid BARRELS OR FEET

2nd " " "							"	"	"
-----------	--	--	--	--	--	--	---	---	---

[illegible]

3rd " " " " " "

4th " " " " " "

[illegible]

## SAND AND CASING

REMARKS Plugged back to 3454' - Show Gas in Traverse 2933-2937'.

6/26/34 Pumping approximately 25 bbls. per day with some salt water.

**SIGNED**

SUPT. OR FOREMAN