



Western Michigan University
ScholarWorks at WMU

Legacy Scout Tickets from Pure Oil Company

8-20-2021

**MGRRE_PureOilScoutTickets_Bank of Saginaw aka Second Nat'l
Bk of Saginaw_1_21111018220000**

MGRRE
Western Michigan University

Follow this and additional works at: <https://scholarworks.wmich.edu/pure>



Part of the Geology Commons

WMU ScholarWorks Citation

MGRRE, "MGRRE_PureOilScoutTickets_Bank of Saginaw aka Second Nat'l Bk of Saginaw_1_21111018220000" (2021). *Legacy Scout Tickets from Pure Oil Company*. 5480. <https://scholarworks.wmich.edu/pure/5480>

This Document is brought to you for free and open access via ScholarWorks at WMU. It has been accepted for inclusion in Legacy Scout Tickets from Pure Oil Company by an authorized administrator of ScholarWorks at WMU. See the National Digital Catalogue - Science Base Catalogue for more collections submitted by MGRRE.



**MGRRE_PureOilScoutTickets_Bank of Saginaw aka Second Nat'l Bk of
Saginaw_1_21111018220000**

API 21111018220000

Permit Number 1822

Lease Name Bank of Saginaw aka Second Nat'l Bk of Saginaw

Well Number 1

County Midland

Township 13N

Range 01W

Section 9

2021 DEQ or Pure co_name Trevor, Joseph

Pure Number 540

Latitude 43.53281

Longitude -84.44799

THE PURE OIL COMPANY

DATE March 16, 1934CORRECTED

LOCATION REPORT

CORRECTEDNo. 540STATE Michigan COUNTY Midland DIST. Porter SEC. 9 TOWN 13 N RANGE 1 WWELL No. 1 (SERIAL No. 540) FARM Second National Bank of Saginaw ACRESNAME OF STREAM OR WATERS QUADRANGLE SW-SW-NWOPERATOR Joseph Traver MAP Porter Township, Midland County2310 Feet from North Line of Farm

" " East " " "

" " South " " "

330 " " West " " "2310 Feet from North Line of Section

" " East " " "

" " South " " "

330 " " West " " "LEGEND

O LOCATION

① RIG

⊕ DRILLING

⊗ GAS WELL

● OIL WELL

⊙ SMALL OIL WELL

⊕ DRY HOLE

⊕ DRY SHOWING OIL

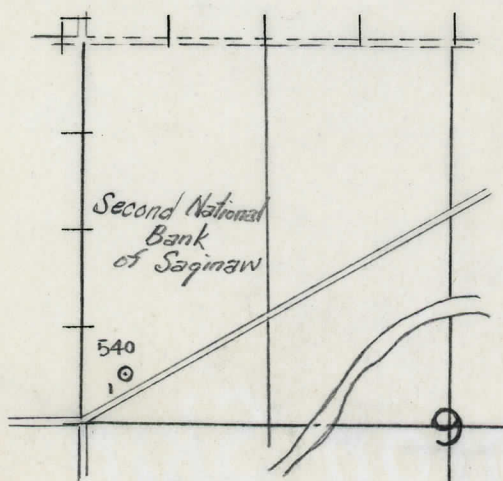
⊕ DRY SHOWING GAS

⊕ ABANDONED LOCATION

⊕ ABANDONED GAS WELL

⊕ ABANDONED OIL WELL

NOTE: Below make tracing from map, (when no map is obtainable make sketch) showing farm, center of section, this location with measurements and also wells, dry holes, or other locations in the vicinity of this location. Make copy to keep for reference and send original to Columbus office.



REMARKS:

Formerly carried as Bank of SaginawFormerly carried as Bank of Saginaw - Farm Name

SIGNED

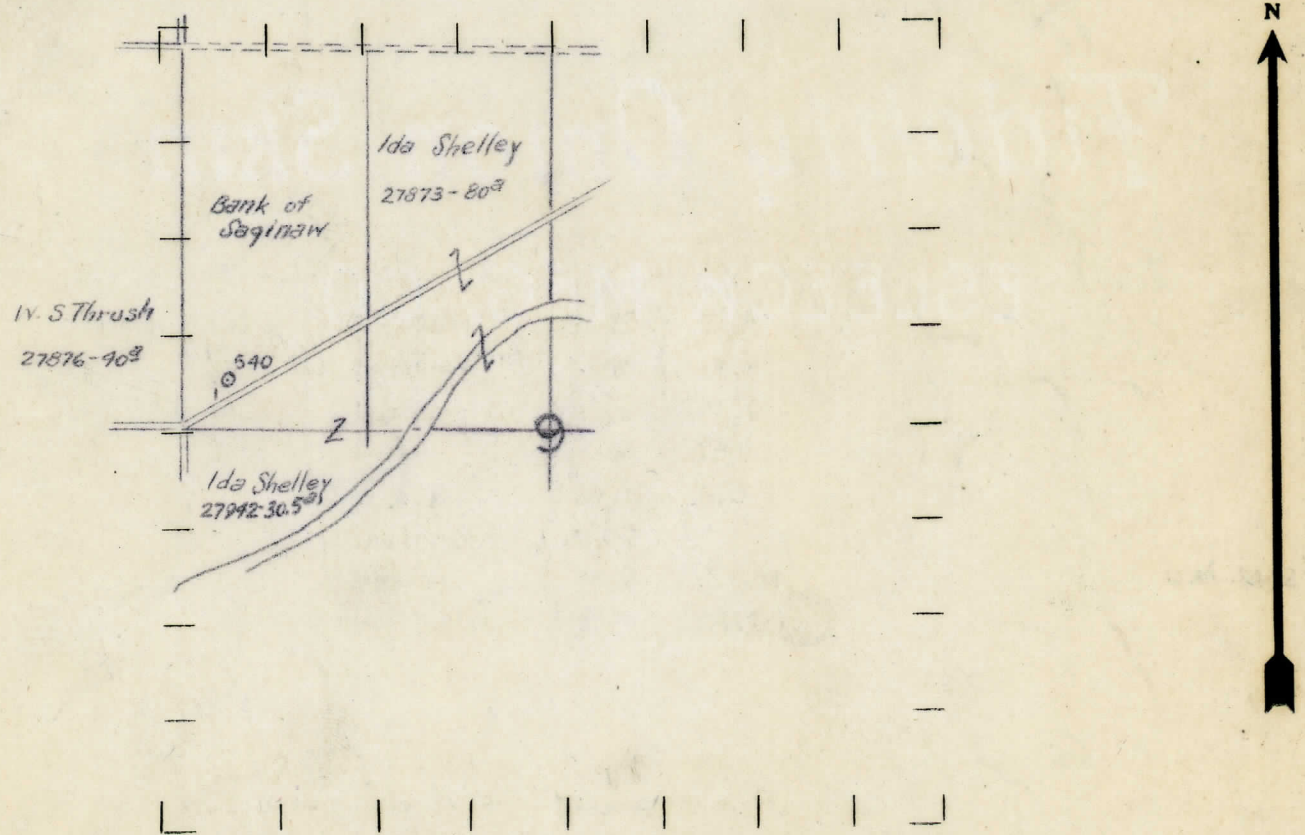
Superintendent or Foreman.

STATE Michigan COUNTY Midland DIST. Porter SEC. 9 TOWN 13 N RANGE 1W
WELL No. 1 (SERIAL No. 540) FARM Bank of Saginaw ACRES
NAME OF STREAM OR WATERS QUADRANGLE SW-SW-NW
OPERATOR Joseph Trever MAP Porter Township, Midland County

2310 Feet from North Line of Farm
" " East " " "
" " South " " "
330 " " West " " "
2310 Feet from North Line of Section
" " East " " "
" " South " " "
330 " " West " " "

- LEGEND
- | | |
|------------------|----------------------|
| ○ LOCATION | ✦ DRY HOLE |
| ① RIG | ✦ DRY SHOWING OIL |
| ⊗ DRILLING | ✦ DRY SHOWING GAS |
| ⊗ GAS WELL | ⊗ ABANDONED LOCATION |
| ● OIL WELL | ⊗ ABANDONED GAS WELL |
| ⬮ SMALL OIL WELL | ⬮ ABANDONED OIL WELL |

NOTE: Below make tracing from map, (when no map is obtainable make sketch) showing farm, center of section, this location with measurements and also wells, dry holes, or other locations in the vicinity of this location. Make copy to keep for reference and send original to Columbus office.



REMARKS:

SIGNED
Superintendent or Foreman.

No. 540

WELL No. 1 (SERIAL No. 540) FARM 2nd National Bank of Saginaw ACRES

NAME OF STREAM OR WATERS _____ QUADRANGLE **SW-SW-NW**

OPERATOR Joseph Trevor MAP Porter Township, Midland County

LOCATION REPORT SENT IN (DATE) 12/1/33

WELL STARTED (DATE) 6/26/34 WELL COMPLETED (DATE) 9/24/34

ABANDONED WELL

Elevation 676.6'

CROSS OUT THREE OF THE ABOVE

WELL RECORD

DATE OF SHOT _____ NUMBER OF QUARTS _____

1st 24 HOURS PRODUCTION Dry Hole _____ BARRELS OR FEET

2nd	"	"	"
-----	---	---	---

[illegible][illegible]

5th " " " " " "

SAND AND CASING

REMARKS	Salt Water 3448-3452' - Filled up 400'.
---------	---

NOTE:—MAKE COPY TO KEEP FOR REFERENCE AND SEND ORIGINAL TO CHICAGO OFFICE. LIST MATERIAL CHARGEABLE TO WELL ON OTHER SIDE.

SIGNED

24 Bull

SUPT. OR FOREMAN